

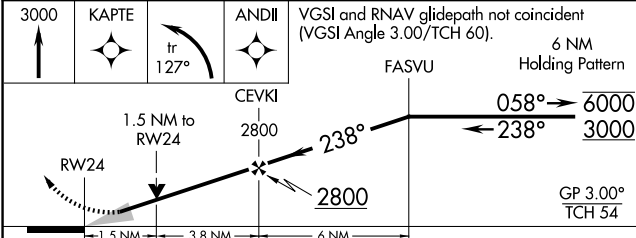
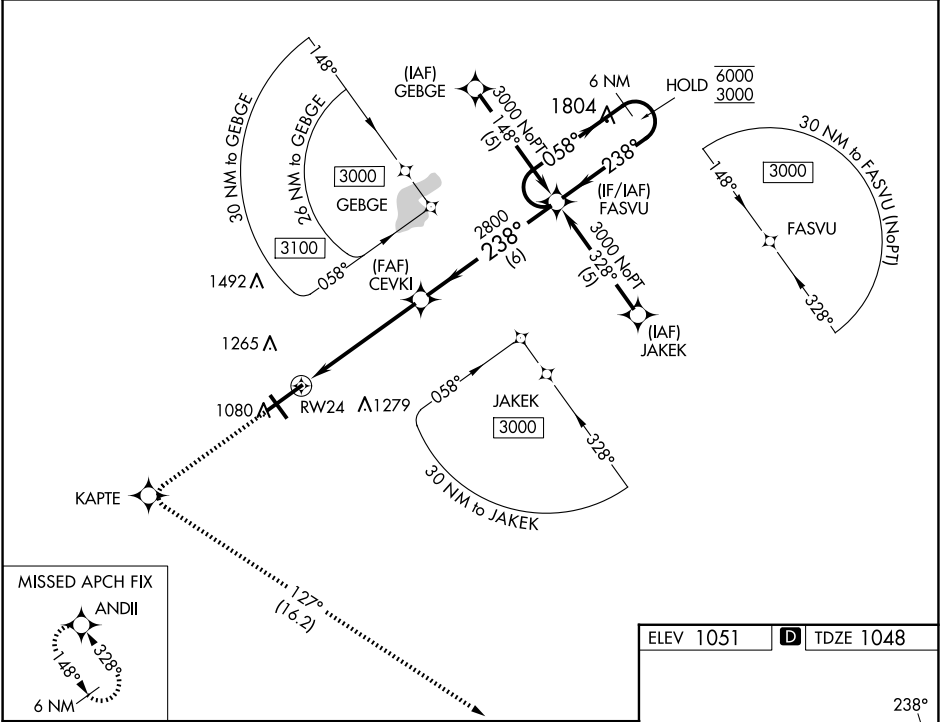
WAAS CH <b>97615</b> <b>W24A</b>	APP CRS <b>238°</b>	Rwy Idg TDZE Apt Elev	<b>9009</b> <b>1048</b> <b>1051</b>
--	------------------------	-----------------------------	---

# RNAV (GPS) RWY 24

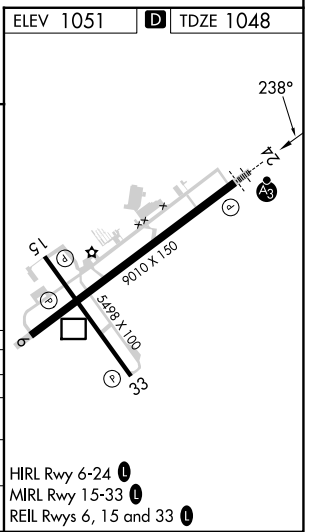
SPRINGFIELD/BECKLEY MUNI (SGH)

RNP APCH - GPS.	SSALR	MISSED APPROACH: Climb to 3000 direct KAPTE and left turn on track 127° to ANDII and hold.
<p>▼ For uncompensated Baro-VNAV systems, LNAV/VNAV NA below -17°C or above 54°C.</p> <p>▲ For inop ALS, increase LNAV/VNAV all Cats visibility to 1 SM.</p>		

AWOS-3PT <b>134.975</b>	COLUMBUS APP CON <b>118.85 269.275</b>	UNICOM <b>122.95 (CTAF) 1</b>
----------------------------	---	----------------------------------



CATEGORY	A	B	C	D
LPV DA		1248-½	200 (200-½)	
LNAV/VNAV DA		1398-⅝	350 (400-⅝)	
LNAV MDA	1580-½	532 (600-½)	1580-1	532 (600-1)
CIRCLING	1580-1	529 (600-1)	1580-1½	1620-2
			529 (600-1½)	569 (600-2)



EC-2, 15 MAY 2025 to 12 JUN 2025

EC-2, 15 MAY 2025 to 12 JUN 2025