

WAAS CH 58115 W06A	APP CRS 058°	Rwy ldg TDZE Apt Elev	9009 1051 1051
----------------------------------------	------------------------	-----------------------------	-------------------------------------------

RNAV (GPS) RWY 6

SPRINGFIELD/BECKLEY MUNI (SGH)

RNP APCH - GPS

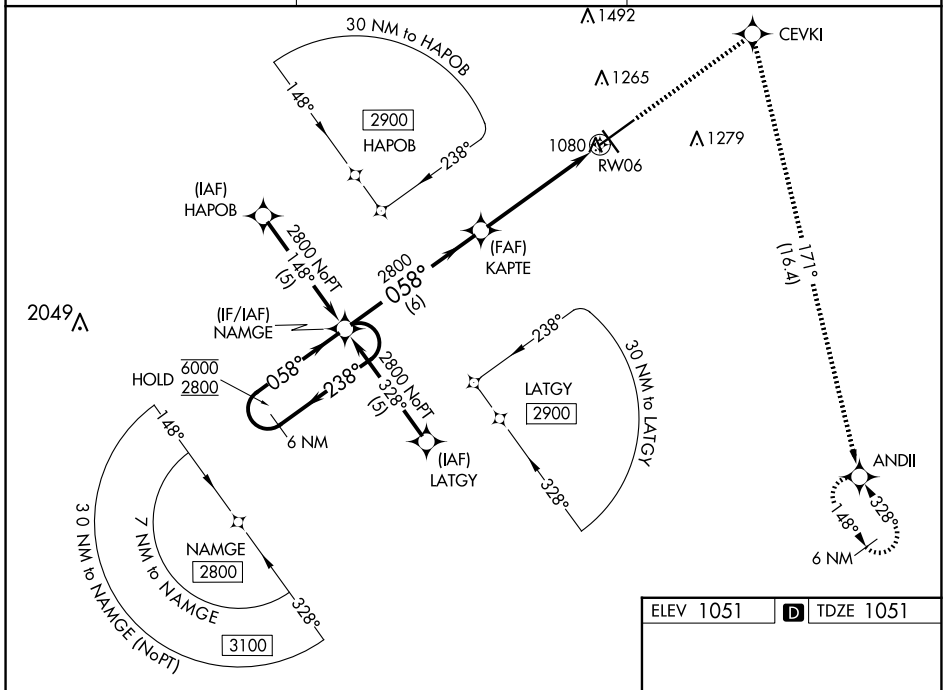
⚠ Rwy 6 helicopter visibility reduction below 3/4 SM NA.
For uncompensated Baro-VNAV systems, LNAV/VNAV NA below -17°C or above 54°C

MISSED APPROACH: Climb to 3000
direct CEVKI and right turn on track 171°
to ANDII and hold.

AWOS-3PT
134.975

COLUMBUS APP CON
118.85 269.275

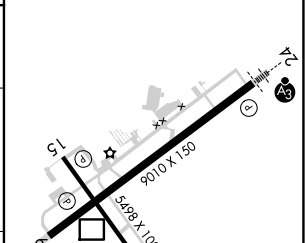
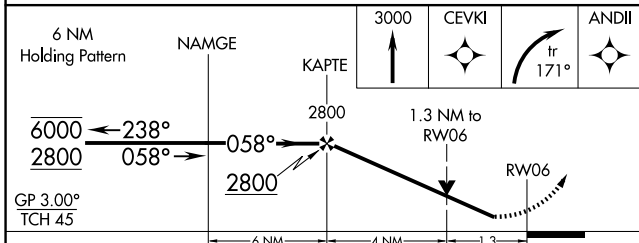
UNICOM
122.95 (CTAF) ①



EC-2, 15 MAY 2025 to 12 JUN 2025

EC-2, 15 MAY 2025 to 12 JUN 2025

ELEV 1051 **D** TDZE 1051



CATEGORY	A	B	C	D
LPV DA		1354-7/8	303 (400-7/8)	
LNAV/VNAV DA		1429-1	378 (400-1)	
LNAV MDA	1500-1	449 (500-1)	1500-1 3/8	449 (500-1 3/8)
C CIRCLING	1500-1 449 (500-1)	1580-1 529 (600-1)	1580-1 1/2 529 (600-1 1/2)	1620-2 569 (600-2)

HIRL Rwy 6-24 ①
MIRL Rwy 15-33 ①
REIL Rws 6, 15 and 33 ①