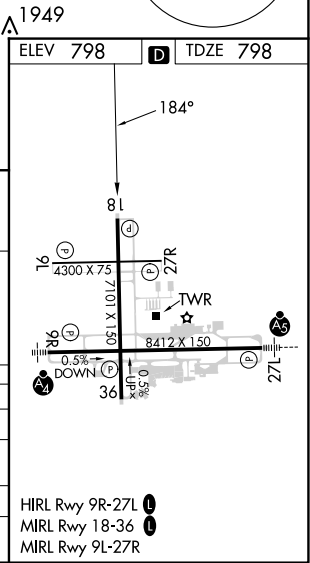
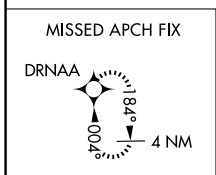
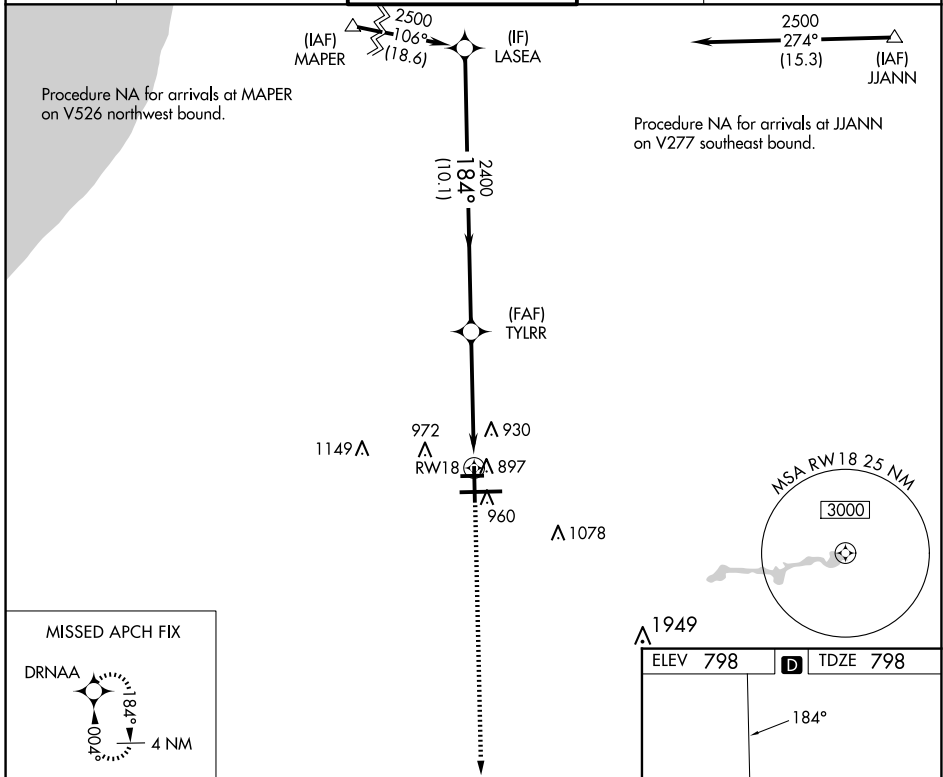


WAAS CH 73021 W18A	APP CRS 184°	Rwy Idg TDZE Apt Elev	7101 798 798
--	------------------------	-----------------------------	---

RNAV (GPS) RWY 18

SOUTH BEND INTL (SBN)

RNP APCH - GPS.		MISSED APPROACH: Climb to 2400 direct DRNAA and hold.		
Circling to Rwy 27R NA at night. For uncompensated Baro-VNAV systems, LNAV/VNAV NA below -19°C or above 54°C.				
ATIS 120.675	SOUTH BEND APP CON * 118.55 257.8	SOUTH BEND TOWER * 135.675 (CTAF) 0 257.8	GND CON 121.7	CLNC DEL 121.9



EC-2, 15 MAY 2025 to 12 JUN 2025

EC-2, 15 MAY 2025 to 12 JUN 2025