

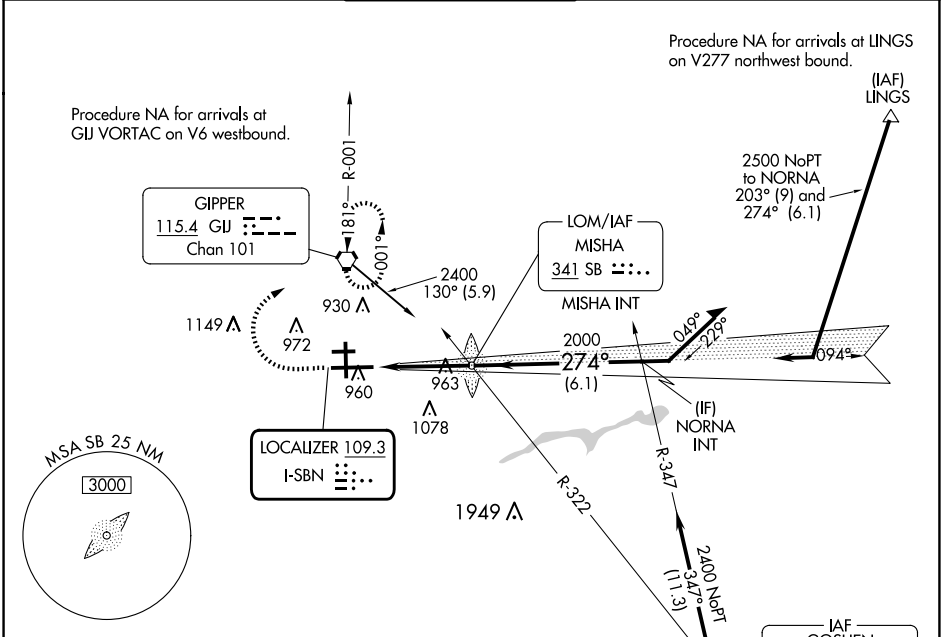
LOC I-SBN <b>109.3</b>	APP CRS <b>274°</b>	Rwy Idg TDZE Apt Elev	<b>8412</b> <b>774</b> <b>798</b>
---------------------------	------------------------	-----------------------------	---

# ILS or LOC RWY 27L

SOUTH BEND INTL (SBN)

<p><b>▼</b> Circling Rwy 27R NA at night.  <b>▲</b> * RVR 1800 authorized with the use of FD or AP or HUD to DA.</p>	<p>MALSR  </p>	<p>MISSED APPROACH: Climb to 1200 then climbing right turn to 2400 direct GIJ VORTAC and hold.</p>
--	--------------------	--

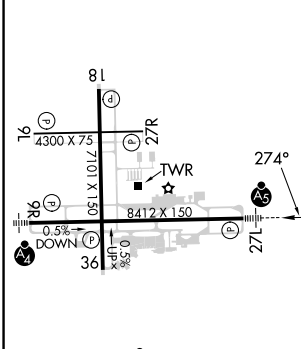
ATIS <b>120.675</b>	SOUTH BEND APP CON * <b>118.55 257.8</b>	SOUTH BEND TOWER * <b>135.675 (CTAF) 257.8</b>	GND CON <b>121.7</b>	CLNC DEL <b>121.9</b>
------------------------	---	---	-------------------------	--------------------------



EC-2, 15 MAY 2025 to 12 JUN 2025

EC-2, 15 MAY 2025 to 12 JUN 2025

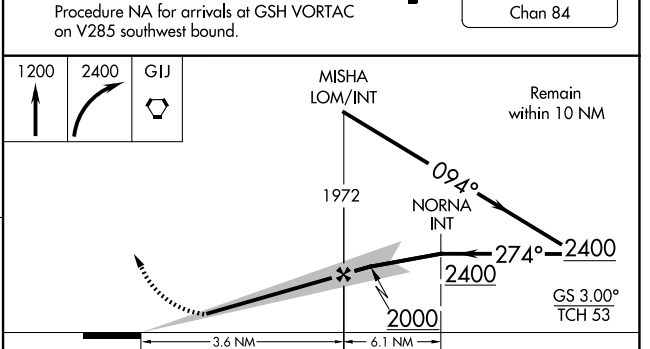
ELEV 798	<b>D</b>	TDZE 774
----------	----------	----------



HIRL Rwy 9R-27L  
MIRL Rwy 18-36  
MIRL Rwy 9L-27R

FAF to MAP 3.6 NM

Knots	60	90	120	150	180
Min:Sec	3:36	2:24	1:48	1:26	1:12



CATEGORY	A	B	C	D
S-ILS 27L *	974/24 200 (200-½)			
S-LOC 27L	1220/24	446 (500-½)	1220/45	446 (500-¾)
<b>C</b> CIRCLING	1280-1	482 (500-1)	1440-1¾ 642 (700-1¾)	1500-2¼ 702 (800-2¼)