

APP CRS 333°	Rwy ldg TDZE Apt Elev	3456 859 859
------------------------	-----------------------------	---

RNAV (GPS) RWY 33

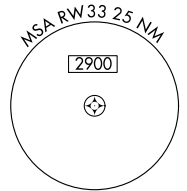
MARION MUNI - MCKINNEY FLD (MZZZ)

RNP APCH - GPS.

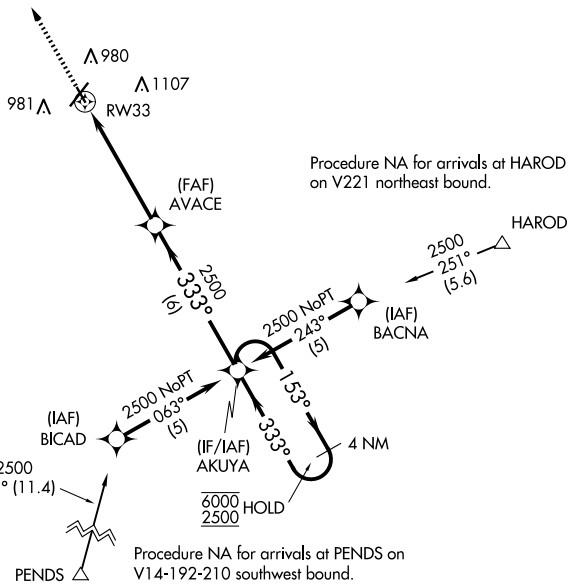
⚠ Rwy 33 helicopter visibility reduction below 3/4 SM NA. Circling Rwy 15 NA at night.

MISSED APPROACH: Climb to 2500 direct AGACI and hold.

AWOS-3 108.6	GRISSOM APP CON ★ 121.05 338.275	CLNC DEL 120.0	UNICOM 122.7 (CTAF) 0
------------------------	--	--------------------------	---------------------------------



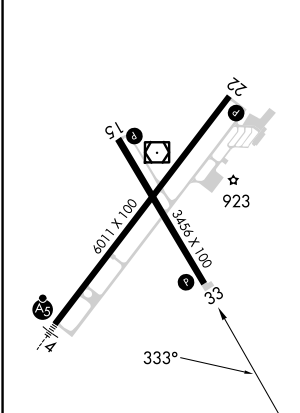
1649 A



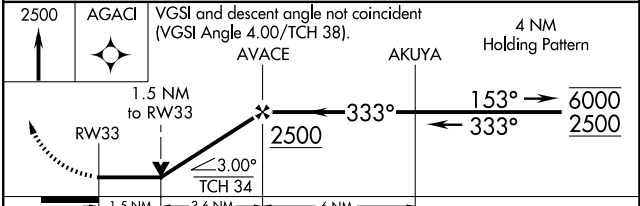
Procedure NA for arrivals at HAROD on V221 northeast bound.

Procedure NA for arrivals at PENDS on V14-192-210 southwest bound.

ELEV 859	TDZE 859
----------	----------



- HIRL Rwy 4-22
- MIRL Rwy 15-33
- REIL Rwy 15, 22, and 33



CATEGORY	A	B	C	D
LNAV MDA	1340-1	481 (500-1)	1340-1 3/8	481 (500-1 3/8)
C CIRCLING	1340-1	481 (500-1)	1420-1 1/2 561 (600-1 1/2)	1500-2 641 (700-2)

EC-2, 15 MAY 2025 to 12 JUN 2025

EC-2, 15 MAY 2025 to 12 JUN 2025