


WAAS CH <b>56310</b> <b>W25A</b>	APP CRS <b>252°</b>	Rwy Idg TDZE <b>860</b> Apt Elev <b>862</b>	<b>6005</b>
--	------------------------	---	-------------

# RNAV (GPS) RWY 25

INDIANAPOLIS RGNL (MQJ)

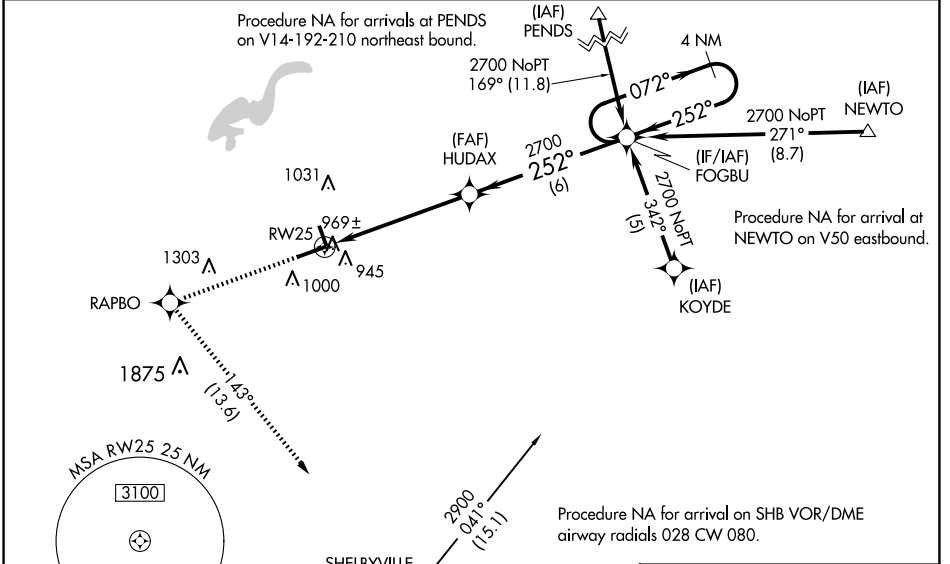
**⚠** For uncompensated Baro-VNAV systems, LNAV/VNAV NA below -16°C (4°F) or above 54°C (130°F). Baro-VNAV and VDP NA when using Indianapolis Intl altimeter setting. DME/DME RNP-0.3 NA. When local altimeter setting not received, use Indianapolis Intl altimeter setting and increase all DA 55 feet and all MDA 60 feet, and increase all visibilities 1/2 SM. When using Indianapolis altimeter setting inoperative table does not apply. For inoperative ALS, increase LPV all Cats visibility to 1 SM.

**MALS**

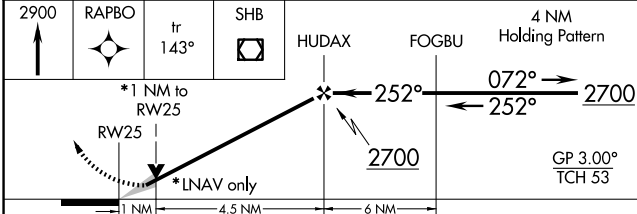


**MISSED APPROACH:**  
Climb to 2900 direct RAPBO and on track 143° to SHB VOR/DME and hold.

AWOS-3PT <b>124.175</b>	INDIANAPOLIS APP CON <b>127.15 317.8</b>	CLNC DEL <b>119.25</b>	UNICOM <b>122.975</b> (CTAF) <b>📻</b>
----------------------------	---	---------------------------	--



2900	RAPBO	ir 143°	SHB	HUDAX	FOGBU	4 NM Holding Pattern
------	-------	---------	-----	-------	-------	----------------------



CATEGORY	A	B	C	D
LPV DA		1160-1/2	300 (300-1/2)	
LNAV/VNAV DA		1259-7/8	399 (400-7/8)	
LNAV MDA	1220-1/2	360 (400-1/2)	1220-5/8	360 (400-5/8)
<b>C</b> CIRCLING	1340-1	478 (500-1)	1360-1 1/2 498 (500-1 1/2)	1660-2 1/2 798 (800-2 1/2)

ELEV 862	TDZE 860
----------	----------

REIL Rwy 7 and 34  
HIRL Rwy 7-25 **📻**  
MIRL Rwy 16-34

EC-2, 15 MAY 2025 to 12 JUN 2025

EC-2, 15 MAY 2025 to 12 JUN 2025