


LOC I-JNK <b>109.1</b>	APP CRS <b>319°</b>	Rwy Idg <b>6500</b>
		TDZE <b>937</b>
		Apt Elev <b>937</b>

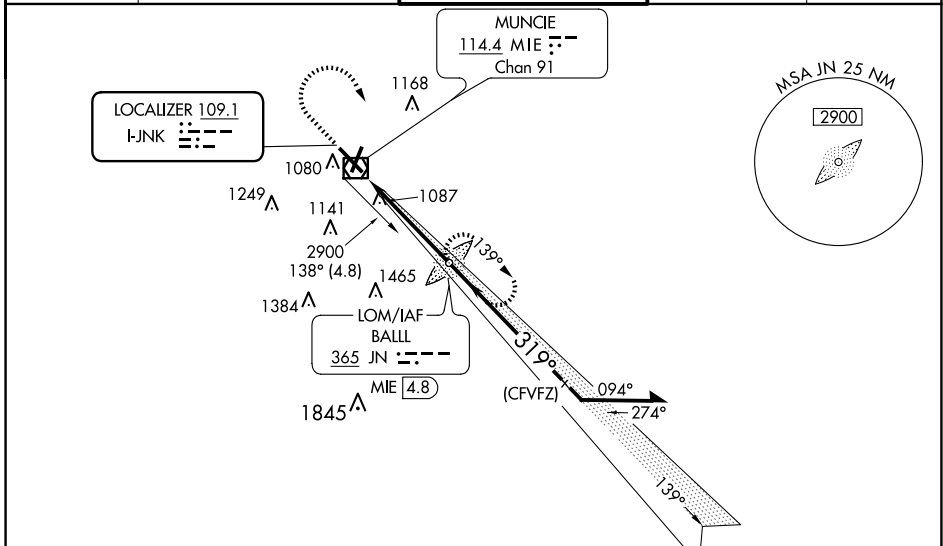
# ILS or LOC RWY 32

DELAWARE COUNTY RGNL (MIE)

**⚠** When control tower closed, except for operations with approved weather reporting use Fort Wayne altimeter setting. For inop MALS/RSR when using Fort Wayne altimeter setting minimums, increase S-ILS 32 visibility to 1 SM. When local altimeter setting not received, use Fort Wayne altimeter setting: increase DA to 1257 feet and visibility all Cats 1/4 SM; increase all MDAs 120 feet and visibility Cat C 5/8 SM, Cat D 1 1/8 SM. VDP NA when using Fort Wayne altimeter setting.

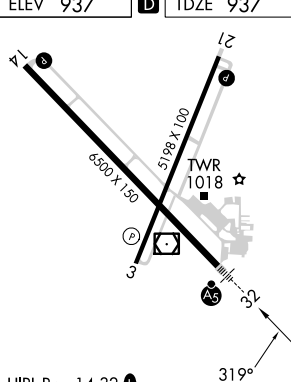
**MALS/RSR**  
  
**MISSED APPROACH:** Climb to 1460 then climbing right turn to 2900 direct BALL LOM and hold.

ATIS <b>133.25</b>	INDIANAPOLIS APP CON <b>120.65 317.8</b>	MUNCIE TOWER ★ <b>120.1 (CTAF) 0</b>	GND CON <b>121.9</b>	UNICOM <b>122.95</b>
-----------------------	---	---	-------------------------	-------------------------



**ADF or DME REQUIRED**

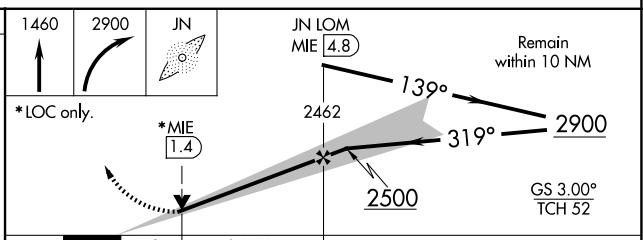
ELEV 937	<b>D</b>	TDZE 937
----------	----------	----------



HIRL Rwy 14-32 **0**  
 MIRL Rwy 3-21 **0**  
 REIL Rwys 3, 14 and 21 **0**

FAF to MAP 4.6 NM

Knots	60	90	120	150	180
Min:Sec	4:36	3:04	2:18	1:50	1:32



CATEGORY	A	B	C	D
S-ILS 32	1137-1/2 200 (200-1/2)			
S-LOC 32	1380-1/2	443 (500-1/2)	1380-7/8	443 (500-7/8)
<b>C</b> CIRCLING	1460-1	523 (600-1)	1500-1 1/2 563 (600-1 1/2)	1600-2 663 (700-2)
FORT WAYNE ALTIMETER SETTING MINIMUMS				
S-ILS 32	1257-5/8 320 (400-5/8)			
S-LOC 32	1520-1/2	583 (600-1/2)	1520-1 1/2 583 (600-1 1/2)	1520-2 1/2 583 (600-2 1/2)
<b>C</b> CIRCLING	1580-1	643 (700-1)	1600-1 3/4 663 (700-1 3/4)	1720-2 1/2 783 (800-2 1/2)

EC-2, 15 MAY 2025 to 12 JUN 2025

EC-2, 15 MAY 2025 to 12 JUN 2025