

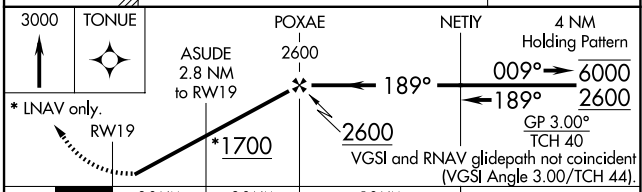
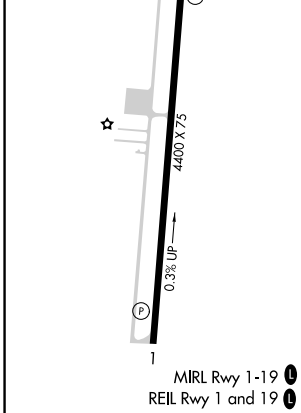
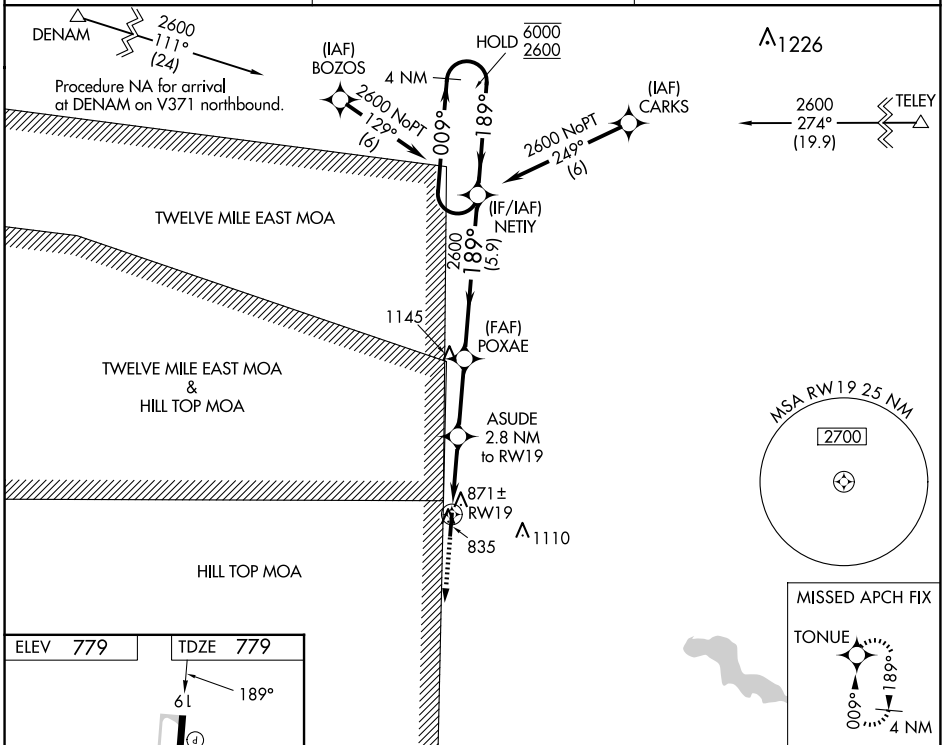
WAAS CH 50438 W19A	APP CRS 189°	Rwy ldg 4400
	TDZE 779	
	Apt Elev 779	

RNAV (GPS) RWY 19

PERU MUNI (I76)

RNP APCH.	MISSED APPROACH: Climb to 3000 direct TONUE and hold.
<p>▼ Rwy 19 Helicopter visibility reduction below 3/4 SM NA. Baro-VNAV NA. Use Grissom ARB altimeter setting; when not received use Logansport altimeter setting and increase all DAs 8 feet.</p> <p>▲ NA</p>	

KGUS ATIS 132.55 270.8	GRISSOM APP CON ★ 121.05 338.275	UNICOM 122.8 (CTAF) 0
----------------------------------	--	---------------------------------



CATEGORY	A	B	C	D
LPV DA		1053-1	274 (300-1)	
LNAV/VNAV DA		1074-1	295 (300-1)	
LNAV MDA	1160-1	381 (400-1)	1160-1½	381 (400-1½)
☑ CIRCLING	1280-1	501 (600-1)	1500-2 721 (800-2)	1500-2¼ 721 (800-2¼)

EC-2, 15 MAY 2025 to 12 JUN 2025

EC-2, 15 MAY 2025 to 12 JUN 2025