

PIQUA, OHIO

AL-5022 (FAA)

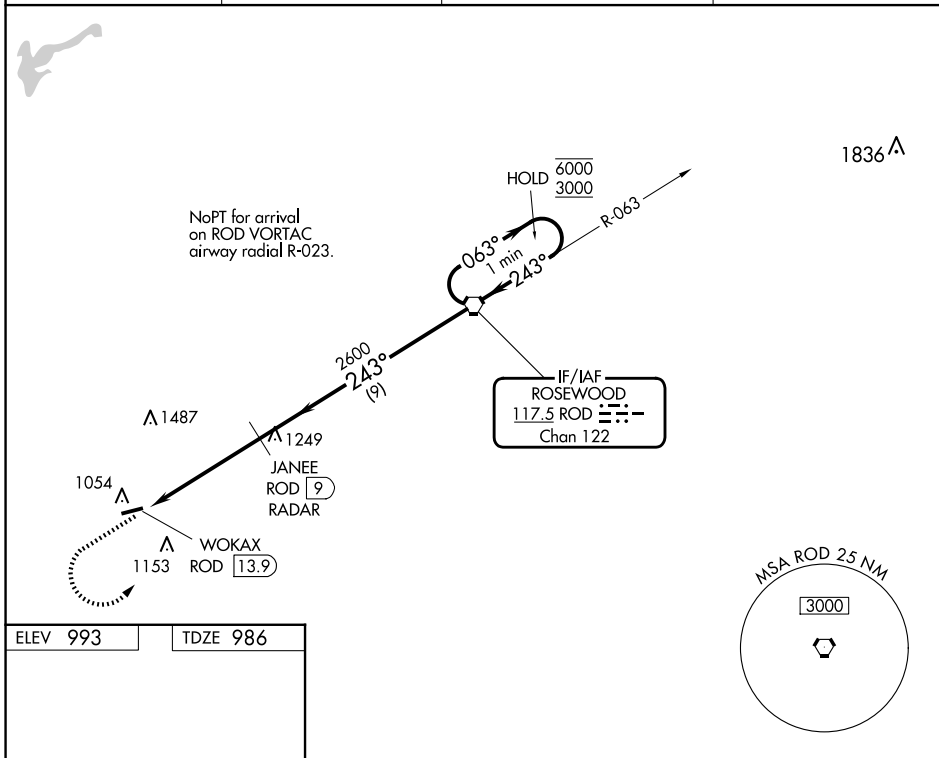
25051

VORTAC ROD 117.5 Chan 122	APP CRS 243°	Rwy Idg 3998 TDZE 986 Apt Elev 993
---	------------------------	---

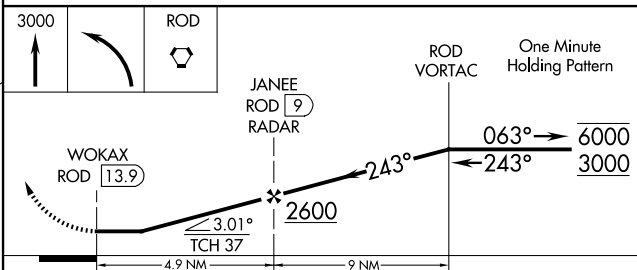
VOR RWY 26

PIQUA/HARTZELL FLD (I17)

DME or RADAR required.		MISSED APPROACH: Climb to 3000 then left turn direct ROD VORTAC and hold.	
<p>▼ Rwy 26 helicopter visibility reduction below 3/4 SM NA. ▲ NA Use James M Cox Dayton Intl altimeter setting.</p>		DAY ASOS 125.8	VES AWOS-3PT 125.9
		COLUMBUS APP CON 134.45 294.5 352.05	UNICOM 123.0 (CTAF) 0



ELEV 993	TDZE 986
FAF to MAP 4.9 NM	
Knots	60 90 120 150 180
Min:Sec	4:54 3:16 2:27 1:58 1:38



CATEGORY	A	B	C	D
S-26	1500-1	514 (600-1)	1500-1 3/8	514 (600-1 3/8)
<input checked="" type="checkbox"/> CIRCLING	1500-1 507 (600-1)	1560-1 567 (600-1)	1560-1 1/2 567 (600-1 1/2)	1880-3 887 (900-3)

PIQUA, OHIO
Amdt 6E 20JUN19

40°10'N-84°19'W

PIQUA/HARTZELL FLD (I17)
VOR RWY 26

EC-2, 07 AUG 2025 to 04 SEP 2025

EC-2, 07 AUG 2025 to 04 SEP 2025