

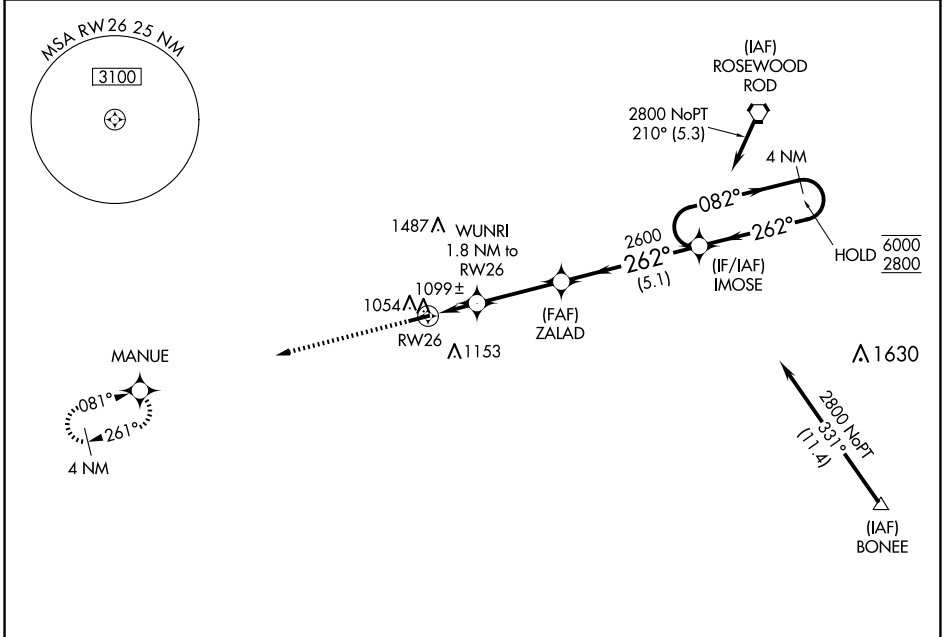
WAAS CH <b>86745</b> <b>W26A</b>	APP CRS <b>262°</b>	Rwy Idg TDZE <b>986</b> Apt Elev <b>993</b>	<b>3998</b>
--	------------------------	---	-------------

# RNAV (GPS) RWY 26

PIQUA/HARTZELL FLD (I17)

RNP APCH - GPS.	MISSED APPROACH: Climb to 2700 direct MANUE and hold.
<b>NA</b> Baro-VNAV NA. Use Versailles altimeter setting.	

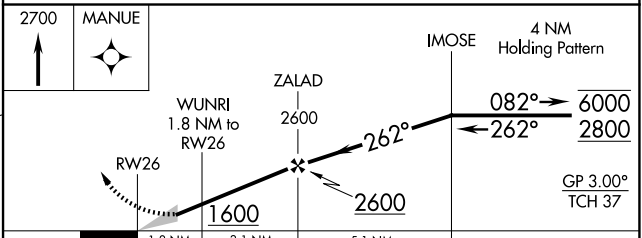
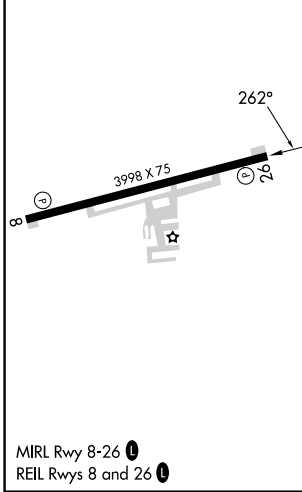
DAY ASOS <b>125.8</b>	VES AWOS-3PT <b>125.9</b>	COLUMBUS APP CON <b>134.45 294.5 352.05</b>	UNICOM <b>123.0</b> (CTAF) <b>0</b>
--------------------------	------------------------------	--	--



EC-2, 07 AUG 2025 to 04 SEP 2025

EC-2, 07 AUG 2025 to 04 SEP 2025

ELEV <b>993</b>	TDZE <b>986</b>
-----------------	-----------------



CATEGORY	A	B	C	D
LPV DA	1213-1	227 (300-1)		NA
LNAV/VNAV DA	1296-1	310 (400-1)		NA
LNAV MDA	1380-1	394 (400-1)	1380-1½ 394 (400-1½)	NA
<b>C</b> CIRCLING	1440-1 447 (500-1)	1540-1 547 (600-1)	1560-1½ 567 (600-1½)	NA