

VORTAC TTH 115.3 Chan 100	APP CRS 048°	Rwy Idg TDZE Apt Elev	9020 578 589
---	------------------------	-----------------------------	---

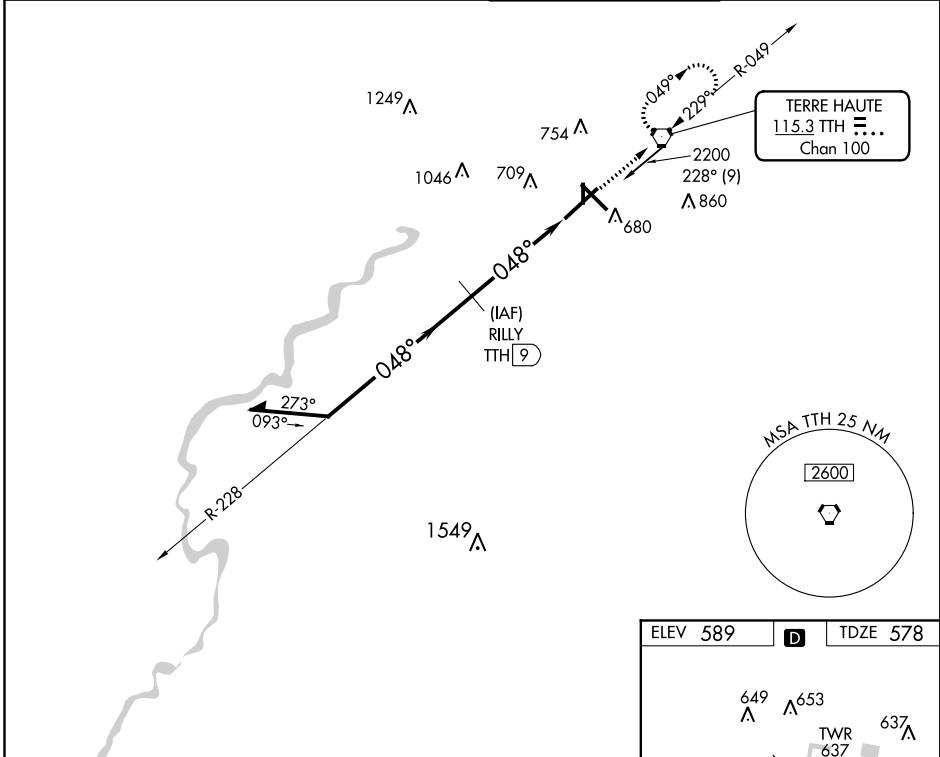
VOR/DME RWY 5

TERRE HAUTE INTL-HULMAN FIELD (HUF)

▼ For inoperative MALSR, increase S-5 Cat D visibility to RVR 6000. When local altimeter setting not received, use Paris, IL altimeter setting and increase all MDA ASR 80 feet and increase S-5 Cat C visibility ¼ mile. Circling Rws 14 and 36 NA at night. When VGSI inop, Circling Rwy 18 NA at night.

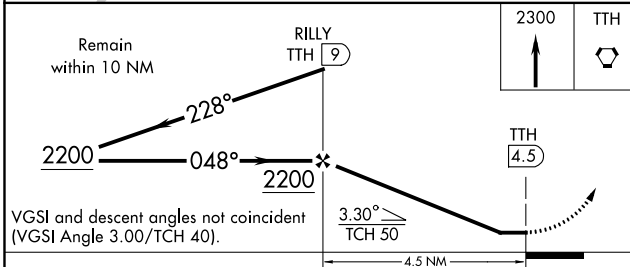
MALSR
MISSED APPROACH: Climb to 2300 direct TTH VORTAC and hold.

ATIS 127.5 269.375	HULMAN APP CON 125.45 339.8	HULMAN TOWER 134.725 239.0	GND CON 121.6 348.6
------------------------------	---------------------------------------	--------------------------------------	-------------------------------

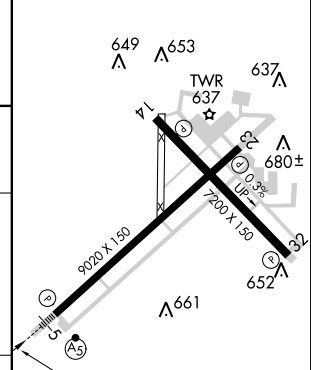


EC-2, 04 JAN 2018 to 01 FEB 2018

EC-2, 04 JAN 2018 to 01 FEB 2018



ELEV 589	D	TDZE 578
----------	----------	----------



CATEGORY	A	B	C	D
S-5	940/24 362 (400-½)			940/50 362 (400-1)
CIRCLING	1020-1 431 (500-1)	1040-1 451 (500-1)	1040-1½ 451 (500-1½)	1140-2 551 (600-2)

048° 4.5 NM from FAF
MIRL Rwy 18-36
REIL Rws 14, 23 and 32
HIRL Rws 5-23 and 14-32