

APP CRS 317°	Rwy Idg 7200
	TDZE 589
	Apt Elev 589

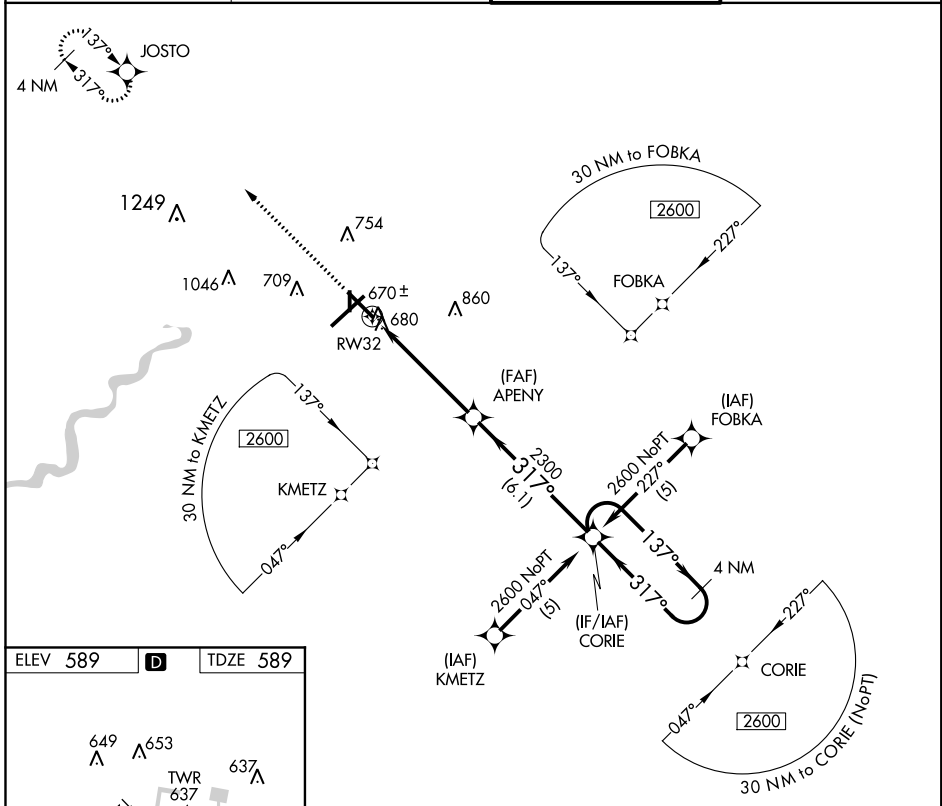
RNAV (GPS) RWY 32

TERRE HAUTE INTL-HULMAN FIELD (HUF)

ASR When local altimeter setting not received, use Paris, IL altimeter setting and increase all MDA 80 feet and increase LNAV Cats. C/D visibilities ¼ mile. DME/DME RNP-0.3 NA. Circling RWys 14 and 36 NA at night. When VGSI inoperative, Circling Rwy 18 NA at night.

MISSED APPROACH: Climb to 2600 direct JOSTO and hold.

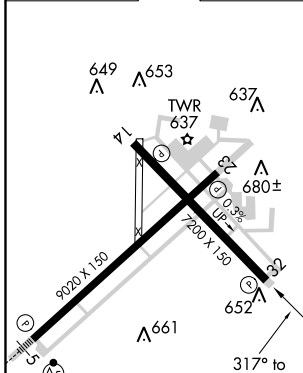
ATIS 127.5 269.375	HULMAN APP CON 125.45 339.8	HULMAN TOWER 134.725 239.0	GND CON 121.6 348.6
------------------------------	---------------------------------------	--------------------------------------	-------------------------------



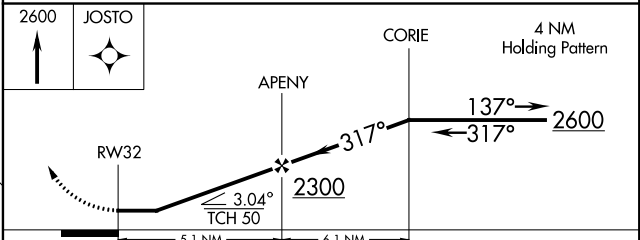
EC-2, 04 JAN 2018 to 01 FEB 2018

EC-2, 04 JAN 2018 to 01 FEB 2018

ELEV 589	D	TDZE 589
----------	----------	----------



MIRL Rwy 18-36
REIL Rws 14, 23 and 32
HIRL Rws 5-23 and 14-32



CATEGORY	A	B	C	D
LNAV MDA	940-1	351 (400-1)		940-1½ 351 (400-1½)
CIRCLING	1020-1 431 (500-1)	1040-1 451 (500-1)	1040-1½ 451 (500-1½)	1140-2 551 (600-2)