

WAAS CH <b>72625</b> <b>W23A</b>	APP CRS <b>229°</b>	Rwy Idg TDZE Apt Elev	<b>9020</b> <b>582</b> <b>589</b>
--	------------------------	-----------------------------	---

# RNAV (GPS) RWY 23

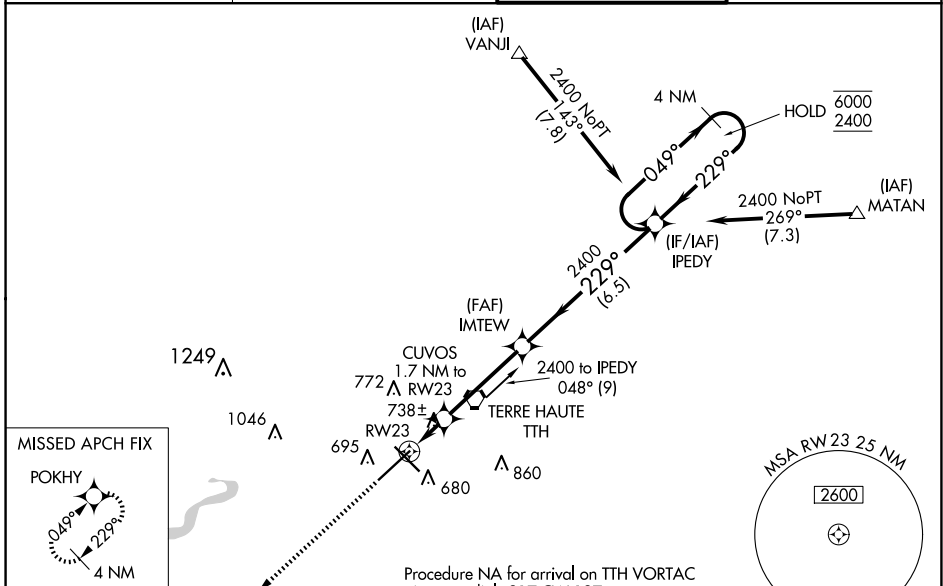
TERRE HAUTE RGNL (HUF)

RNP APCH.

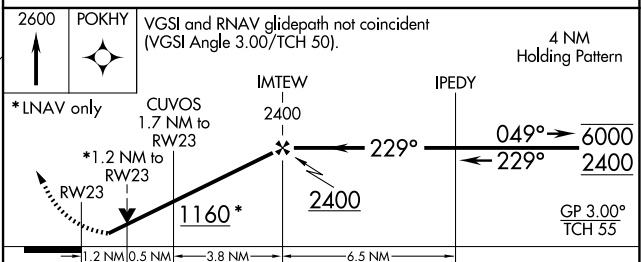
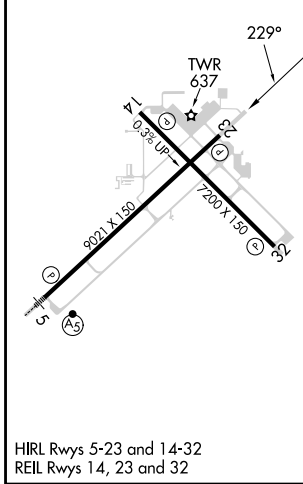
**ASR** Baro-VNAV and VDP NA when using Paris altimeter setting. Rwy 23 helicopter visibility reduction below 3/4 SM NA. For uncompensated Baro-VNAV systems, LNAV/VNAV NA below -16°C or above 54°C. When local altimeter setting not received, use Paris altimeter setting and increase all DA 61 feet and all MDA 80 feet, increase LPV and LNAV/VNAV visibility all Cats 1/8 SM, increase LNAV and Circling Cats C/D visibilities 1/4 SM.

MISSED APPROACH: Climb to 2600 direct POKHY and hold.

ATIS <b>127.5 269.375</b>	HULMAN APP CON <b>125.45 339.8</b>	HULMAN TOWER <b>134.725 322.475</b>	GND CON <b>121.6 348.6</b>
------------------------------	---------------------------------------	--	-------------------------------



ELEV 589	<b>D</b>	TDZE 582
----------	----------	----------



CATEGORY	A	B	C	D
LPV DA		890-7/8	308 (400-7/8)	
LNAV/VNAV DA		874-7/8	292 (300-7/8)	
LNAV MDA	1000-1	418 (500-1)	1000-1 1/8	418 (500-1 1/8)
<b>C</b> CIRCLING	1040-1	451 (500-1)	1220-1 3/4 631 (700-1 3/4)	1220-2 631 (700-2)

EC-2, 15 MAY 2025 to 12 JUN 2025

EC-2, 15 MAY 2025 to 12 JUN 2025