

LOC I-HUF 109.7	APP CRS 229°	Rwy Idg 9020
		TDZE 582
		Apt Elev 589

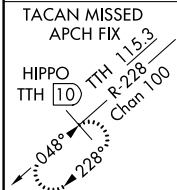
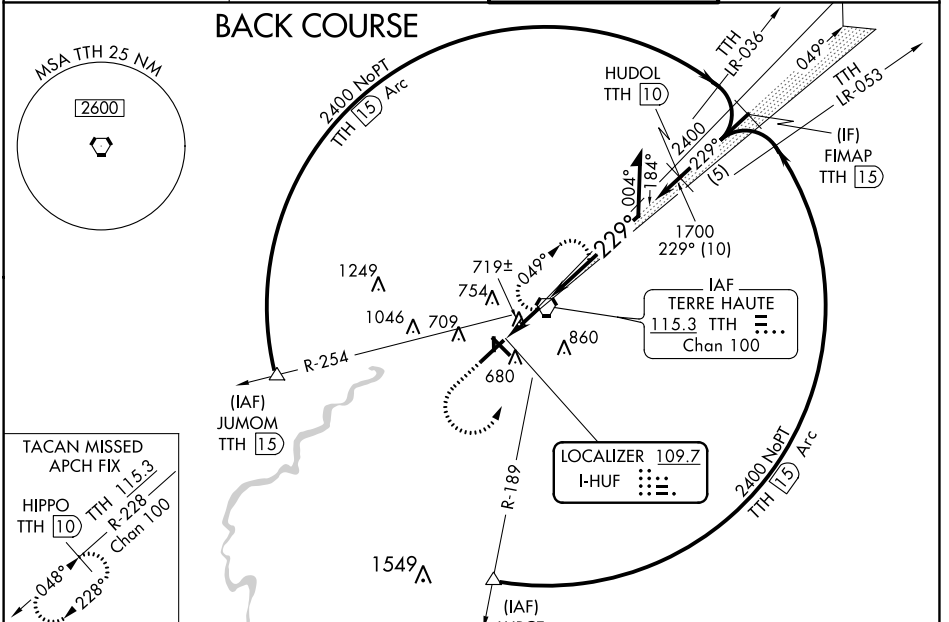
LOC BC RWY 23

TERRE HAUTE INTL-HULMAN FIELD (HUF)

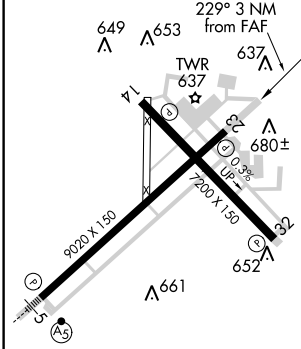
⚠ When local altimeter setting not received, use Paris altimeter setting and increase all MDA 80 feet and increase S-23 Cat C and D visibility 1/4 mile.
⚠ Circling NA for Cat E NW of Rwy 5-23. Circling Rws 14 and 36 NA at night. When VGSI inoperative, Circling Rwy 18 NA at night.

MISSED APPROACH: Climb to 2000 then climbing left turn to 2400 direct TTH VORTAC and hold.
 (TACAN Aircraft climb to 2600 via TTH VORTAC R-228 to HIPPO/TTH 10 DME and hold.)

ATIS 127.5 269.375	HULMAN APP CON 125.45 339.8	HULMAN TOWER 134.725 239.0	GND CON 121.6 348.6
------------------------------	---------------------------------------	--------------------------------------	-------------------------------



ELEV 589	D	TDZE 582
----------	----------	----------

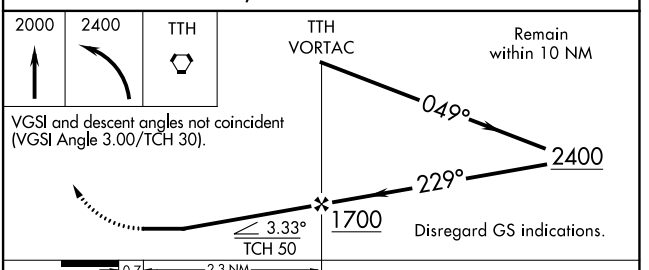


MIRL Rwy 18-36
 REIL Rws 14, 23 and 32
 HIRL Rws 5-23 and 14-32

FAF to MAP 2.3 NM

Knots	60	90	120	150	180
Min:Sec	2:18	1:32	1:09	0:55	0:46

PROCEDURE TURN NA FOR CAT E, DME or RADAR REQUIRED.



CATEGORY	A	B	C	D	E
S-23	980-1 398 (400-1)			980-1 1/4 398 (400-1 1/2)	980-1 1/2 398 (400-1 1/2)
CIRCLING	1020-1 431 (500-1)	1040-1 451 (500-1)	1040-1 1/2 451 (500-1 1/2)	1140-2 551 (600-2)	1220-2 1/4 631 (700-2 1/4)

EC-2, 04 JAN 2018 to 01 FEB 2018

EC-2, 04 JAN 2018 to 01 FEB 2018