

LOC I-HUF 109.7	APP CRS 049°	Rwy Idg 9020
		TDZE 578
		Apt Elev 589

ILS or LOC RWY 5

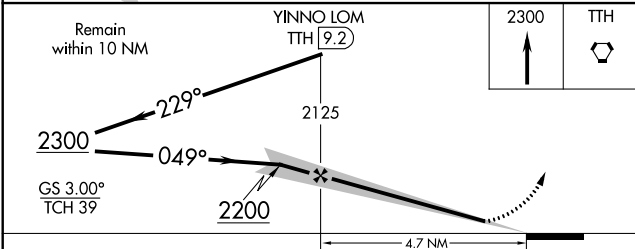
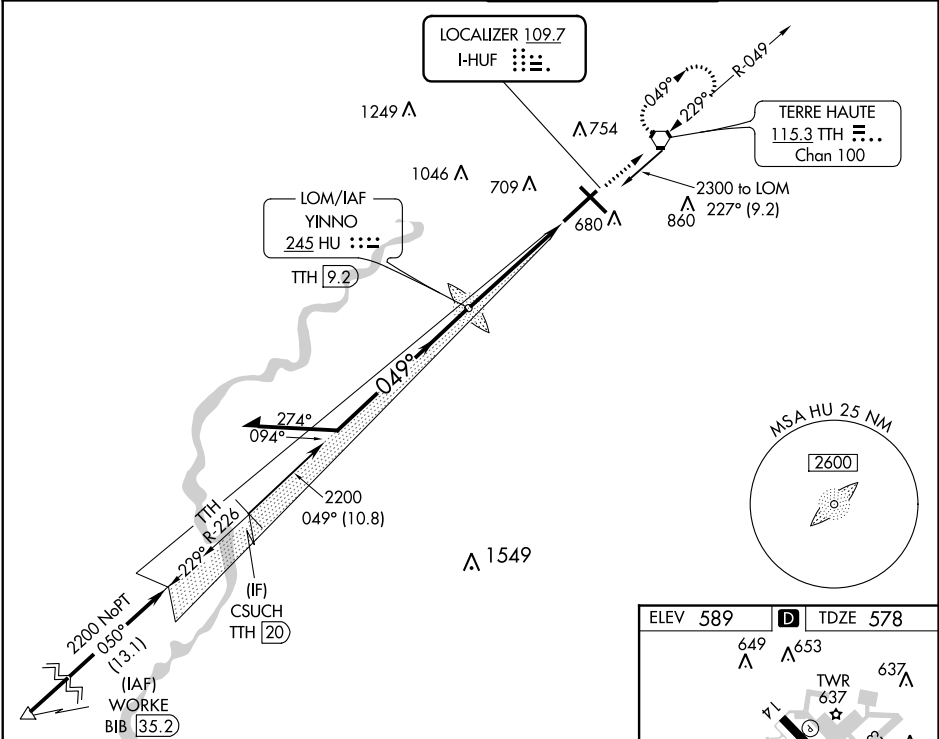
TERRE HAUTE RGNL (HUF)

⚠ When local altimeter setting not received, use Paris altimeter setting and increase all DA 61 feet and all MDA 80 feet, increase S-LOC 5 Cats C/D visibility to RVR 4000 and Circling Cat C/D visibility 1/4 mile. For inop MALSR, when using Paris altimeter setting increase S-ILS 5 all Cats visibility to RVR 5000 and S-LOC Rwy 5 Cats C/D visibility to 1 3/8.
ASR **RVR 1800 authorized with the use of FD or AP or HUD to DA, NA when using Paris altimeter setting.

MALSR

MISSED APPROACH:
 Climb to 2300 direct TTH VORTAC and hold.

ATIS 127.5 269.375	HULMAN APP CON 125.45 339.8	HULMAN TOWER 134.725 239.0	GND CON 121.6 348.6
------------------------------	---------------------------------------	--------------------------------------	-------------------------------



ELEV 589	D	TDZE 578
----------	----------	----------

REIL Rwy 14, 23 and 32
 HIRL Rwy 5-23 and 14-32
 FAF to MAP 4.7 NM

Knots	60	90	120	150	180
Min:Sec	4:42	3:08	2:21	1:53	1:34

CATEGORY	A	B	C	D
S-ILS 5		**778/24	200 (200-1/2)	
S-LOC 5	940/24	362 (400-1/2)	940/35	362 (400-3/4)
C CIRCLING	1020-1 431 (500-1)	1040-1 451 (500-1)	1220-1 1/4 631 (700-1 1/4)	1260-2 1/4 671 (700-2 1/4)

EC-2, 21 JUN 2018 to 19 JUL 2018

EC-2, 21 JUN 2018 to 19 JUL 2018