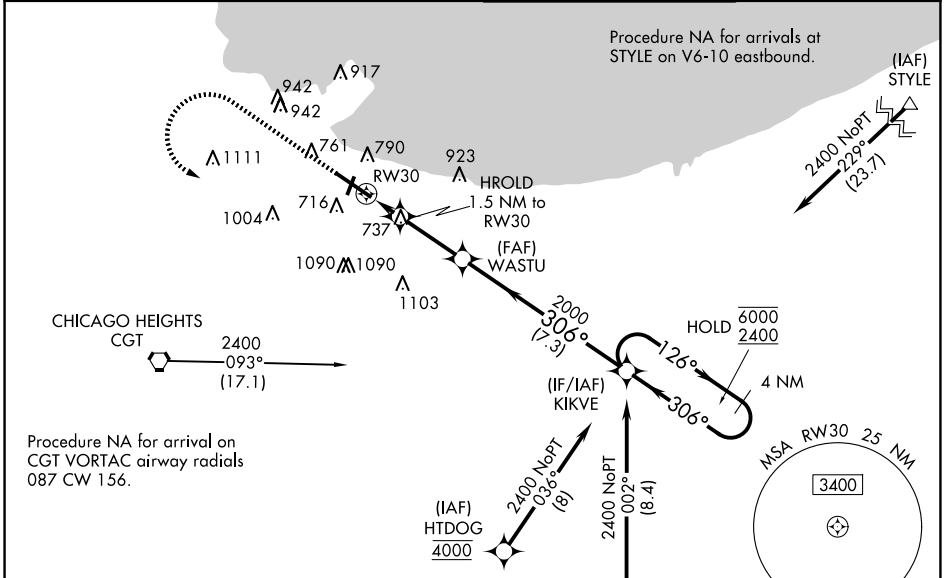


WAAS CH 78323 W30A	APP CRS 306°	Rwy ldg TDZE Apt Elev	7959 591 597
--	------------------------	-----------------------------	---

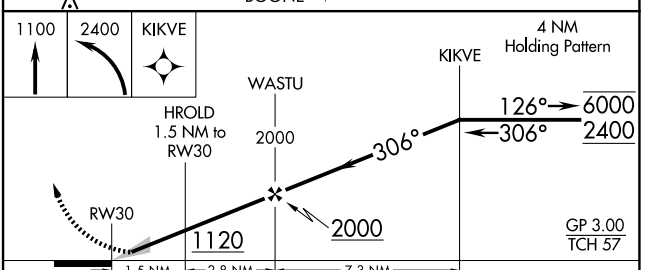
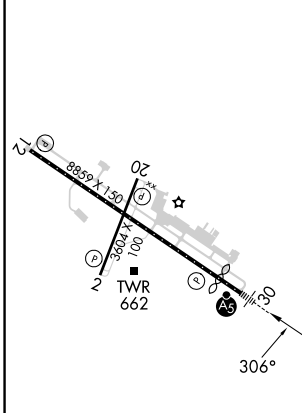
RNAV (GPS) Y RWY 30

GARY/CHICAGO INTL (GYY)

RNP APCH - GPS.		MALSR	MISSED APPROACH: Climb to 1100 then climbing left turn to 2400 direct KIKVE and hold.
ATIS 134.575	CHICAGO APP CON 133.1 285.6	GARY TOWER ★ 125.6 (CTAF)	GND CON 121.9



ELEV 597	D	TDZE 591
----------	----------	----------



CATEGORY	A	B	C	D
LPV DA**		791/24	200 (200-1/2)	
LNAV/VNAV DA		991/35	400 (400-5/8)	
LNAV MDA	1000/24	409 (500-1/2)	1000/40	409 (500-3/4)
C CIRCLING	1160-1 563 (600-1)	1180-1 583 (600-1)	1400-2 1/4 803 (900-2 1/4)	1420-2 3/4 823 (900-2 3/4)

REIL Rwy 2, 12 and 20 **1**
HIRL Rwy 12-30 **1**
MIRL Rwy 2-20 **1**

EC-2, 15 MAY 2025 to 12 JUN 2025

EC-2, 15 MAY 2025 to 12 JUN 2025