

WAAS CH 40201 W09A	APP CRS 094°	Rwy Idg 6406 TDZE 880 Apt Elev 881
--	------------------------	---

RNAV (GPS) RWY 9

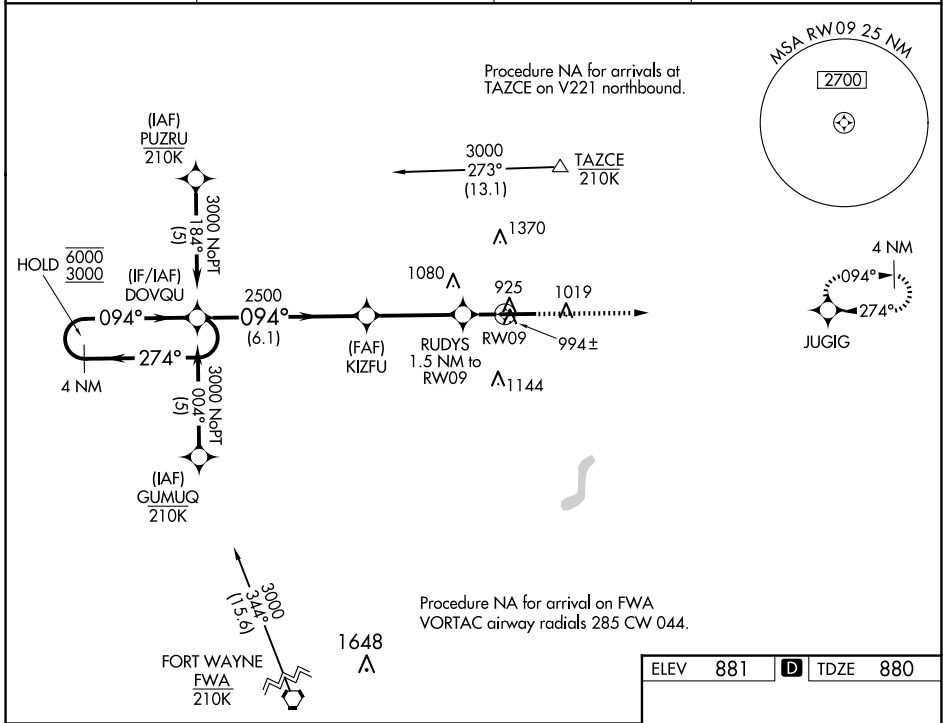
DE KALB COUNTY (GWB)

RNP APCH - GPS.

⚠ For uncompensated Baro-VNAV systems, LNAV/VNAV NA below -16°C or above 54°C.

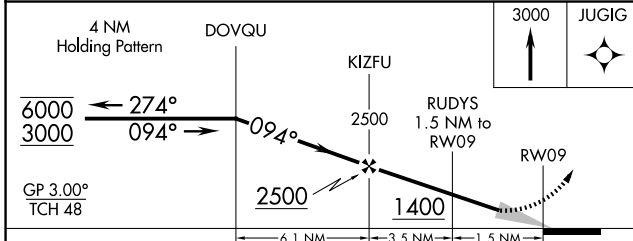
MISSED APPROACH:
Climb to 3000 direct
JUGIG and hold.

AWOS-3P 124.15	FORT WAYNE APP CON 127.2 284.6	CLNC DEL 126.6	UNICOM 123.0 (CTAF) 0
--------------------------	--	--------------------------	---------------------------------



EC-2, 15 MAY 2025 to 12 JUN 2025

EC-2, 15 MAY 2025 to 12 JUN 2025



CATEGORY	A	B	C	D
LPV DA		1130-3/4	250 (300-3/4)	
LNAV/VNAV DA		1155-7/8	275 (300-7/8)	
LNAV MDA		1260-1	380 (400-1)	
C CIRCLING	1320-1 439 (500-1)	1560-1 679 (700-1)	1720-2 1/2 839 (900-2 1/2)	1720-2 3/4 839 (900-2 3/4)

ELEV 881	D TDZE 880
----------	-------------------