

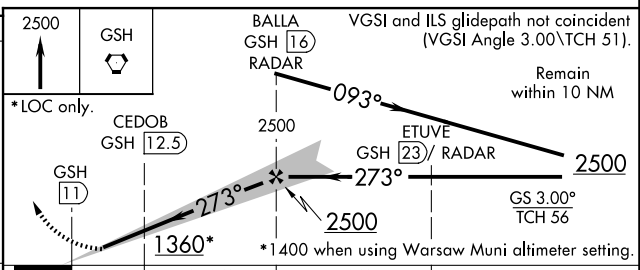
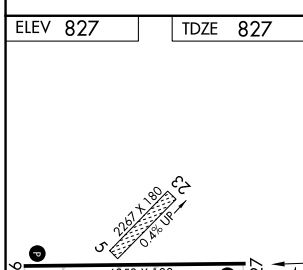
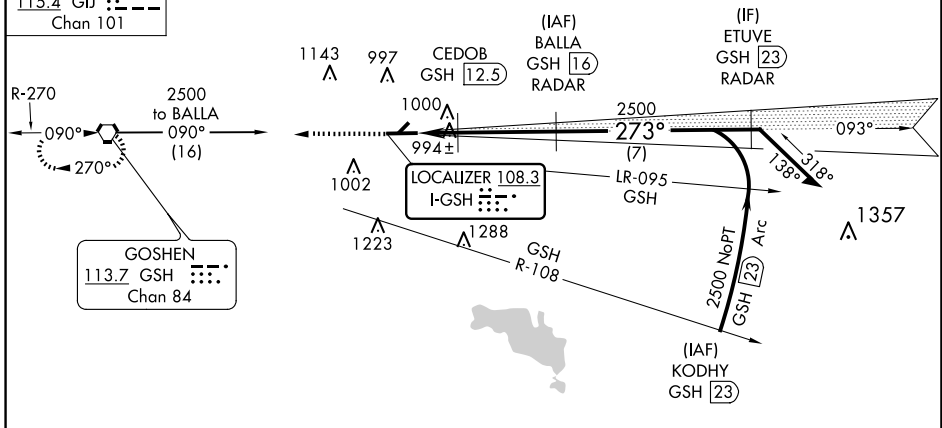
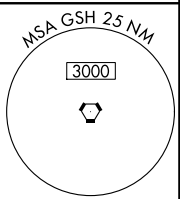
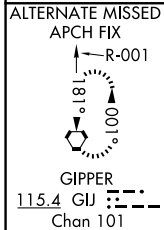
LOC I-GSH 108.3	APP CRS 273°	Rwy Idg 6050
		TDZE 827
		Apr Elev 827

ILS or LOC RWY 27

GOSHEN MUNI (GSH)

DME or RADAR required.		WSI APPROACH: Climb to 2500 direct GSH VORTAC and hold.
⚠️ When local altimeter setting not received, use Warsaw altimeter setting; increase DA to 1067 feet and all MDAs 40 feet; increase S-LOC 27 Cats C/D visibility 1/8 SM and all Circling Cat D visibilities 1/4 SM. Circling NA to Rwy's 5 and 23.		

ASOS 121.45	SOUTH BEND APP CON * 132.05 257.8	CLNC DEL 125.25	UNICOM 123.05 (CTAF) 0
-----------------------	---	---------------------------	----------------------------------



CATEGORY	A	B	C	D
S-ILS 27	1027-3/4 200 (200-3/4)			
S-LOC 27	1360-1	533 (600-1)	1360-1 1/2 533 (600-1 1/2)	1360-1 3/4 533 (600-1 3/4)
CIRCLING	1360-1	533 (600-1)	1500-2 673 (700-2)	1540-2 1/4 713 (800-2 1/4)
CEDOB FIX MINIMUMS				
S-LOC 27	1300-1	473 (500-1)	1300-1 3/8 473 (500-1 3/8)	1300-1 1/2 473 (500-1 1/2)
CIRCLING	1300-1 473 (500-1)	1320-1 493 (500-1)	1500-2 673 (700-2)	1540-2 1/4 713 (800-2 1/4)

FAF to MAP 5 NM

Knots	60	90	120	150	180
Min:Sec	5:00	3:20	2:30	2:00	1:40

HIRL Rwy 9-27
REIL Rwy's 9 and 27

EC-2, 15 MAY 2025 to 12 JUN 2025

EC-2, 15 MAY 2025 to 12 JUN 2025