

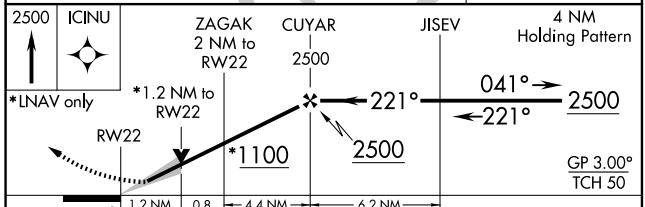
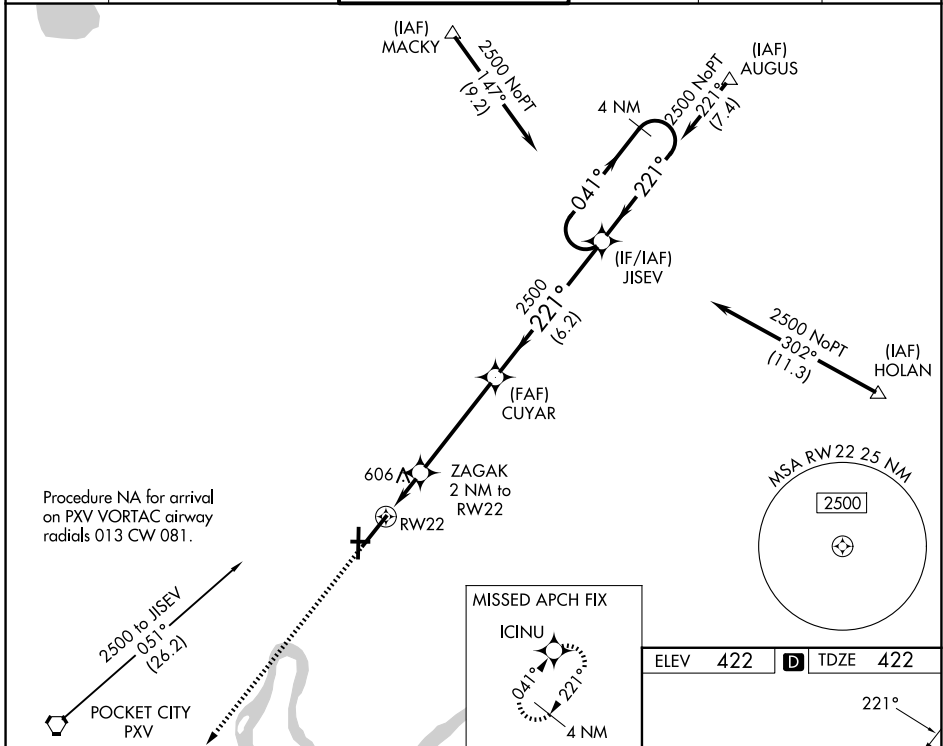
WAAS CH 42512 W22A	APP CRS 221°	Rwy Ldg TDZE Apt Elev	8021 422 422
----------------------------------------	------------------------	-----------------------------	-----------------------------------------

RNAV (GPS) RWY 22

EVANSVILLE RGNL (EVV)

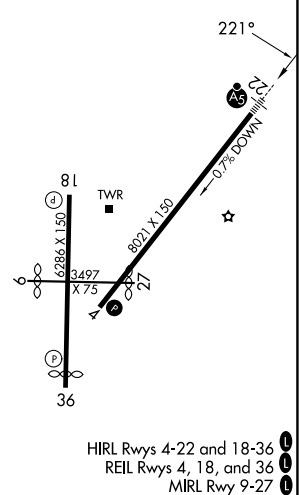
	For uncompensated Baro-VNAV systems, LNAV/VNAV NA below -15°C (5°F) or above 54°C (130°F). DME/DME RNP-0.3 NA. Circling Rwy 9 NA at night. ** RVR 1800 authorized with the use of FD or AP or HUD to DA.		MISSED APPROACH: Climb to 2500 direct ICINU and hold.

ATIS 120.2	EVANSVILLE APP CON ★ 124.025 290.9	EVANSVILLE TOWER ★ 118.7 (CTAF) 257.8	GND CON 121.9	CLNC DEL 126.6	UNICOM 122.95
----------------------	----------------------------------------------	-------------------------------------------------	-------------------------	--------------------------	-------------------------



ELEV 422		TDZE 422
----------	--	----------

2500 *LNAV only	ZAGAK 2 NM to RW22 *1.2 NM to RW22	CUYAR 2500 *1100	JISEV 2500	4 NM Holding Pattern 2500 GP 3.00° TCH 50
CATEGORY	A	B	C	D
LPV DA		**622/24	200 (200-½)	
LNAV/VNAV DA		840/45	418 (500-¾)	
LNAV MDA	860/24	438 (500-½)	860/40	438 (500-¾)
CIRCLING	920-1 498 (500-1)	1040-1 618 (700-1)	1040-1¾ 618 (700-1¾)	1040-2 618 (700-2)



EC-2, 07 AUG 2025 to 04 SEP 2025

EC-2, 07 AUG 2025 to 04 SEP 2025

HIRL Rwy 4-22 and 18-36
REIL Rwy 4, 18, and 36
MIRL Rwy 9-27