

APP CRS	Rwy Idg	<b>3999</b>
<b>176°</b>	TDZE	<b>777</b>
	Apt Elev	<b>778</b>

# RNAV (GPS) RWY 18

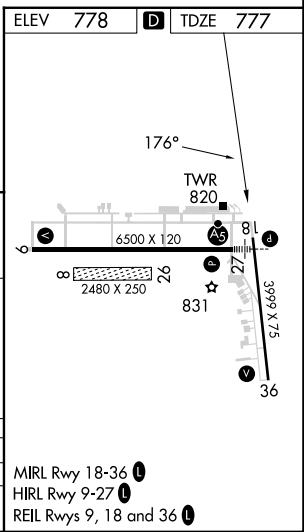
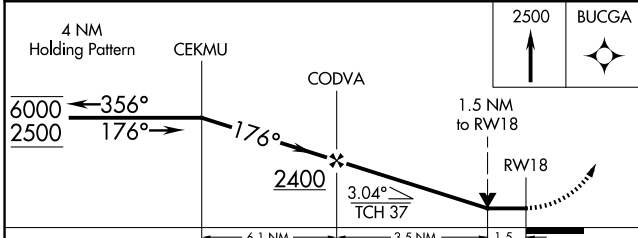
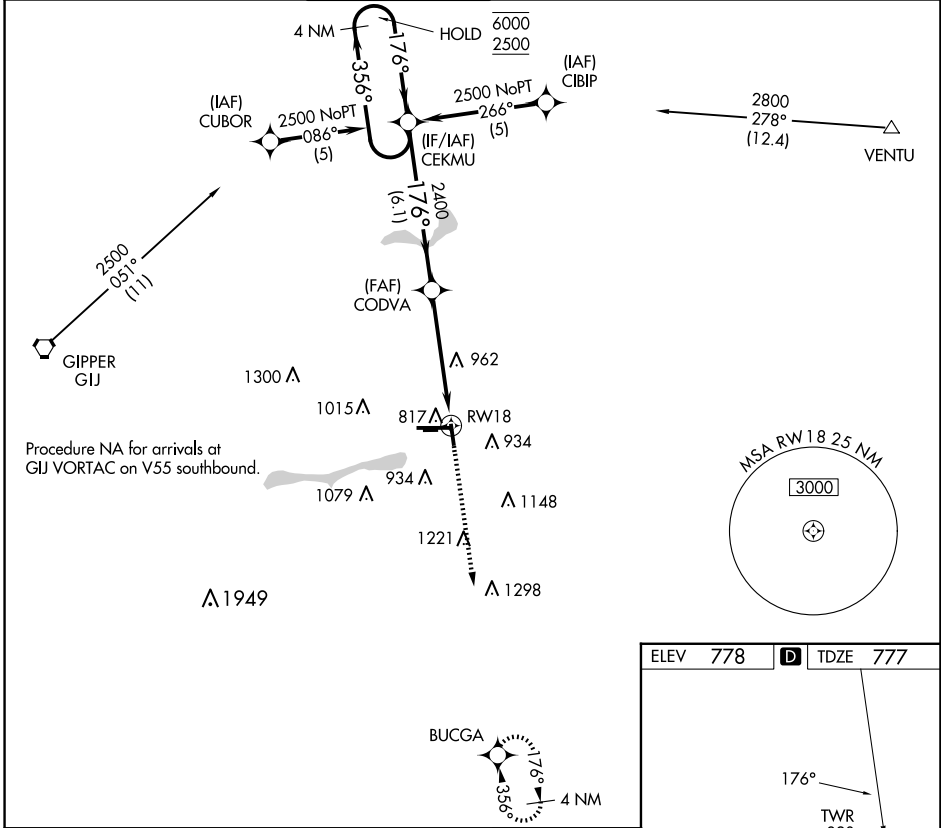
ELKHART MUNI (EKM)

RNP APCH - GPS.

**▼** Circling NA to Rwy 8 and 26. Circling to Rwy 36 NA at night. Rwy 18 helicopter visibility reduction below 3/4 SM NA. VDP NA with South Bend altimeter setting. When local altimeter setting not received, use South Bend altimeter setting and increase all MDAs 40 feet.

**▲** MISSED APPROACH: Climb to 2500 direct BUCGA and hold.

AWOS-3	SOUTH BEND APP CON ★	ELKHART TOWER ★	GND CON	CLNC DEL	CLNC DEL	UNICOM
<b>124.475</b>	<b>118.55 257.8</b>	<b>119.5 (CTAF) 0</b>	<b>121.8</b>	<b>121.8</b>	<b>119.7</b> (When twr closed)	<b>122.95</b>



CATEGORY	A	B	C	D
LNAV MDA	1280-1	503 (600-1)	1280-1 <sup>3</sup> / <sub>8</sub>	503 (600-1 <sup>3</sup> / <sub>8</sub> )
<b>C</b> CIRCLING	1280-1 502 (600-1)	1300-1 522 (600-1)	1380-1 <sup>3</sup> / <sub>4</sub> 602 (700-1 <sup>3</sup> / <sub>4</sub> )	1580-2 <sup>1</sup> / <sub>2</sub> 802 (900-2 <sup>1</sup> / <sub>2</sub> )

MIRL Rwy 18-36 **Ⓛ**  
 HIRL Rwy 9-27 **Ⓛ**  
 REIL Rwys 9, 18 and 36 **Ⓛ**

EC-2, 07 AUG 2025 to 04 SEP 2025

EC-2, 07 AUG 2025 to 04 SEP 2025