

LOC I-SQK 108.35	APP CRS 185°	Rwy Idg TDZE Apt Elev	6503 866 866
----------------------------	------------------------	-----------------------------	---

ILS or LOC RWY 18

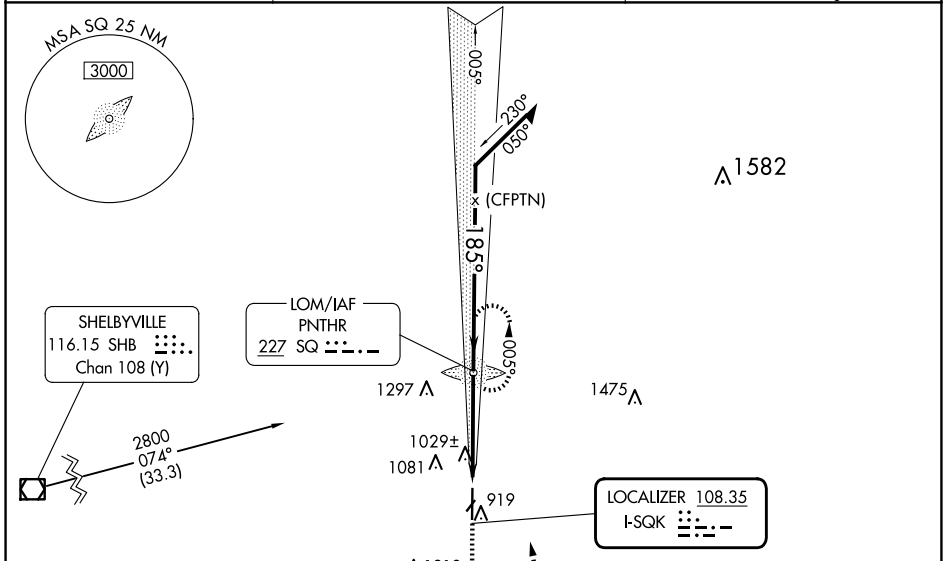
METTEL FLD (CEV)

ADF required.

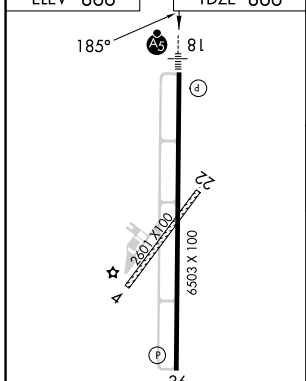
NA Circling NA to Rwys 4 and 22. For inop MALS, increase S-LOC 18 Cats C/D visibility to 1½ mile. When local altimeter setting not received, use James M Cox Dayton Intl altimeter setting and increase ILS DA to 1237 feet and visibility all Cats to ¾ mile, increase all MDA 140 feet and LOC Cats C/D visibility to 1½ mile, and Circling Cat B visibility to 1¼ miles and Cat C to 2¾ miles and Cat D to 3 miles. When using James M Cox Dayton Intl altimeter setting: for inop MALS, increase S-ILS 18 all Cats visibility to 1 mile and increase S-LOC 18 Cat A/B visibility to 1 mile and Cat C/D to 1½ mile.

MALS MISSED APPROACH: Climb to 2800 then left turn direct SQ LOM and hold.

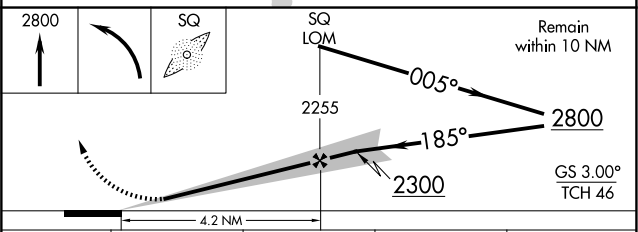
AWOS-3 118.325	COLUMBUS APP CON 134.45 352.05	UNICOM 122.8 (CTAF)
--------------------------	--	-------------------------------



ELEV 866	TDZE 866
----------	----------



MIRL Rwy 18-36	REIL Rwy 36
FAF to MAP 4.2 NM	
Knots	60 90 120 150 180
Min:Sec	4:12 2:48 2:06 1:41 1:24



CATEGORY	A	B	C	D
S-ILS 18	1116-½		250 (300-½)	
S-LOC 18	1280-½	414 (500-½)	1280-¾	414 (500-¾)
CIRCLING	1440-1 574 (600-1)	1540-1 674 (700-1)	1620-2¼ 754 (800-2¼)	1620-2½ 754 (800-2½)

EC-2, 15 MAY 2025 to 12 JUN 2025

EC-2, 15 MAY 2025 to 12 JUN 2025