


WAAS CH <b>72812</b> W <b>35A</b>	APP CRS <b>354°</b>	Rwy Idg <b>6500</b> TDZE <b>844</b> Apt Elev <b>846</b>
---	------------------------	---

# RNAV (GPS) RWY 35


MONROE COUNTY (BMG)

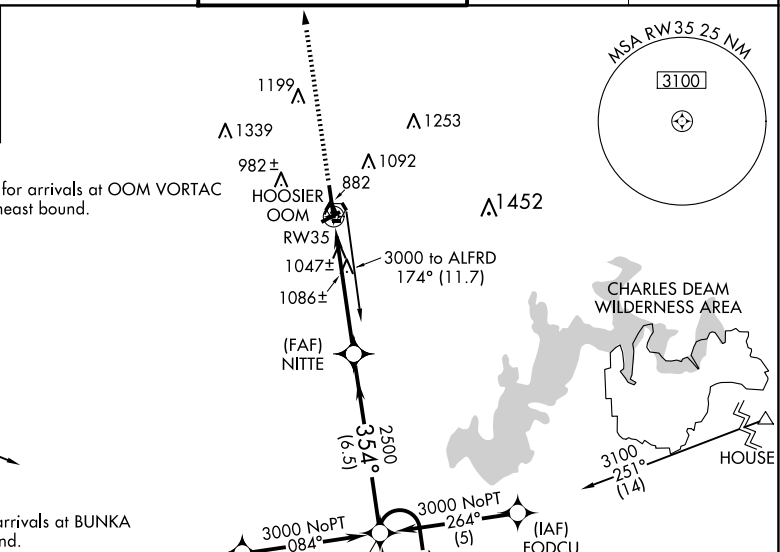
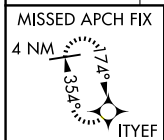
**▼** For uncompensated Baro-VNAV systems, LNAV/VNAV NA below -16°C (4°F) or above 47°C (116°F). DME/DME RNP-0.3 NA. When local altimeter setting not received, use Terre Haute Rgnl altimeter setting; increase LPV DA to 1165, LNAV/VNAV DA to 1465 and all MDA 140 feet and increase LPV all Cats, LNAV Cat C, D visibility ¼ SM, LNAV/VNAV all Cats and Circling C and D visibility ½ SM. For inoperative MALS/R when using Terre Haute Rgnl altimeter setting; increase LPV all Cats visibility ½ mile. Baro-VNAV and VDP NA when using Terre Haute Rgnl altimeter setting. Circling to Rwy 6/24 NA at night.

MALS/R

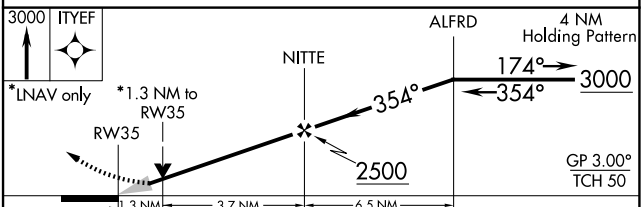
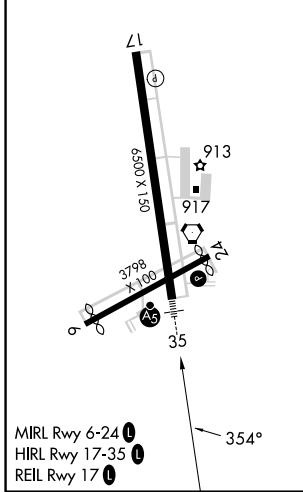


MISSED APPROACH:  
Climb to 3000 direct IITYEF and hold.

ASOS <b>134.525</b>	HULMAN APP CON <b>128.025 339.8</b>	BLOOMINGTON TOWER * <b>120.775 (CTAF)</b> 	GND CON <b>121.9</b>	UNICOM <b>122.95</b>
------------------------	--	--	-------------------------	-------------------------



ELEV <b>846</b>	TDZE <b>844</b>
-----------------	-----------------



CATEGORY	A	B	C	D
LPV DA		1044-1½	200 (200-1½)	
LNAV/VNAV DA		1344-1¼	500 (500-1¼)	
LNAV MDA	1300-1½	456 (500-½)	1300-¾ 456 (500-¾)	1300-1 456 (500-1)
CIRCLING	1380-1 534 (600-1)	1400-1 554 (600-1)	1400-1½ 554 (600-1½)	1620-2½ 774 (800-2½)

EC-2, 15 MAY 2025 to 12 JUN 2025

EC-2, 15 MAY 2025 to 12 JUN 2025