

WAAS CH 56412 W17A	APP CRS 174°	Rwy Idg 6500 TDZE 845 Apt Elev 846
--	------------------------	---

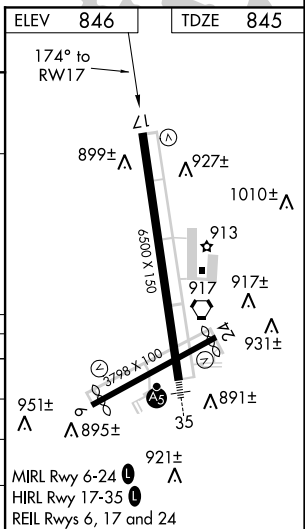
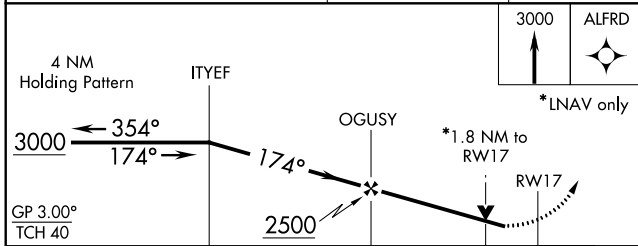
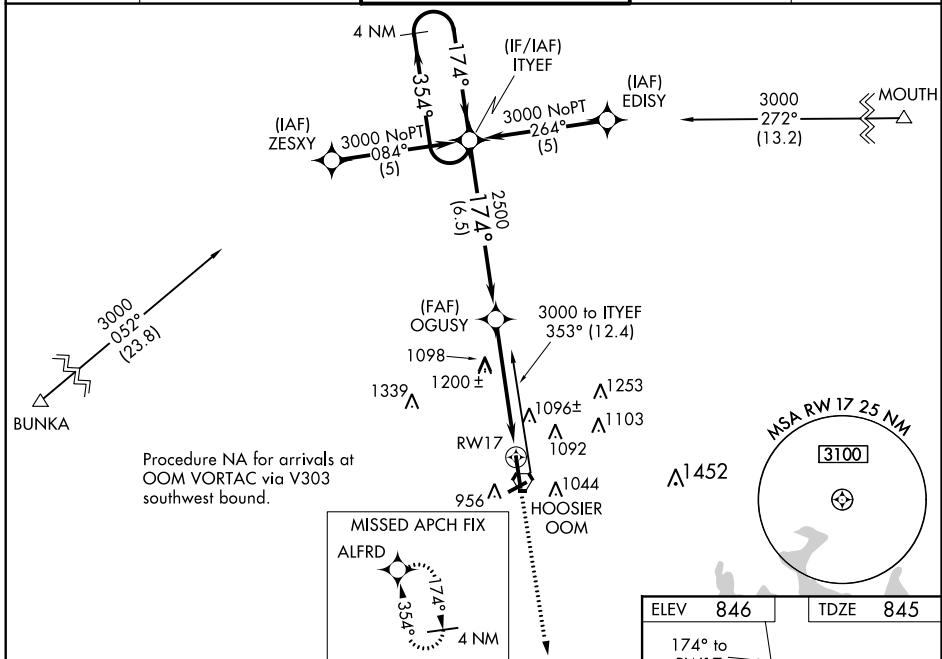
RNAV (GPS) RWY 17

MONROE COUNTY (BMG)

⚠ For uncompensated Baro-VNAV systems, LNAV/VNAV NA below -16°C (4°F) or above 47°C (116°F). DME/DME RNP-0.3 NA. Helicopter visibility reduction below 3/4 SM NA.
⚠ When local altimeter setting not received, use Terre Haute Inil-Hulman Field altimeter setting and increase all DA 121 feet and all MDA 140 feet. Increase LPV all Cats, LNAV/VNAV all Cats, LNAV Cat C/D and Circling Cat C visibility 1/2 mile, Circling D visibility 1/4 mile. Circling to Rwy 6/24 NA at night.

MISSED APPROACH: Climb to 3000 direct ALFRD and hold.

ASOS 110.2	HULMAN APP CON 128.025 339.8	BLOOMINGTON TOWER * 120.775 (CTAF) 0	GND CON 121.9	UNICOM 122.95
----------------------	--	--	-------------------------	-------------------------



CATEGORY	A	B	C	D
LPV DA		1229-1¼	384 (400-1¼)	
LNAV/VNAV DA		1404-2	559 (600-2)	
LNAV MDA	1460-1 614 (700-1)		1460-1¾ 614 (700-1¾)	1460-2 614 (700-2)
CIRCLING	1460-1 614 (700-1)		1460-1¾ 614 (700-1¾)	1460-2 614 (700-2)

EC-2, 04 JAN 2018 to 01 FEB 2018

EC-2, 04 JAN 2018 to 01 FEB 2018