

APP CRS	Rwy Idg	<b>3280</b>
<b>134°</b>	TDZE	<b>1161</b>
	Apt Elev	<b>1174</b>

# RNAV (GPS) RWY 13

HARRISON COUNTY (8G6)

RNP APCH.

**▽** Rwy 13 helicopter visibility reduction below 1 SM NA. Use Wheeling altimeter setting; when not received, use Washington altimeter setting and increase all MDA 40 feet. Procedure NA at night.

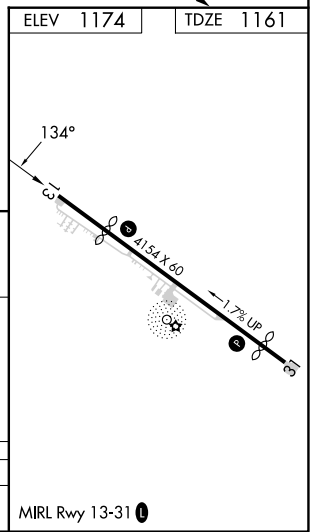
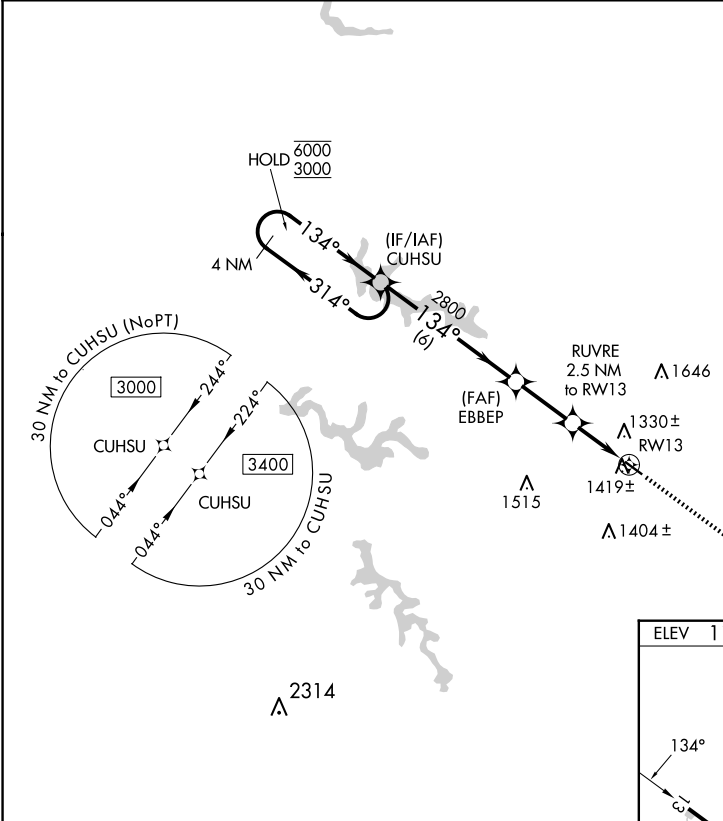
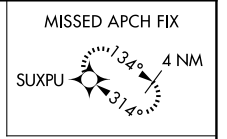
**△** NA

MISSED APPROACH: Climb to 3100 direct SUXPU and hold.

HLG ASOS  
**127.375**

CLEVELAND CENTER  
**126.95 239.30**

UNICOM  
**122.8 (CTAF) 0**



4 NM Holding Pattern		Visual Segment - Obstacles.		3100	SUXPU
CUHSU		EBBEP		↑	✧
RW13		RUVRE 2.5 NM to RW13			
CATEGORY	A	B	C	D	
LNAV MDA	1720-1	559 (600-1)	NA		

EC-2, 07 AUG 2025 to 04 SEP 2025

EC-2, 07 AUG 2025 to 04 SEP 2025