

APP CRS **279°**  
 Rwy Idg **3753**  
 TDZE **1063**  
 Apt Elev **1070**

# RNAV (GPS) RWY 28

YOUNGSTOWN ELSER METRO (4G4)

RNP APCH - GPS.

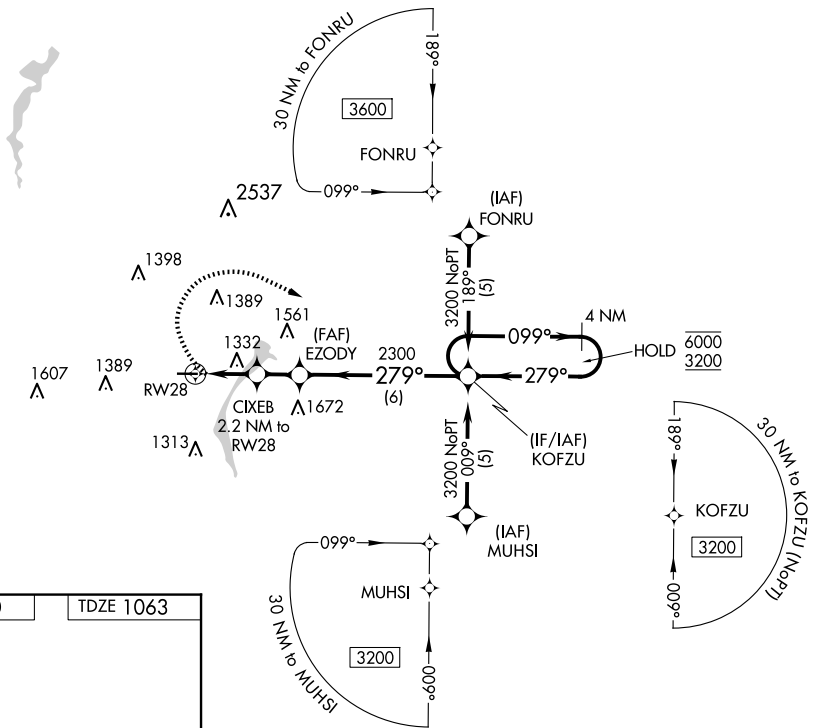
Procedure NA at night. Rwy 28 helicopter visibility reduction below 1 SM NA. Obtain local altimeter setting on CTAF; when not received, use New Castle altimeter setting and increase all MDA 40 feet.

MISSED APPROACH: Climbing right turn to 3200 direct KOFZU and hold.

YOUNGSTOWN APP CON ★  
**133.95 322.3**

CLNC DEL  
**119.25**

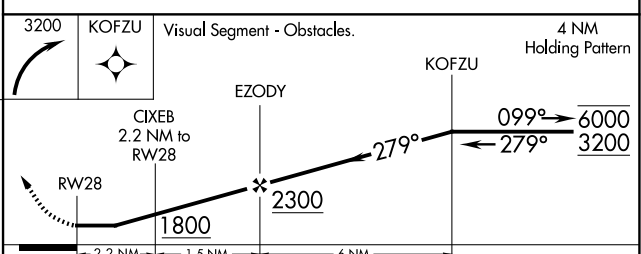
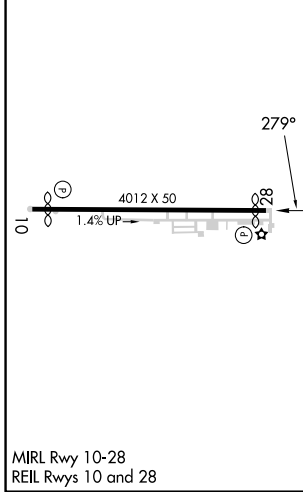
UNICOM  
**123.05** (CTAF)



EC-2, 15 MAY 2025 to 12 JUN 2025

EC-2, 15 MAY 2025 to 12 JUN 2025

ELEV 1070 TDZE 1063



CATEGORY	A	B	C	D
LNAV MDA	1600-1	537 (600-1)	NA	
CIRCLING	1660-1	590 (600-1)	NA	