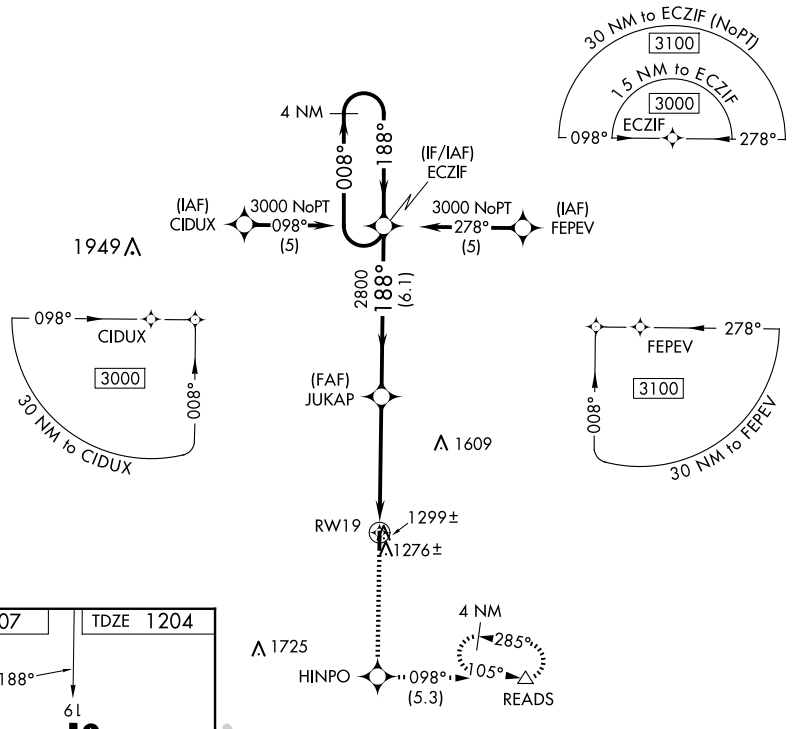


APP CRS	Rwy Idg	<b>3501</b>
<b>188°</b>	TDZE	<b>1204</b>
	Apt Elev	<b>1207</b>

# RNAV (GPS) RWY 19

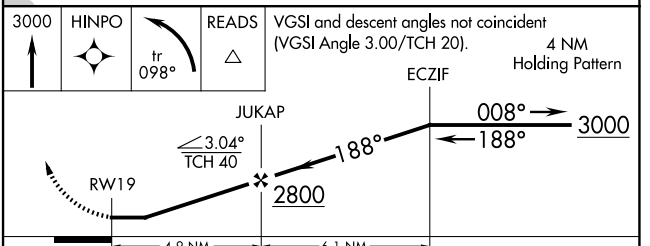
ASHLAND COUNTY (3G4)

RNP APCH.		MISSED APPROACH: Climb to 3000 direct HINPO and left turn on track 098° to READS and hold.
▼ Rwy 19 helicopter visibility reduction below 1 SM NA. ▲ NA Procedure NA at night. Use Mansfield altimeter setting, when not received use Wooster altimeter setting.		
MFD ASOS <b>125.3</b>	CLEVELAND APP CON ★ <b>128.35 360.65</b>	UNICOM <b>122.7 (CTAF)</b>



ELEV 1207	TDZE 1204
-----------	-----------

REIL Rwy 1 and 19  
MIRL Rwy 1-19



CATEGORY	A	B	C	D
LNAV MDA	1600-1	396 (400-1)	1600-1 $\frac{1}{8}$ 396 (400-1 $\frac{1}{8}$ )	NA
CIRCLING	1660-1	453 (500-1)	1740-1 $\frac{1}{2}$ 533 (600-1 $\frac{1}{2}$ )	NA

EC-2, 15 MAY 2025 to 12 JUN 2025

EC-2, 15 MAY 2025 to 12 JUN 2025