

VORTAC MFD 108.8 Chan 25	APP CRS 276°	Rwy Idg TDZE Apt Elev	N/A N/A 1120
--	------------------------	-----------------------------	---

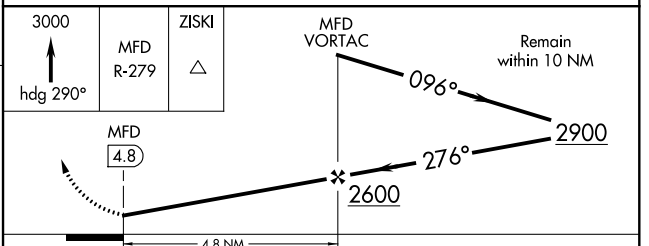
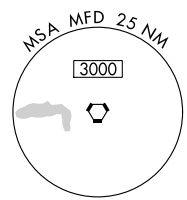
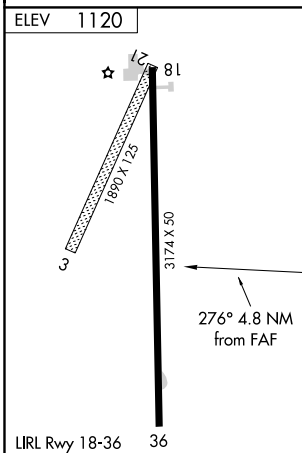
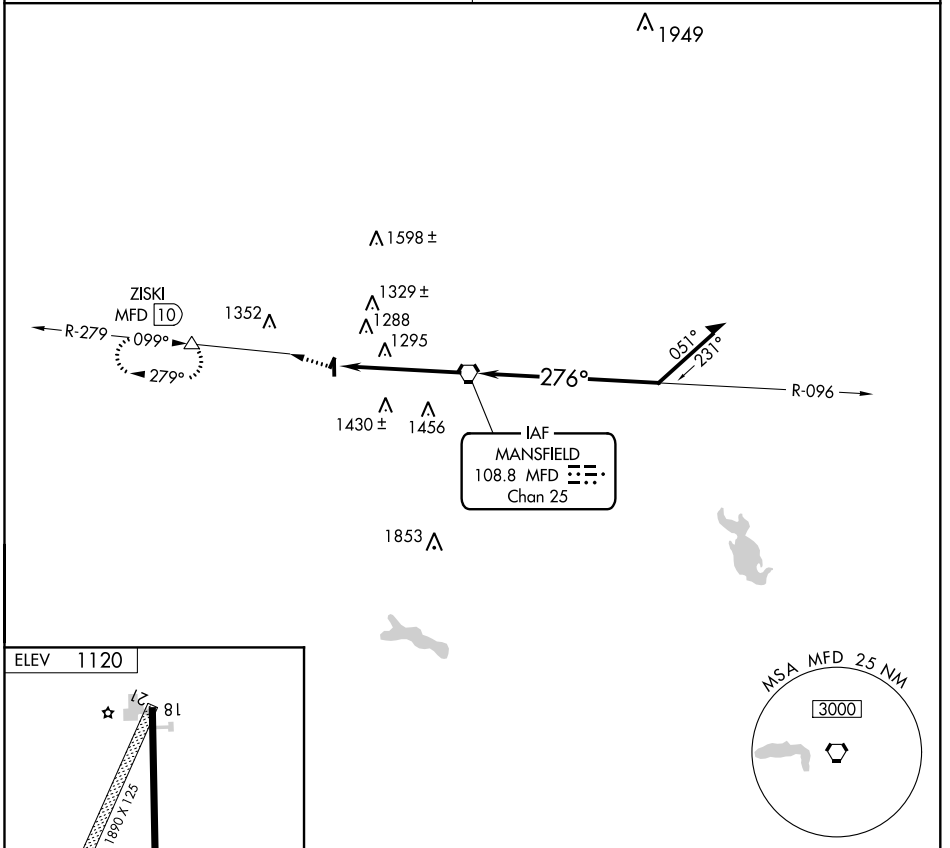
VOR-A
SHELBY COMMUNITY (12G)

DME required.
 ▼ Use Mansfield altimeter setting. Procedure NA at night.
 ▲ NA Circling to Rwy 3, 21 NA.

MISSED APPROACH: Climb to 3000 via heading 290° and MFD R-279 to ZISKI Int/MFD 10 DME and hold.

MANSFIELD APP CON ★
124.2 390.8

UNICOM
122.8 (CTAF)



FAF to MAP 4.8 NM						
Knots	60	90	120	150	180	
Min:Sec	4:48	3:12	2:24	1:55	1:36	
CATEGORY	A		B		C	D
CIRCLING	1640-1		520 (600-1)		1640-1½ 520 (600-1½)	NA

EC-2, 08 NOV 2018 to 06 DEC 2018

EC-2, 08 NOV 2018 to 06 DEC 2018