

| | | |
|---|------------------------|---|
| VOR/DME LFD 111.2 Chan 49 | APP CRS 328° | Rwy Idg TDZE Apt Elev NA NA 941 |
|---|------------------------|---|

VOR/DME-A
BROOKS FIELD (RMY)

⚠ When local altimeter setting not received, use Battle Creek altimeter setting and increase all MDA 40 Ft. Helicopter visibility reduction below 3/4 SM NA. Night landing: Rwy 10 NA.

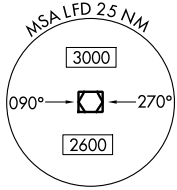
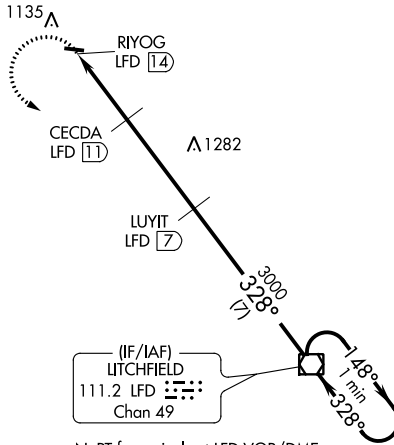
MISSED APPROACH: Climbing left turn to 3000 direct LFD VOR/DME and hold.

AWOS-3
120.025

KALAMAZOO APP CON*
119.2 239.25

UNICOM
122.8 (CTAF) **Ⓛ**

1359 **Δ**

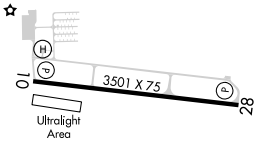


(IF/IAF)
LITCHFIELD
111.2 LFD
Chan 49

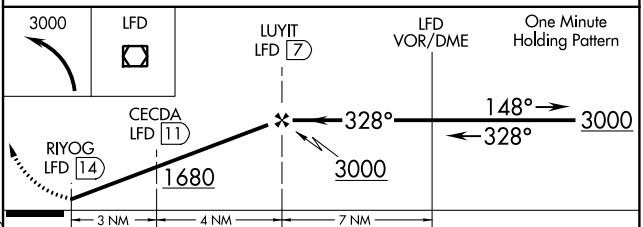
NoPT for arrivals at LFD VOR/DME on airway radials 054 CW 261.

ELEV **941**

Δ 1562



328° 7 NM from FAF



MIRL Rwy 10-28 **Ⓛ**

| | | | | |
|----------|--------|-------------|-------------------------|----|
| CATEGORY | A | B | C | D |
| CIRCLING | 1500-1 | 559 (600-1) | 1500-1½ 559 (600-1½) | NA |

EC-1, 21 JUN 2018 to 19 JUL 2018

EC-1, 21 JUN 2018 to 19 JUL 2018