

WAAS CH <b>45533</b> W <b>28A</b>	APP CRS <b>282°</b>	Rwy Idg TDZE Apt Elev	<b>3501</b> <b>941</b> <b>941</b>
---	------------------------	-----------------------------	---

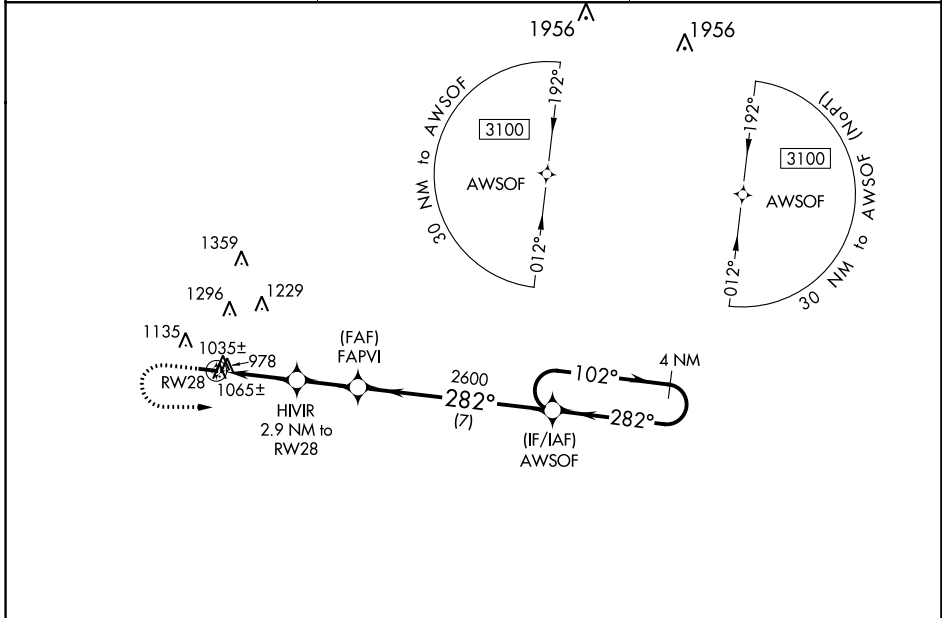
# RNAV (GPS) RWY 28

BROOKS FIELD (RMY)

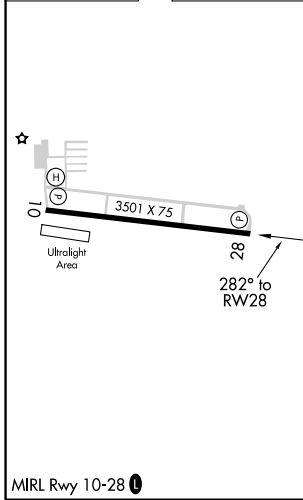
**⚠** DME/DME RNP-0.3 NA. VDP NA with Battle Creek altimeter setting. When local altimeter setting not received, use Battle Creek altimeter setting and increase all MDA 40 feet; increase LP and LNAV Cat C visibility 1/8 mile. Helicopter visibility reduction below 3/4 SM NA. Night landing: Rwy 10 NA.

**⚠** MISSED APPROACH: Climb to 1500 then climbing left turn to 3100 direct AWSOF and hold.

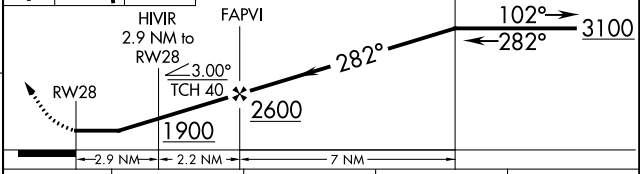
AWOS-3 <b>120.025</b>	KALAMAZOO APP CON* <b>119.2 239.25</b>	UNICOM <b>122.8 (CTAF) 0</b>
--------------------------	---	---------------------------------



ELEV 941	TDZE 941
----------	----------



1500 3100 AWSOF VGSI and descent angles not coincident (VGSI Angle 4.00/TCH 37). 4 NM Holding Pattern



CATEGORY	A	B	C	D
LP MDA	1300-1 359 (400-1)			NA
LNAV MDA	1320-1	379 (400-1)	1320-1 1/8 379 (400-1 1/8)	NA
CIRCLING	1440-1	499 (500-1)	1440-1 1/2 499 (500-1 1/2)	NA

EC-1, 04 JAN 2018 to 01 FEB 2018

EC-1, 04 JAN 2018 to 01 FEB 2018