

WAAS CH <b>82010</b> <b>W05A</b>	APP CRS <b>053°</b>	Rwy Idg TDZE Apt Elev	<b>8002</b> <b>666</b> <b>668</b>
--	------------------------	-----------------------------	---

# RNAV (GPS) RWY 5

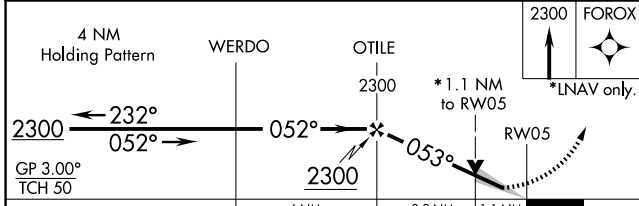
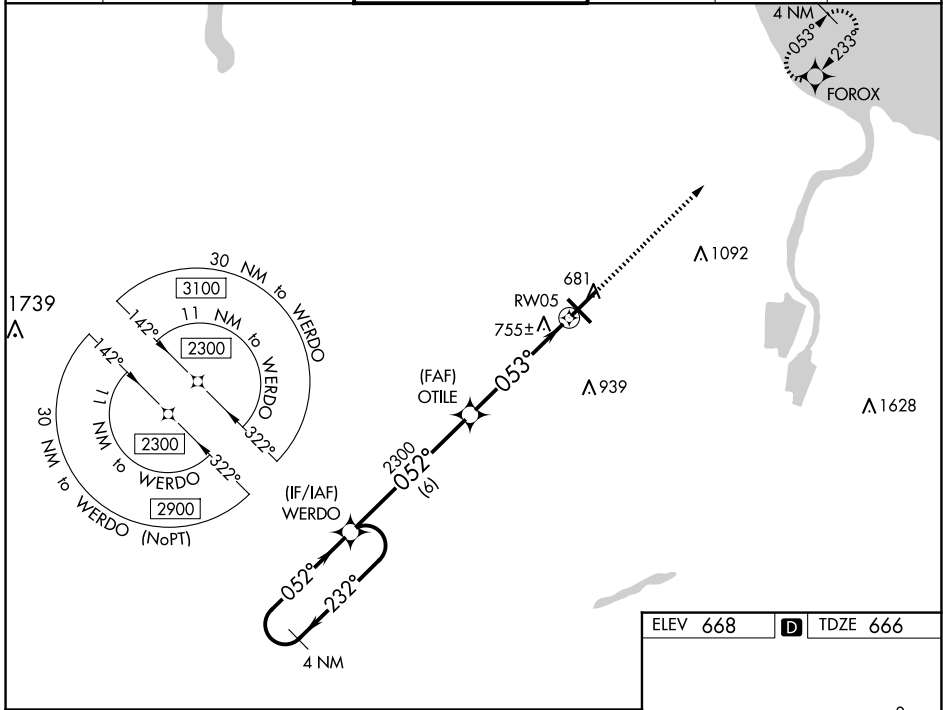
MBS INTL (MBS)

**▽** For uncompensated Baro-VNAV systems, LNAV/VNAV NA below -18°C (0°F) or above 54°C (130°F). DME/DME RNP-0.3 NA. For inoperative ALS, increase LNAV/VNAV all Cats visibility to RVR 4500 and LNAV Cats C/D visibility to RVR 6000.  
\*\* RVR 1800 authorized with use of FD or AP or HUD to DA.

MALSR

**MISSED APPROACH:**  
Climb to 2300 direct FOROX and hold.

ATIS <b>125.925</b>	GREAT LAKES APP CON* <b>126.45 235.625</b>	SAGINAW TOWER * <b>120.1(CTAF) 0 257.7</b>	GND CON <b>121.7</b>	CLNC DEL <b>121.85</b>	UNICOM <b>122.95</b>
------------------------	---	---	-------------------------	---------------------------	-------------------------



ELEV 668 **D** TDZE 666

REIL Rwy 14 and 32 **1**  
HIRL Rwy 5-23 and 14-32 **1**

EC-1, 15 MAY 2025 to 12 JUN 2025

EC-1, 15 MAY 2025 to 12 JUN 2025