

WAAS CH 90200 W28A	APP CRS 277°	Rwy Idg TDZE Apt Elev	5002 599 602
--	------------------------	-----------------------------	---

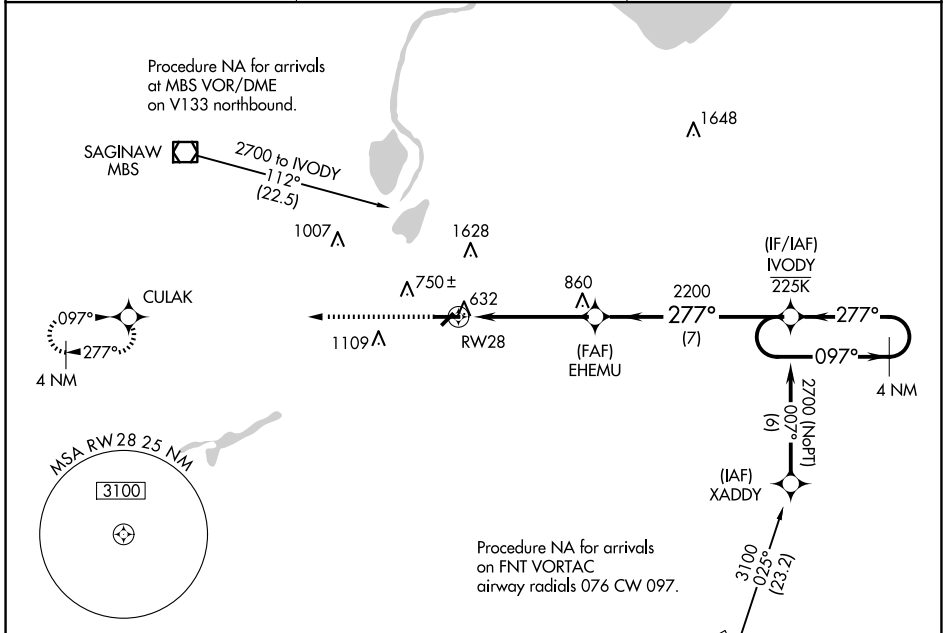
RNAV (GPS) RWY 28

SAGINAW COUNTY/H W BROWNE (HYX)

⚠ Inop table does not apply to LPV DA. For uncompensated Baro-VNAV systems, LNAV/VNAV NA below -18°C (0°F) or above 54°C (130°F). Circling NA for Cat C north of Rwy 10-28. Circling Rwy 5, 23 NA at night. DME/DME RNP-0.3 NA. For inop ALS, increase LNAV/VNAV all Cats visibility to ½ SM.

MALSF 	MISSED APPROACH: Climb to 2800 direct CULAK and hold.
-----------	---

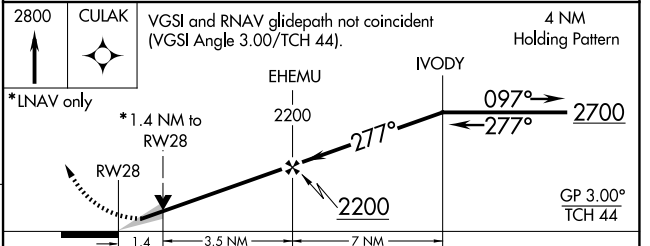
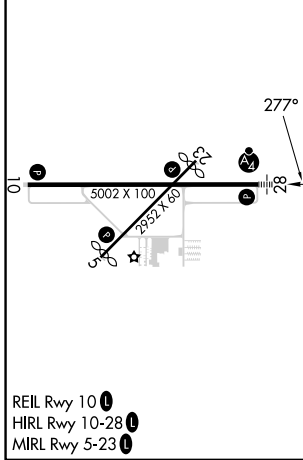
AWOS-3PT 118.325	GREAT LAKES APP CON* 120.95 235.625	UNICOM 122.8 (CTAF) 0
----------------------------	---	---------------------------------



EC-1, 15 MAY 2025 to 12 JUN 2025

EC-1, 15 MAY 2025 to 12 JUN 2025

ELEV 602	TDZE 599
----------	----------



CATEGORY	A	B	C	D
LPV DA	804-¾	205 (300-¾)		NA
LNAV/VNAV DA	849-¾	250 (300-¾)		NA
LNAV MDA	1080-¾	481 (500-¾)	1080-1½ 481 (500-1½)	NA
CIRCLING	1100-1	498 (500-1)	1460-2½ 858 (900-2½)	NA