

VOR CGG 109.8	APP CRS 128°	Rwy Ldg TDZE Apt Elev	5005 1154 1158
-------------------------	------------------------	-----------------------------	---

VOR RWY 14

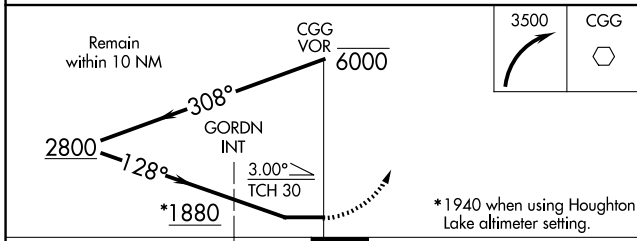
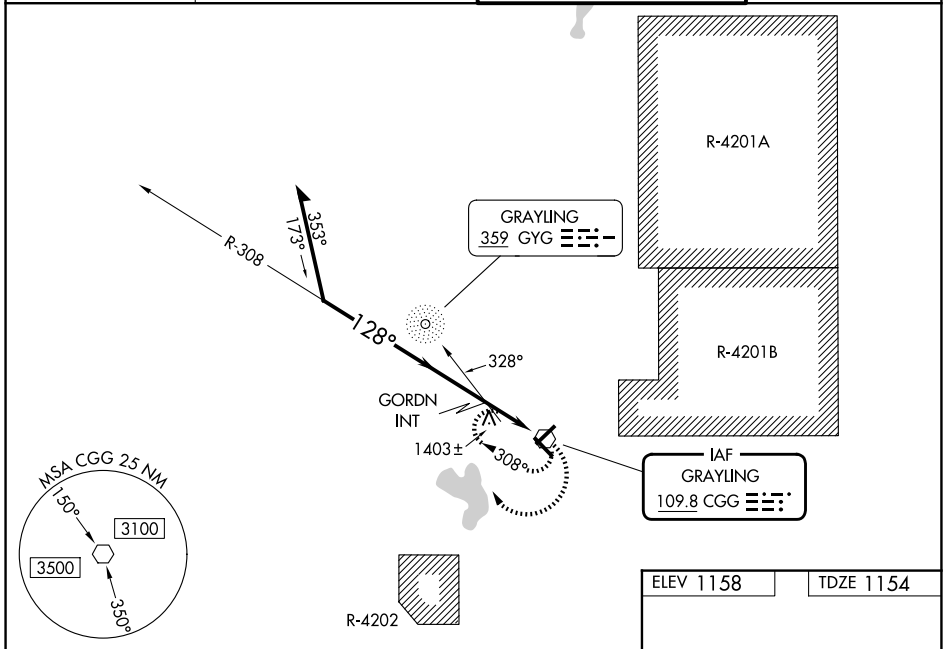
GRAYLING AAF (GOV)

RADAR required for procedure entry.

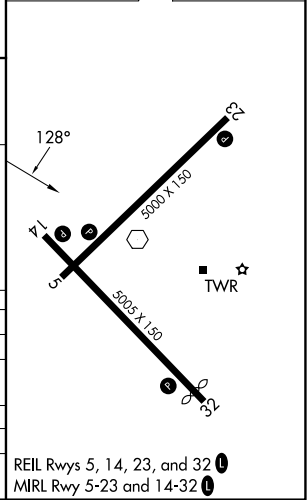
NA Circling Rwy 5, 23, 32 NA at night. Rwy 14 helicopter visibility reduction below 3/4 SM NA. When local altimeter setting not received, use Houghton Lake altimeter setting: increase all MDAs 60 feet and S-14 visibility Cat B 1/4 SM, Cats C and D 1/2 SM and Circling Cat B 1/4 SM, Cat C 1/2 SM, Cat D 1/4 SM and GORDN fix minimums: S-14 Cats C and D 1/4 SM and Circling Cat C and D visibility 1/4 SM.

MISSED APPROACH: Climbing right turn to 3500 in CGG VOR holding pattern.

ATIS 119.075	MINNEAPOLIS CENTER 125.475 269.45	GRAYLING TOWER ★ 124.65 (CTAF) 0	GND CON 121.9
------------------------	---	--	-------------------------



ELEV 1158	TDZE 1154
-----------	-----------



CATEGORY	A	B	C	D
S-14	1880-1	726 (800-1)	1880-2	726 (800-2)
CIRCLING	1880-1	722 (800-1)	1880-2 722 (800-2)	1960-2 1/2 802 (900-2 1/2)
GORDN FIX MINIMUMS (ADF REQUIRED)				
S-14	1660-1	506 (600-1)	1660-1 3/8	506 (600-1 3/8)
CIRCLING	1660-1 502 (600-1)	1720-1 562 (600-1)	1800-1 3/4 642 (700-1 3/4)	1960-2 1/2 802 (900-2 1/2)

REIL Rwys 5, 14, 23, and 32 0
MIRL Rwy 5-23 and 14-32 0

EC-1, 07 AUG 2025 to 04 SEP 2025

EC-1, 07 AUG 2025 to 04 SEP 2025