

WAAS CH <b>42939</b> <b>W22B</b>	APP CRS <b>213°</b>	Rwy Idg TDZE Apt Elev	<b>10000</b> <b>642</b> <b>645</b>
--	------------------------	-----------------------------	--

# RNAV (GPS) Y RWY 22R

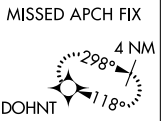
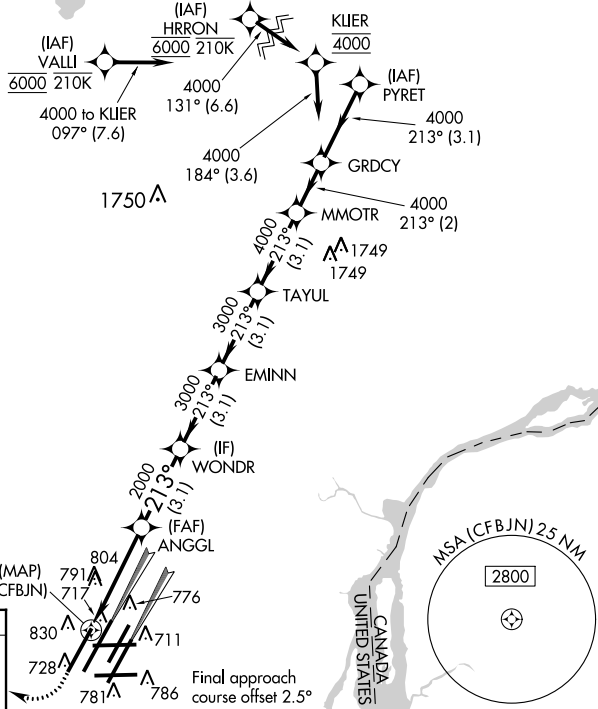
DETROIT METROPOLITAN WAYNE COUNTY (DTW)

▼ For uncompensated Baro-VNAV systems, LNAV/VNAV NA below -19°C (-2°F) or above 54°C (130°F). DME/DME RNP-0.3 NA. Simultaneous approach authorized. LNAV procedure NA during simultaneous operations. Use of FD or AP providing RNAV track guidance required during simultaneous operations.

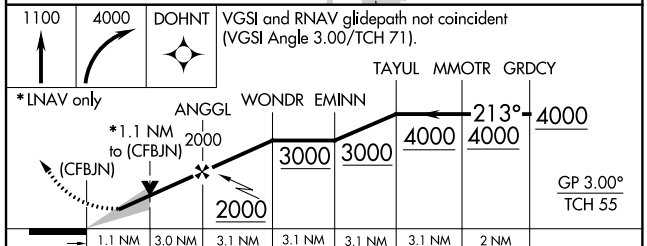
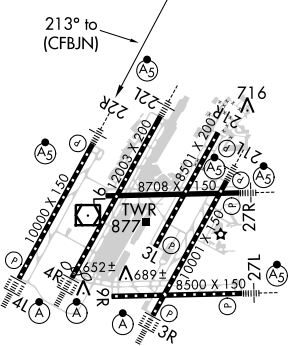
MALSRS  
MISSED APPROACH: Climb to 1100 then climbing right turn to 4000 direct DOHNT and hold.

D-ATIS <b>133.675</b>	DETROIT APP CON <b>124.05 284.0</b>	METRO TOWER <b>135.0 317.725</b>	GND CON <b>121.8</b> (NW) <b>119.45</b> (NE) <b>132.725</b> (SW) <b>119.25</b> (SE)	CLNC DEL <b>120.65</b>	CPDLC
--------------------------	--	-------------------------------------	---	---------------------------	-------

## RADAR REQUIRED



ELEV 645 TDZE 642



CATEGORY	A	B	C	D
LPV DA	892/24		250 (300-1/2)	
LNAV/VNAV DA	1050/45		408 (500-7/8)	
LNAV MDA	1060/24	418 (500-1/2)	1060/40	418 (500-3/4)
CIRCLING	1180-1	535 (600-1)	1180-1/2 535 (600-1/2)	1240-2 595 (600-2)

TDZ/CL Rwy 3R, 4L, 4R and 22R  
HIRL all runways  
REIL Rwy 3L, 9L, 9R and 21R

EC-1, 16 AUG 2018 to 13 SEP 2018

EC-1, 16 AUG 2018 to 13 SEP 2018