

WAAS CH <b>82439</b> <b>W04A</b>	APP CRS <b>038°</b>	Rwy Idg <b>10000</b> TDZE <b>645</b> Apt Elev <b>645</b>
--	------------------------	--

# RNAV (GPS) Y RWY 4L

DETROIT METROPOLITAN WAYNE COUNTY (DTW)

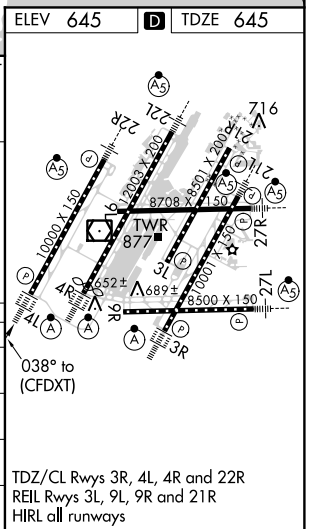
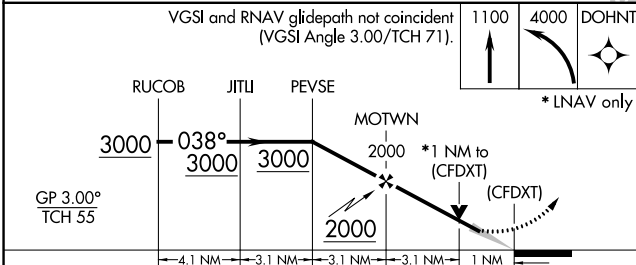
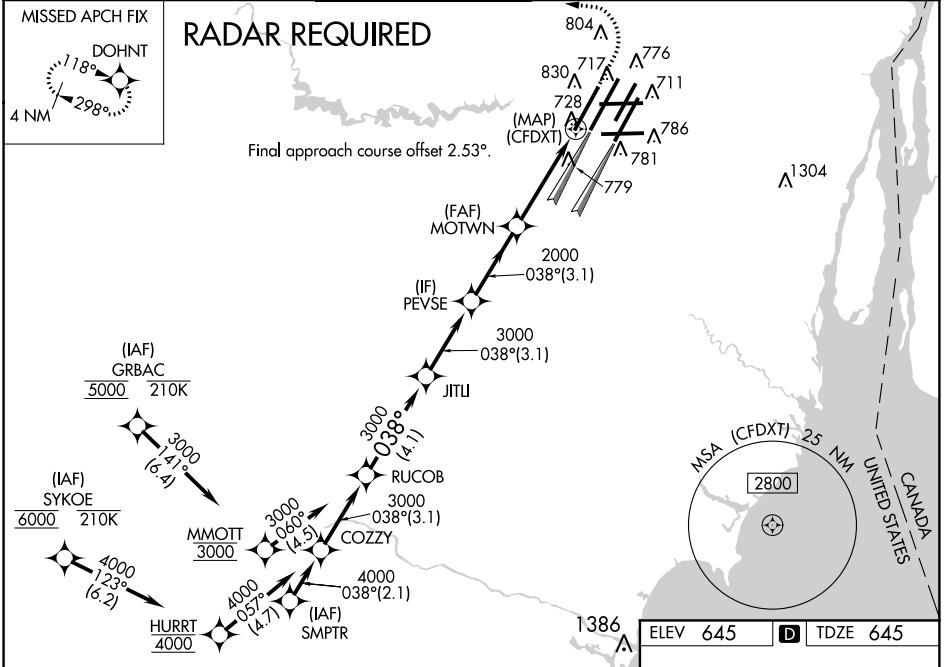
**▽** For uncompensated Baro-VNAV systems, LNAV/VNAV NA below -1°C (-2°F) or above 54°C (130°F). DME/DME RNP-0.3 NA. Simultaneous approach authorized. LNAV procedure NA during simultaneous operations. Use of FD or AP providing RNAV track guidance required during simultaneous operations.

ALSF-2



**MISSED APPROACH:**  
Climb to 1100 then climbing left turn to 4000 direct DOHNT and hold.

D-ATIS <b>133.675</b>	DETROIT APP CON <b>124.05 363.2</b> (WEST) <b>125.15 363.2</b> (EAST)	METRO TOWER <b>135.0 317.725</b>	GND CON <b>121.8</b> (NW) <b>119.45</b> (NE) <b>132.725</b> (SW) <b>119.25</b> (SE)	CLNC DEL <b>120.65</b>	CPDLC
--------------------------	---	-------------------------------------	---	---------------------------	-------



CATEGORY	A	B	C	D
LPV DA		895/24	250 (300-½)	
LNAV/VNAV DA		1068/45	423 (500-¾)	
LNAV MDA	1040/24	395 (400-½)	1040/35	395 (400-¾)
<b>C</b> CIRCLING	1180-1	535 (600-1)	1180-1½ 535 (600-1½)	1240-2 595 (600-2)

EC-1, 01 FEB 2018 to 01 MAR 2018

EC-1, 01 FEB 2018 to 01 MAR 2018