

DETROIT, MICHIGAN

AL-119 (FAA)

18144

RNAV (GPS) PRM Y RWY 4L (CLOSE PARALLEL)

DETROIT METROPOLITAN WAYNE COUNTY (DTW)

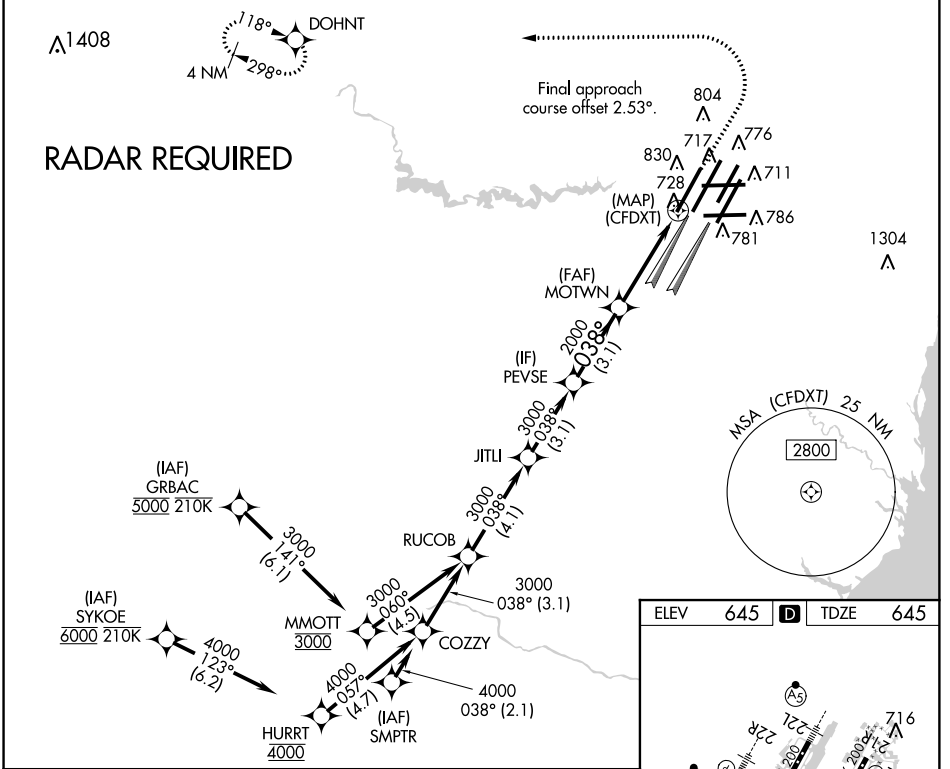
WAAS CH 82439 W04A	APP CRS 038°	Rwy ldg 10000 TDZE 645 Apt Elev 645
--	------------------------	--

▼ For uncompensated Baro-VNAV systems, LNAV/VNAV NA below -19°C (-2°F) or above 54°C (130°F). DME/DME RNP-0.3 NA. Use of FD or AP providing RNAV track guidance required during simultaneous operations. Simultaneous approach authorized. Dual VHF comm required. See additional requirements on AAUP.



MISSED APPROACH:
Climb to 1100 then climbing left turn to 4000 direct DOHNT and hold.

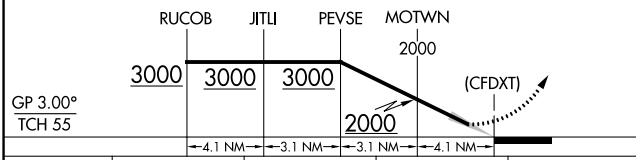
D-ATIS 133.675	DETROIT APP CON 124.05 284.0	METRO TOWER 135.0 317.725 PRM 127.05	GND CON 121.8 (NW) 119.45 (NE) 132.725 (SW) 119.25 (SE)	CLNC DEL 120.65	CPDLC
--------------------------	--	--	---	---------------------------	-------



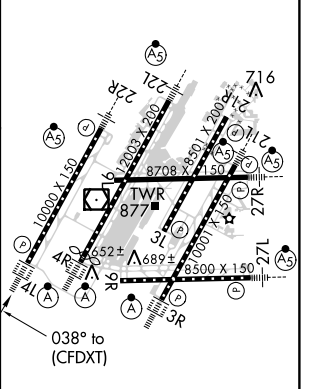
EC-1, 16 AUG 2018 to 13 SEP 2018

EC-1, 16 AUG 2018 to 13 SEP 2018

VGSI and RNAV glidepath not coincident (VGSI Angle 3.00/TCH 71).



ELEV 645	D	TDZE 645
----------	---	----------



TDZ/CL Rwy 3R, 4L, 4R and 22R
REIL Rwy 3L, 9L, 9R, and 21R
HIRL all runways

DETROIT, MICHIGAN
Orig 10NOV16

42°13'N-83°21'W

DETROIT METROPOLITAN WAYNE COUNTY (DTW)

RNAV (GPS) PRM Y RWY 4L (CLOSE PARALLEL)