

DETROIT, MICHIGAN

AL-119 (FAA)

RNAV (GPS) PRM RWY 22L (CLOSE PARALLEL)

DETROIT METROPOLITAN WAYNE COUNTY (DTW)

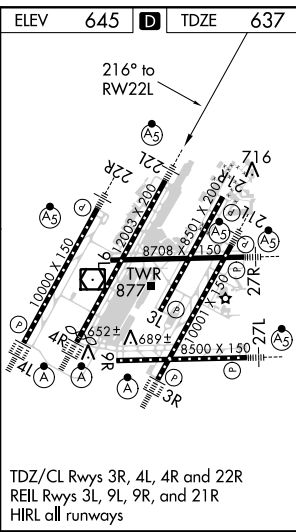
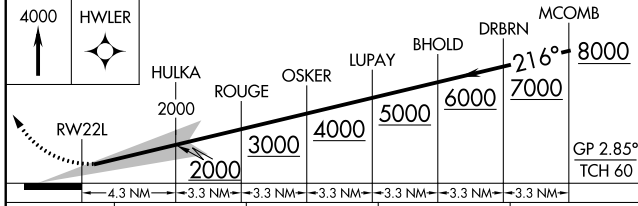
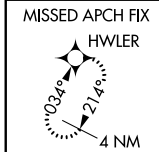
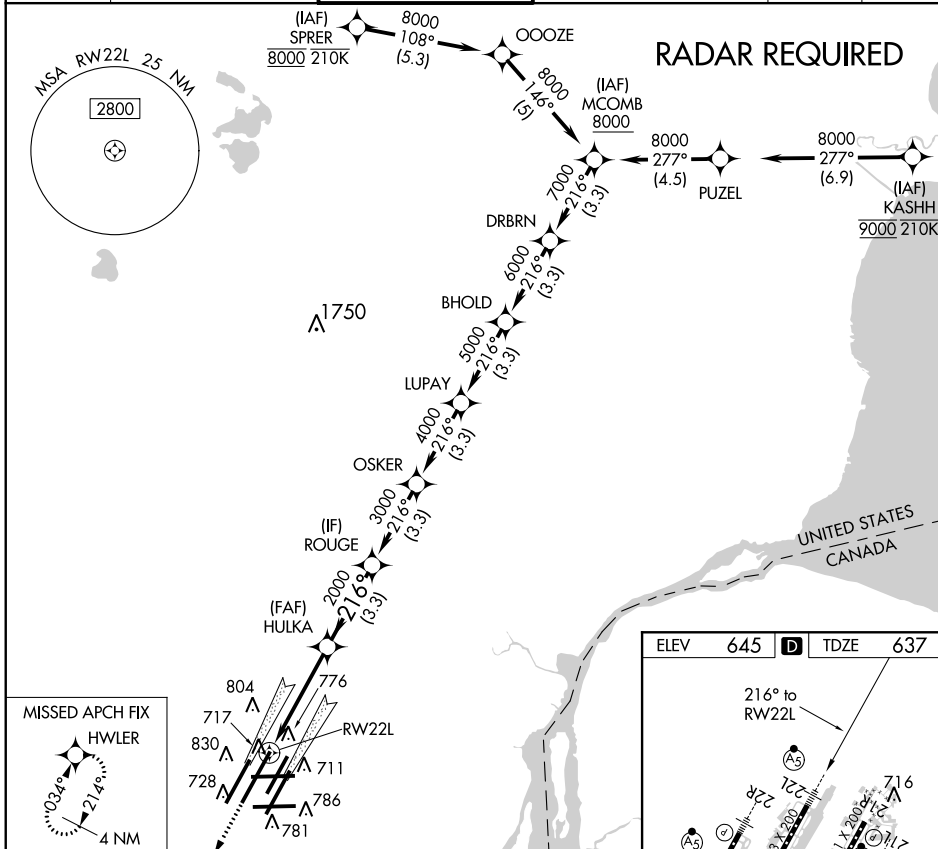
WAAS CH 99601 W22A	APP CRS 216°	Rwy Idg 12003
		TDZE 637
		Apt Elev 645

▼ For uncompensated Baro-VNAV systems, LNAV/VNAV NA below -10°C (14°F) or above 54°C (130°F). DME/DME RNP-0.3 NA. Use of FD or AP providing RNAV track guidance required during simultaneous operations. Simultaneous approach authorized. Dual VHF comm required. See additional requirements on AAUP.



MISSED APPROACH:
Climb to 4000 direct
HWLER and hold.

D-ATIS 133.675	DETROIT APP CON 124.05 363.2 (WEST) 125.15 363.2 (EAST)	METRO TOWER 128.125 317.725 PRM 135.775	GND CON 121.8 (NW) 119.45 (NE) 132.725 (SW) 119.25 (SE)	CLNC DEL 120.65	CPDLC
--------------------------	---	---	---	---------------------------	-------



CATEGORY	A	B	C	D
LPV DA		837/24	200 (200-½)	
LNAV/VNAV DA		938/24	301 (300-½)	

TDZ/CL Rws 3R, 4L, 4R and 22R
REIL Rws 3L, 9L, 9R, and 21R
HIRL all runways

EC-1, 01 FEB 2018 to 01 MAR 2018

EC-1, 01 FEB 2018 to 01 MAR 2018

DETROIT, MICHIGAN
Orig 10NOV16

42°13'N-83°21'W

DETROIT METROPOLITAN WAYNE COUNTY (DTW)

RNAV (GPS) PRM RWY 22L (CLOSE PARALLEL)