

DETROIT, MICHIGAN

AL-119 (FAA)

RNAV (GPS) PRM RWY 4R

(CLOSE PARALLEL)

DETROIT METROPOLITAN WAYNE COUNTY (DTW)

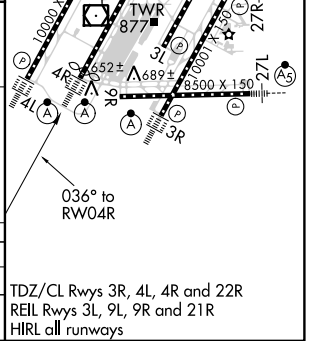
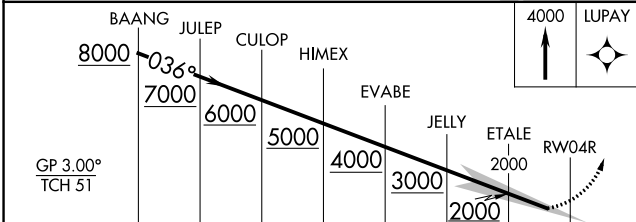
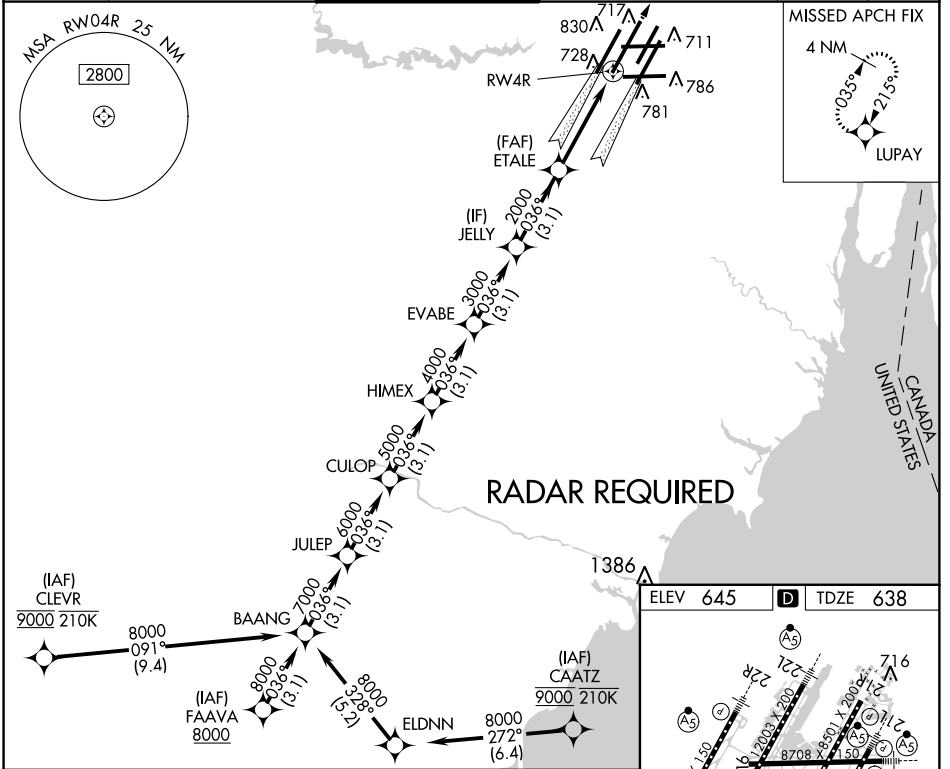
| | | |
|--|------------------------|--|
| WAAS CH 63004 W04B | APP CRS 036° | Rwy Idg 11494 TDZE 638 Apt Elev 645 |
|--|------------------------|--|

▼ For uncompensated Baro-VNAV systems, LNAV/VNAV NA below -19°C (-2°F) or above 54°C (130°F). DME/DME RNP-0.3 NA. Use of FD or AP providing RNAV track guidance required during simultaneous operations. Simultaneous approach authorized. Dual VHF comm required. See additional requirements on AAUP. For inoperative ALS, increase LNAV/VNAV all Cats visibility to RVR 4500.

ALSF-2

MISSED APPROACH:
Climb to 4000 direct LUPAY and hold.

| | | | | | |
|--------------------------|---|---|---|---------------------------|-------|
| D-ATIS 133.675 | DETROIT APP CON 124.05 363.2 (WEST) 125.15 363.2 (EAST) | METRO TOWER 128.125 317.725 PRM 135.775 | GND CON 121.8 (NW) 119.45 (NE) 132.725 (SW) 119.25 (SE) | CINC DEL 120.65 | CPDLC |
|--------------------------|---|---|---|---------------------------|-------|



| | | | | | | | |
|--------------|--------|--|-------------|--|---|--|---|
| CATEGORY | A | | B | | C | | D |
| LPV DA | 838/18 | | 200 (200-½) | | | | |
| LNAV/VNAV DA | 920/24 | | 282 (300-½) | | | | |
| | | TDZ/CL Rwy 3R, 4L, 4R and 22R REIL Rwy 3L, 9L, 9R and 21R HIRL all runways | | | | | |

DETROIT, MICHIGAN
Orig-A 17AUG17

42°13'N-83°21'W

DETROIT METROPOLITAN WAYNE COUNTY (DTW)

RNAV (GPS) PRM RWY 4R (CLOSE PARALLEL)

EC-1, 01 MAR 2018 to 29 MAR 2018

EC-1, 01 MAR 2018 to 29 MAR 2018