

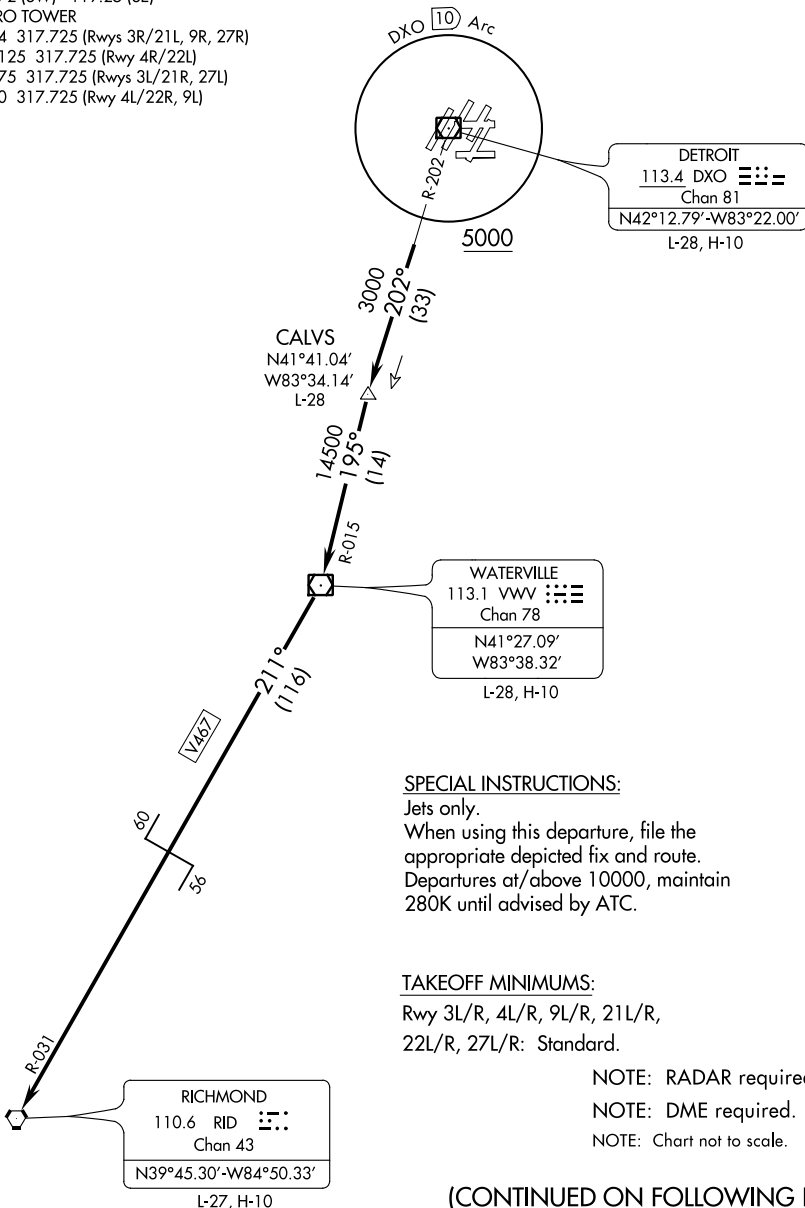
(RID8.RID) 17117

# RICHMOND EIGHT DEPARTURE

DETROIT METROPOLITAN WAYNE COUNTY (DTW)  
AL-119 (FAA) DETROIT, MICHIGAN

D-ATIS 133.675  
 CLNC DEL 120.65  
 CPDLC  
 GND CON  
 121.8 (NW) 119.45 (NE)  
 132.72 (SW) 119.25 (SE)  
 METRO TOWER  
 118.4 317.725 (Rwys 3R/21L, 9R, 27R)  
 128.125 317.725 (Rwy 4R/22L)  
 128.75 317.725 (Rwys 3L/21R, 27L)  
 135.0 317.725 (Rwy 4L/22R, 9L)

**TOP ALTITUDE:  
ASSIGNED BY ATC**



SPECIAL INSTRUCTIONS:

Jets only.  
 When using this departure, file the appropriate depicted fix and route.  
 Departures at/above 10000, maintain 280K until advised by ATC.

TAKEOFF MINIMUMS:

Rwy 3L/R, 4L/R, 9L/R, 21L/R,  
 22L/R, 27L/R: Standard.

- NOTE: RADAR required.
- NOTE: DME required.
- NOTE: Chart not to scale.

(CONTINUED ON FOLLOWING PAGE)

# RICHMOND EIGHT DEPARTURE

(RID8.RID) 10DEC15

DETROIT, MICHIGAN  
DETROIT METROPOLITAN WAYNE COUNTY (DTW)

EC-1, 01 FEB 2018 to 01 MAR 2018

EC-1, 01 FEB 2018 to 01 MAR 2018