

PALACE ONE DEPARTURE

SPECIAL INSTRUCTIONS:

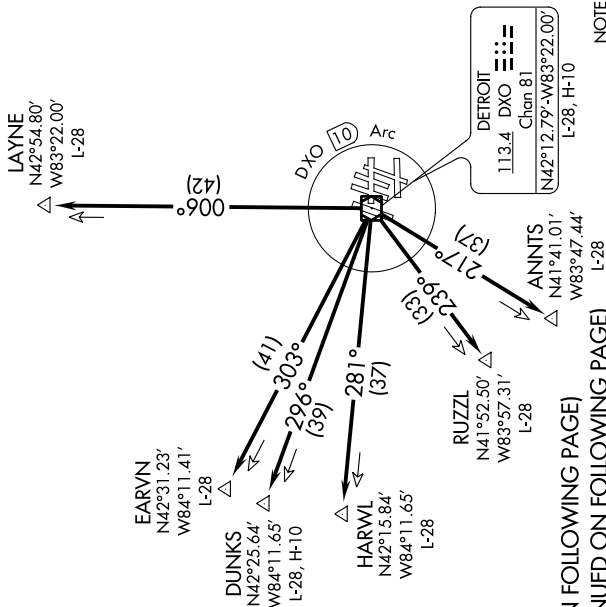
When using this departure, file the appropriate depicted departure fix and route. Aircraft landing/overflying Lansing (LAN) or overflying Flint (FNT) at 10000' or below, file via EARVN. Aircraft landing Flint (FNT) at 10000' or below, file via LAYNE. Aircraft landing/overflying Toledo (TOL) at 10000' or below, file via RUZZL. Aircraft over HARWL must file FL 220 and below. PROP AIRCRAFT departing Rwy21L/R and 22L/R westbound cross DXO 3.5 DME at or above 2500 MSL. If unable advise ATC prior to departure. Aircraft landing Cincinnati (CVG) must file via ANNTS. PROPS NA over ANNTS. JETS use DEP CON frequency 125.525. Props use DEP CON frequency 118.95. Turbojet departures at/above 10000, maintain 280K until advised by ATC.

D-ATIS 133.675
 CLNC DEL 120.65
 CPDLC
 GND CON
 121.8 (NW) 119.45 (NE)
 132.72 (SW) 119.25 (SE)

TAKEOFF MINIMUMS:

Rwys 3L/R, 4L/R, 9L/R, 21L/R,
 22L/R, 27L/R: Standard.

TOP ALTITUDE: ASSIGNED BY ATC.



(NARRATIVE ON FOLLOWING PAGE)
 (NOTES CONTINUED ON FOLLOWING PAGE)

NOTE: Chart not to scale.