

LOC/DME I-JKI 111.95 Chan 56 (Y)	APP CRS 216°	Rwy Ldg TDZE 642 Apt Elev 645	10000
--	------------------------	---	--------------

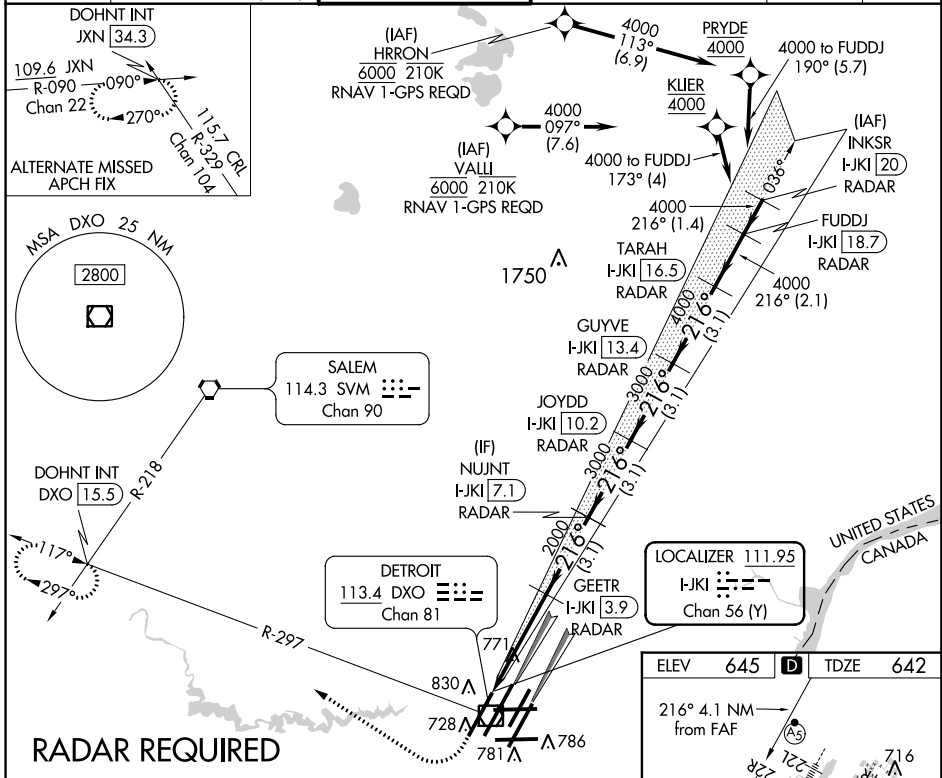
ILS Z or LOC RWY 22R

DETROIT METROPOLITAN WAYNE COUNTY (DTW)

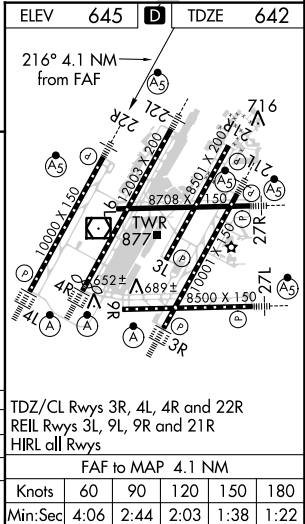
DME or RADAR required.
Simultaneous approach authorized.
**RVR 1800 authorized with use of FD or AP or HUD to DA.

MALSR MISSED APPROACH: Climb to 1100 then climbing right turn to 4000 on DXO VOR/DME R-297 to DOHNT INT/DXO 15.5 DME and hold.

D-ATIS 133.675	DETROIT APP CON 124.05 363.2 (WEST) 125.15 363.2 (EAST)	METRO TOWER 135.0 317.725	GND CON 121.8 (NW) 119.45 (NE) 132.725 (SW) 119.25 (SE)	CLNC DEL 120.65	CPDLC
--------------------------	---	-------------------------------------	---	---------------------------	-------



1100	4000	DXO R-297	DOHNT INT	VGSi and ILS glidepath not coincident (VGSi Angle 3.00/TCH 71).			
* LOC only.		GEETR I-JKI [3.9] RADAR	NUJNT I-JKI [7.1] RADAR	JOYDD I-JKI [10.2] RADAR	GUYVE I-JKI [13.4] RADAR	TARAH I-JKI [16.5] RADAR	FUDDJ I-JKI [18.7] RADAR
* I-JKI DME ANTENNA I-JKI [0.2]		I-JKI [0.9]	2000	3000	3000	4000	4000
1055		1.1 NM	3 NM	3.1 NM	3.1 NM	3.1 NM	2.1 NM
CATEGORY	A		B		C		D
S-ILS 22R	**842/24		200 (200-½)				
S-LOC 22R	1060/24	418 (500-½)		1060/40		418 (500-¾)	
CIRCLING	1180-1 535 (600-1)		1180-1½ 535 (600-1½)		1240-2 595 (600-2)		



ILS Z or LOC RWY 22R

EC-1, 26 APR 2018 to 24 MAY 2018

EC-1, 26 APR 2018 to 24 MAY 2018