

LOC/DME I-DWC 110.7 Chan 44	APP CRS 216°	Rwy Idg TDZE Apt Elev 12003 637 645
---	------------------------	---

ILS RWY 22L (SA CAT I)

DETROIT METRO WAYNE COUNTY (DTW)

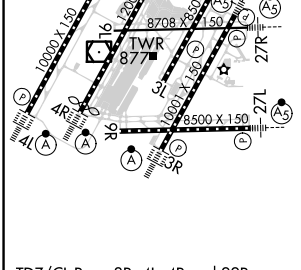
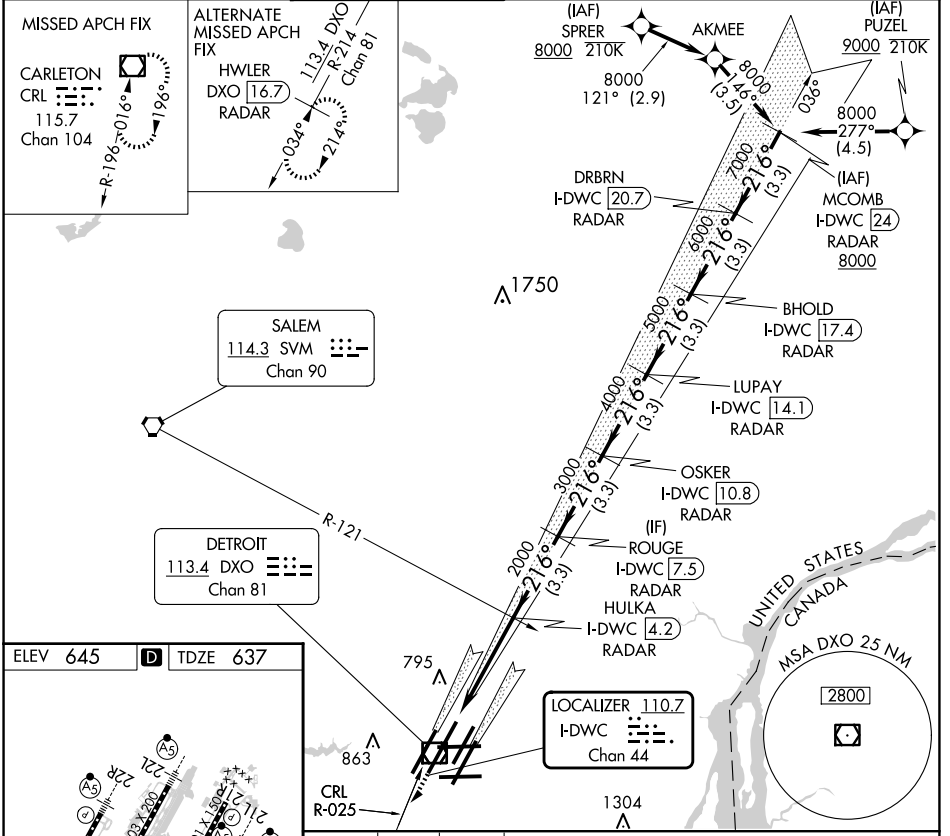
DME or RADAR required. RNAV 1-DME/DME/IRU or RADAR required for procedure entry.

Simultaneous approach authorized.
Requires specific OPSPEC, MSPEC, or LOA approval and use of HUD to DH.

MALS R (AS)

MISSED APPROACH: Climb to 4000 on heading 216° and CRL VOR/DME R-025 to CRL VOR/DME and hold, continue climb-in-hold to 4000.

D-ATIS 133.675	DETROIT APP CON 124.05 284.0	METRO TOWER 128.125 317.725	GND CON 121.8 (NW) 132.725 (SW)	119.45 (NE) 119.25 (SE)	CLNC DEL 120.65	CPDLC
--------------------------	--	---------------------------------------	---	--	---------------------------	-------



4000	CRL R-025	CRL	OSKER I-DWC 10.8 RADAR	LUPAY I-DWC 14.1 RADAR	BHOLD I-DWC 17.4 RADAR	DRBRN I-DWC 20.7 RADAR	MCOMB I-DWC 24 RADAR
2000	HULKA I-DWC 4.2 RADAR	ROUGE I-DWC 7.5 RADAR	216°-8000	6000	7000	GS 2.85°	TCH 60
4.3 NM	3.3 NM	3.3 NM	3.3 NM	3.3 NM	3.3 NM		
CATEGORY	A	B	C	D			
S-ILS 22L	SA CAT I		RA 148/14	150 DA 787			

SA CATEGORY I ILS- SPECIAL AIRCREW & AIRCRAFT CERTIFICATION REQUIRED

EC-1, 15 MAY 2025 to 12 JUN 2025

EC-1, 15 MAY 2025 to 12 JUN 2025