


ILS PRM RWY 22L (CLOSE PARALLEL)

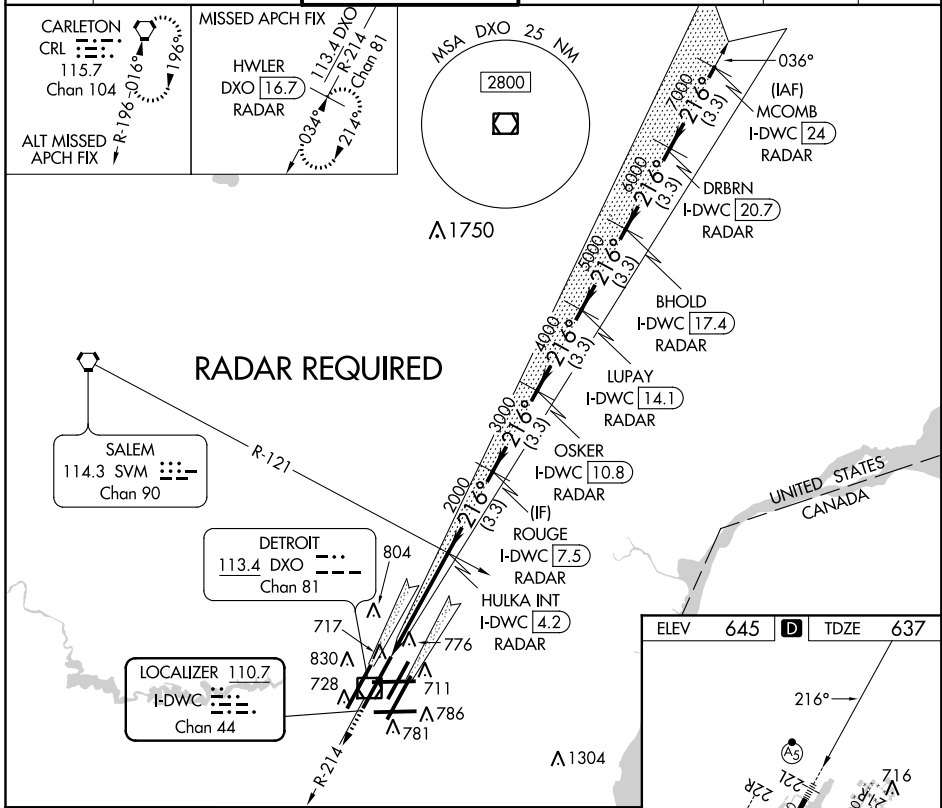
DETROIT METROPOLITAN WAYNE COUNTY (DTW)

LOC/DME I-DWC 110.7 Chan 44	APP CRS 216°	Rwy Idg 12003 TDZE 637 Apt Elev 645
---	------------------------	--

▽ DME or RADAR required. Simultaneous approach authorized.
Procedure NA when glide slope not available.
Dual VHF comm required. See additional requirements on AAUP.
** RVR 1800 authorized with use of FD or AP or HUD to DA.

MALSR  MISSED APPROACH: Climb to 4000 on DXO R-214 to HWLER/DXO VOR/DME 16.7 DME/RADAR and hold.

D-ATIS 133.675	DETROIT APP CON 124.05 363.2 (WEST) 125.15 363.2 (EAST)	METRO TOWER 128.125 317.725 PRM 135.775	GND CON 121.8 (NW) 119.45 (NE) 132.725 (SW) 119.25 (SE)	CLNC DEL 120.65	CPDLC
--------------------------	---	---	---	---------------------------	-------



4000	DXO R-214	HWLER DXO 16.7 RADAR	ROUGE I-DWC 7.5 RADAR	OSKER I-DWC 10.8 RADAR	LUPAY I-DWC 14.1 RADAR	BHOLD I-DWC 17.4 RADAR	DRBRN I-DWC 20.7 RADAR	MCOMB I-DWC 24 RADAR
I-DWC DME ANTENNA		HULKA INT I-DWC 4.2 RADAR						
	4.3 NM	3.3 NM	3.3 NM	3.3 NM	3.3 NM	3.3 NM	3.3 NM	
CATEGORY	A		B		C		D	
S-ILS 21L			** 837/24		200 (200-1/2)			

