

ILS PRM RWY 4R (CLOSE PARALLEL)

DETROIT METROPOLITAN WAYNE COUNTY (DTW)

LOC/DME I-DTW 110.7	APP CRS 036°	Rwy Idg 11494
Chan 44		TDZE 640
		Apt Elev 645

RNAV 1-GPS.

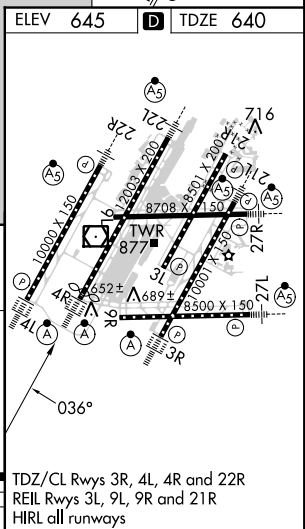
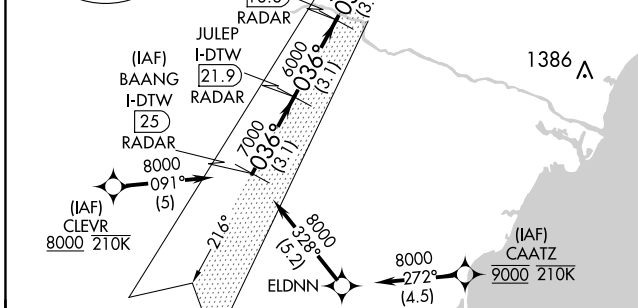
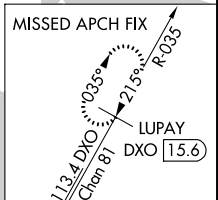
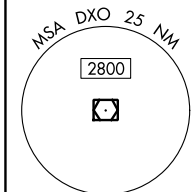
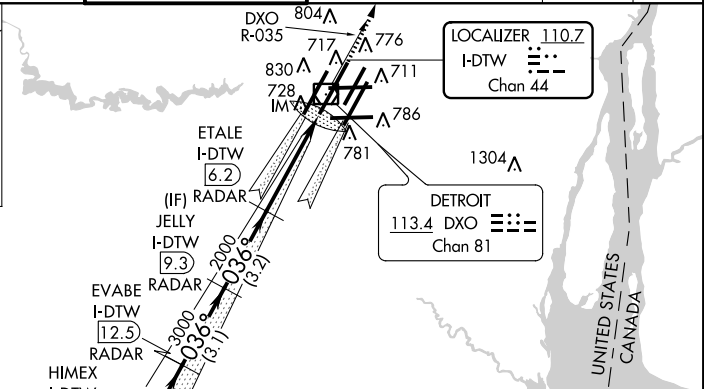
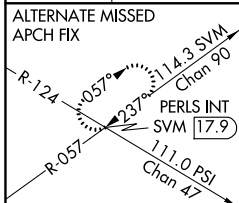
DME or RADAR required. CLEVR, CAATZ and ELDNN: RNAV 1-DME/DME/IRU or GPS required. Aircraft not DME/DME/IRU or GPS equipped- RADAR required for procedure entry.

ALSF-2

MISSED APPROACH:
Climb to 4000 on DXO
VOR/DME R-035 to
LUPAY/DXO VOR/DME
15.6 DME and hold.

Simultaneous approach authorized. Use of FD or AP required during simultaneous operations. Dual VHF Comm required. See additional requirements on AAUP. Procedure NA when glideslope NA.

D-ATIS 133.675	DETROIT APP CON 124.05 284.0	METRO TOWER 128.125 317.725 PRM 135.775	GND CON 121.8 (NW) 119.45 (NE) 132.725 (SW) 119.25 (SE)	CLNC DEL 120.65	CPDLC
--------------------------	--	---	---	---------------------------	-------



BAANG I-DTW 25 RADAR	JULEP I-DTW 21.9 RADAR	CULOP I-DTW 18.8 RADAR	HIMEX I-DTW 15.6 RADAR	EVABE I-DTW 12.5 RADAR	JELLY I-DTW 9.3 RADAR	ETALE I-DTW 6.2 RADAR	DXO R-035	LUPAY DXO 15.6
8000	7000	6000	5000	4000	3000	2000	4000	2000
3.1 NM	3.1 NM	3.1 NM	3.1 NM	3.1 NM	3.2 NM	4 NM	0.1 NM	
CATEGORY A		CATEGORY B		CATEGORY C		CATEGORY D		
S-ILS 4R		840/18		200 (200-1/2)				

TDZ/CL Rwy 3R, 4L, 4R and 22R
REIL Rwy 3L, 9L, 9R and 21R
HIRL all runways

EC-1, 16 AUG 2018 to 13 SEP 2018

EC-1, 16 AUG 2018 to 13 SEP 2018