

(FWA7.FWA) 17117

FORT WAYNE SEVEN DEPARTURE

DETROIT METROPOLITAN WAYNE COUNTY (DTW)
AL-119 (FAA) DETROIT, MICHIGAN

D-ATIS 133.675
 CLNC DEL 120.65
 CPDLC
 GND CON
 121.8 (NW) 119.45 (NE)
 132.72 (SW) 119.25 (SE)
 METRO TOWER
 118.4 317.725 (Rwys 3R/21L, 9R, 27R)
 128.125 317.725 (Rwy 4R/22L)
 128.75 317.725 (Rwys 3L/21R, 27L)
 135.0 317.725 (Rwy 4L/22R, 9L)

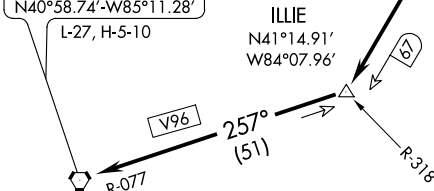
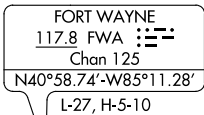
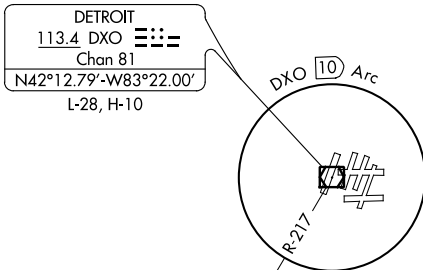
**TOP ALTITUDE:
ASSIGNED BY ATC**

TAKEOFF MINIMUMS:

Rwys 3L/R, 4L/R, 9L/R,
21L/R, 22L/R, 27L/R: Standard.

SPECIAL INSTRUCTIONS:

Jets only. When using this departure, file the appropriate depicted fix and route. Departures at/above 10000, maintain 280K until advised by ATC.



NOTE: Radar required.

NOTE: Chart not to scale.

(NARRATIVE ON FOLLOWING PAGE)

FORT WAYNE SEVEN DEPARTURE

(FWA7.FWA) 27APR17

DETROIT, MICHIGAN
DETROIT METROPOLITAN WAYNE COUNTY (DTW)

EC-1, 01 MAR 2018 to 29 MAR 2018

EC-1, 01 MAR 2018 to 29 MAR 2018