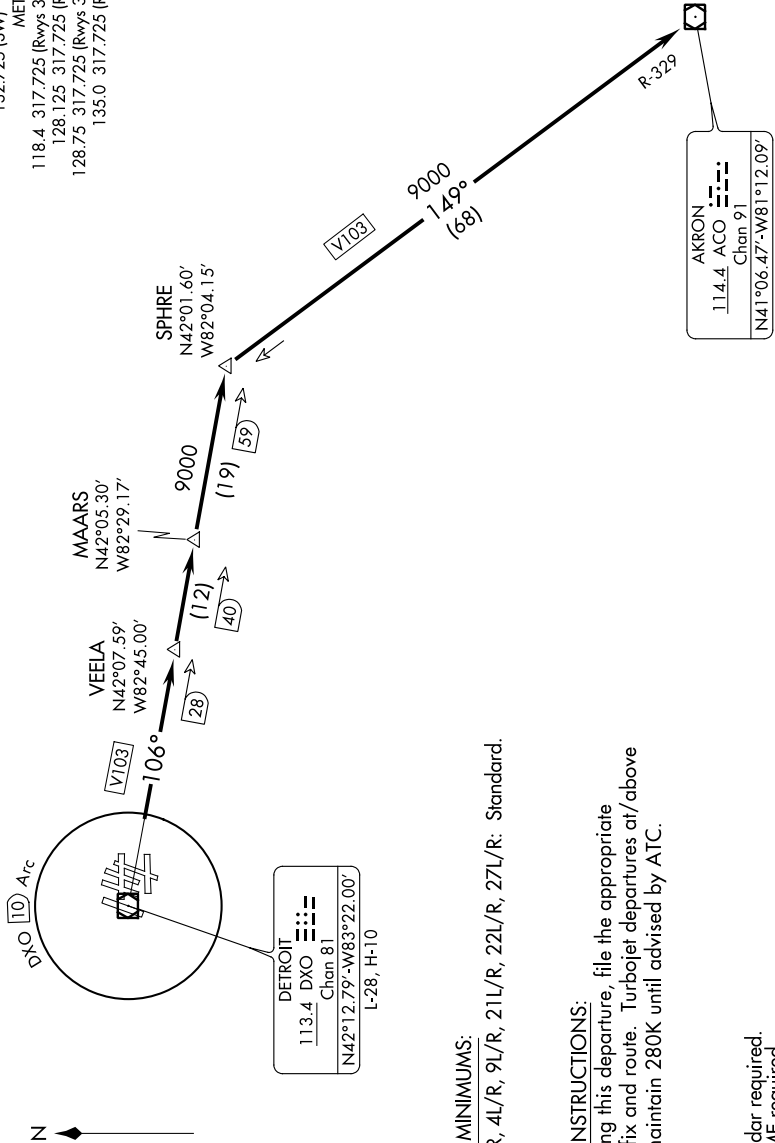


# AKRON FIVE DEPARTURE

AL-119 (FAA)

DETROIT, MICHIGAN

D-ATIS 118.125  
 CLNC DEL 120.65  
 CPDLC  
 GND.CON  
 121.8 (NW) 119.45 (NE)  
 132.725 (SW) 119.25 (SE)  
 METRO TOWER  
 118.4 317.725 (Rwys 3R/21L, 27R)  
 128.125 317.725 (Rwy 4R/22L)  
 128.75 317.725 (Rwys 3L/21R, 27L)  
 135.0 317.725 (Rwy 4L/22R)



**TOP ALTITUDE:  
ASSIGNED BY ATC**

DETROIT  
 113.4 DXO  
 Chan 81  
 N42°12'79"-W83°22'00"  
 L-28, H-10

AKRON  
 114.4 ACO  
 Chan 91  
 N41°06'47"-W81°12'09"  
 L-30, H-10

**TAKEOFF MINIMUMS:**  
 Rwys 3L/R, 4L/R, 9L/R, 21L/R, 22L/R, 27L/R: Standard.

**SPECIAL INSTRUCTIONS:**  
 When using this departure, file the appropriate depicted fix and route. Turbojet departures at/above 10000, maintain 280K until advised by ATC.

**NOTE:** Radar required.  
**NOTE:** DME required  
**NOTE:** Chart not to scale.

(NARRATIVE ON FOLLOWING PAGE)

EC-1, 16 AUG 2018 to 13 SEP 2018

EC-1, 16 AUG 2018 to 13 SEP 2018