
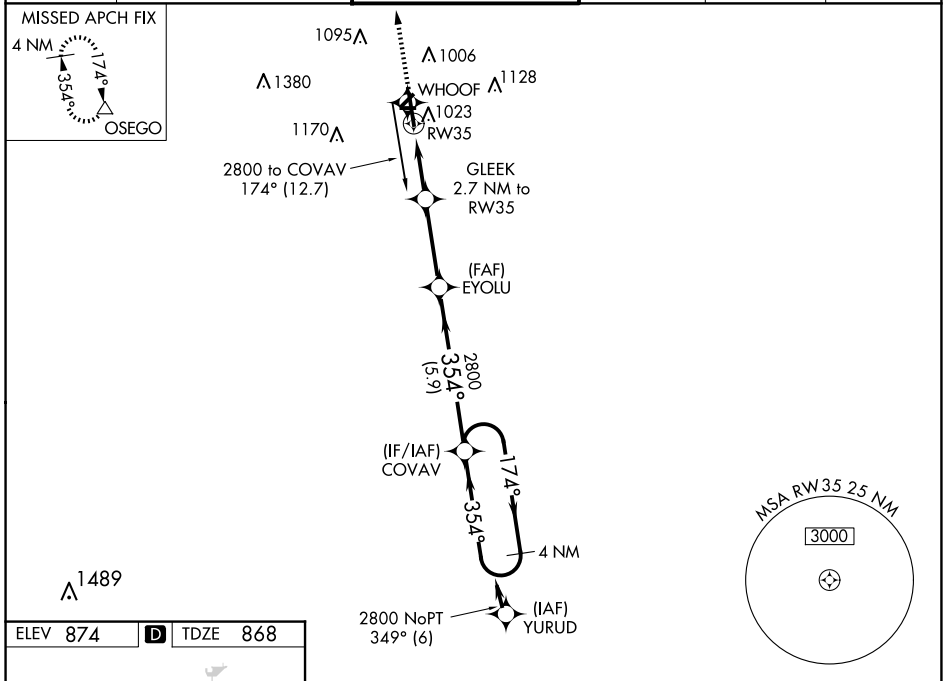


WAAS CH 61102 W35A	APP CRS 354°	Rwy Idg 6502 TDZE 868 Apt Elev 874
--	------------------------	---

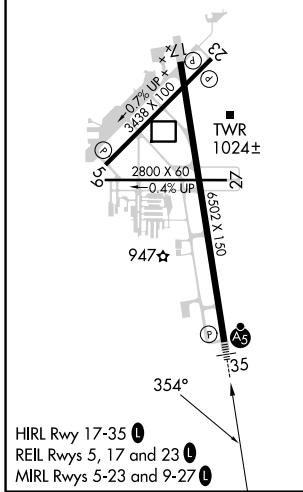
RNAV (GPS) RWY 35

KALAMAZOO/BATTLE CREEK INTL (AZO)

RNP APCH.		KALAMAZOO TOWER * 118.3 (CTAF) 0 257.875		GND CON 121.9	CLNC DEL 121.75	UNICOM 122.95
<p>▽ For uncompensated Baro-VNAV systems, LNAV/VNAV NA below -19°C or above 54°C. Circling Rwy 5, 9, 17, 23, 27 NA at night. **RVR 1800 authorized with use of FD or AP or HUD to DA.</p>		<p>MALS R</p> 		<p>MISSED APPROACH: Climb to 3000 direct OSEGO and hold.</p>		
ATIS 127.25	GREAT LAKES APP CON * 121.2 239.25					



ELEV 874	D	TDZE 868
----------	----------	----------



3000	OSEGO	4 NM Holding Pattern	
* LNAV only.		GLEEK 2.7 NM to RW35	EYOLU
* 1.1 NM to RW35		* 1780	COVAV
RW35		2800	2800
1.1		1.6 NM	3.2 NM
		5.9 NM	
GP 3.00° TCH 53			
CATEGORY	A	B	C
LPV DA **	1068/24		200 (200-½)
LNAV/VNAV DA	1264/35		396 (400-¾)
LNAV MDA	1280/24	412 (500-½)	1280/40 412 (500-¾)
C CIRCLING	1380-1	506 (600-1)	1480-1¾ 606 (700-1¾) 1480-2 606 (700-2)

EC-1, 15 MAY 2025 to 12 JUN 2025

EC-1, 15 MAY 2025 to 12 JUN 2025