

OSCEOLA

L O SIMENSTAD MUNI (OEO)(KOE) O SE UTC-6(-5DT) N45°18.56' W92°41.41'

GREEN BAY
H-2I, L-14I, A
IAP

906 B NOTAM FILE OEO

RWY 10-28: H5006X75 (ASPH) S-20, D-30 MIRL 0.4% up E

RWY 10: PAPI(P2L)—GA 3.0° TCH 35'. Road.

RWY 28: REIL. PAPI(P4L)—GA 3.0° TCH 37'. Trees.

RWY 04-22: 2192X150 (TURF)

RWY 04: Trees.

RWY 22: Trees.

SERVICE: S4 **FUEL** 100LL, JET A **LGT** MIRL Rwy 10-28 preset on low ints dusk to dawn to incr ints **ACTIVATE** PAPI Rwy 10 and Rwy 28 and REIL Rwy 28—CTAF.

AIRPORT REMARKS: Attended Mon-Fri 1500-2200Z†. Self svc fuel avbl 24 hrs. Glider and ultralight activity on and infov arpt. Deer and birds on and infov arpt. Rwy 04-22 **CLOSED** to wheeled acft when covered with snow or ice; open to ski equipped acft during winter months. Ctc arpt manager 612-308-0647. Avoid overflight of St. Croix River National Scenic Bi-way blo 2000' AGL. Rwy 04-22 marked with yellow cones.

AIRPORT MANAGER: 715-294-4500

WEATHER DATA SOURCES: AWOS-3 119.925 (715) 294-3845.

COMMUNICATIONS: CTAF 122.9

® **MINNEAPOLIS APP/DEP CON** 121.2

GCO 121.725 (MSP CD and FLIGHT SERVICES)

RADIO AIDS TO NAVIGATION: NOTAM FILE PNM.

GOPHER (H) VORTACW 117.3 **GEP** Chan 120 N45°08.74' W93°22.39' 065° 30.6 NM to fld. 877/6E. **HIWAS.**



OSHKOSH

WITTMAN RGNL (OSH)(KOSH) P (ARNG) 2 S UTC-6(-5DT) N43°59.07' W88°33.42'

CHICAGO
H-2K, L-28H
IAP, AD

808 B NOTAM FILE OSH

RWY 18-36: H8002X150 (CONC-GRVD) S-65, D-85, 2S-107, 2D-130 HIRL

RWY 18: REIL. PAPI(P4L)—GA 3.0° TCH 47'. RVR-R Antenna.

RWY 36: MALSR. PAPI(P4L)—GA 3.0° TCH 52'. RVR-T 0.3% down.

RWY 09-27: H6179X150 (CONC-GRVD) S-75, D-125, 2S-159, 2D-185 HIRL 0.4% up W

RWY 09: PAPI(P4L)—GA 3.0° TCH 50'. Pole.

RWY 27: REIL. PAPI(P4L)—GA 3.0° TCH 47'. Thld dsplcd 531'. Pole.

RWY 05-23: H3697X75 (ASPH) AUW-50 0.4% up SW

RWY 05: Pole.

RWY 23: Thld dsplcd 274'. Pole.

RWY 13-31: H3061X75 (ASPH) AUW-50

RWY 13: Tree.

RWY 31: Pole.

RUNWAY DECLARED DISTANCE INFORMATION

RWY 09: TORA-6179 TODA-6179 ASDA-5648 LDA-5648

RWY 27: TORA-6179 TODA-6179 ASDA-6179 LDA-5648

SERVICE: S4 **FUEL** 100LL, JET A+ **OX** 1, 2 **LGT** When twr clsd VASI Rwy 09 on and HIRL Rwy 18-36 preset on medium ints, to increase ints and **ACTIVATE** HIRL Rwy 09-27, PAPI Rwy 27, MALSR Rwy 36, HIRL Rwy 18-36 —CTAF.

MILITARY— FUEL A+ (avbl 1300-0100Z† Mon-Fri, 1300-0000Z† Sat-Sun. OT 2 hr PN, C920-236-7827.) (NC-100LL)

AIRPORT REMARKS: Attended 1300-0200Z†. For arpt attendant other hrs call 920-236-7827. Jet A+ avbl 1300-0100Z† Mon-Fri, 1400-2300Z† Sat-Sun. Call 920-236-7827, after hours fee \$50. Birds on and infov arpt. Rws 13-31 and Rwy 05-23, Twys C, H & P not avbl to air carrier with more than 30 passenger seats. Rwy 23 and Rwy 27 apch ends are closely aligned, verify correct rwy and compass heading prior to departure. Rws 05-23 & 13-31 maximum weight bearing capacity for any acft is 50,000 lbs.

AIRPORT MANAGER: 920-236-4930

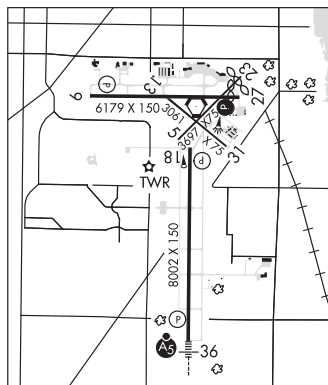
WEATHER DATA SOURCES: ASOS (920) 426-1644 LAWRS.

COMMUNICATIONS: CTAF 118.5 ATIS 125.9 **UNICOM** 122.95

RCO 122.1R 122.25 111.8T (GREEN BAY RADIO)

® **MILWAUKEE APP/DEP CON** 127.0

OSHKOSH TOWER 118.5 (1200-0400Z†) **GND CON** 132.3



CONTINUED ON NEXT PAGE

CONTINUED FROM PRECEDING PAGE

AIRSPACE: CLASS D svc 1200–0400Z† other times CLASS G.

RADIO AIDS TO NAVIGATION: NOTAM FILE OSH.

OSHKOSH (L) VORTAC 111.8 OSH Chan 55 N43°59.43' W88°33.36' at fld. 781/2E.

VORTAC unusable:

196°–234° byd 37 NM blo 2,400'

TACAN AZIMUTH unusable:

166°–174° byd 10 NM

POBER NDB (LOMW) 395 OS N43°52.43' W88°33.46' 003° 6.6 NM to fld. 851/3W.

ILS 110.5 I-OSH Rwy 36. Class IA. LOM POBER NDB. ILS unmonitored when ATCT clsd. LOM/OM unmonitored.

Localizer backcourse unusable byd 20° right of course.

PALMYRA MUNI (88C) 0 NW UTC–6(–5DT) N42°53.01' W88°36.00'

CHICAGO

851 NOTAM FILE GRB

RWY 09–27: 2800X200 (TURF) LIRL

RWY 09: Tree.

RWY 27: Tree.

SERVICE: LGT ACTIVATE LIRL Rwy 09–27—CTAF.

AIRPORT REMARKS: Unattended. Crane 190' AGL 300' south of AER 09 SR–SS. Rwy 09–27 marked by yellow cones.

AIRPORT MANAGER: (262) 903-6510

COMMUNICATIONS: CTAF 122.9

PARK FALLS MUNI (PKF)(KPKF) 2 NE UTC–6(–5DT) N45°57.31' W90°25.47'

GREEN BAY

1501 B NOTAM FILE GRB

L–141

RWY 18–36: H3200X60 (ASPH) S–20 MIRL

IAP

RWY 18: PAPI(P2L)—GA 3.75° TCH 38'. Trees.

RWY 36: PAPI(P2L)—GA 3.0° TCH 27'. Trees.

SERVICE: FUEL 100LL LGT ACTIVATE MIRL Rwy 18–36; PAPI Rwy 18–36—CTAF.

AIRPORT REMARKS: Attended irregularly. 24 hr self svc fuel with credit card.

Arpt surface cond not reported. Wildlife hazard, deer/birds near movement areas.

AIRPORT MANAGER: 715-762-3971

COMMUNICATIONS: CTAF 122.9

Ⓜ **MINNEAPOLIS CENTER APP/DEP CON** 133.65

RADIO AIDS TO NAVIGATION: NOTAM FILE IWD.

IRONWOOD (L) VORTACW 108.8 IWD Chan 25 N46°31.94'

W90°07.55' 199° 36.8 NM to fld. 1229/1E. HIWAS.

DME unusable:

010°–020°

021°–103° byd 35 NM blo 3,700'

104°–134° byd 25 NM blo 5,000'

135°–195° byd 25 NM blo 8,000'

196°–244° byd 25 NM blo 5,000'

290°–009° byd 35 NM blo 3,700'

TACAN azimuth shutdown, TACAN DME operational

NDB (MHW) 371 PKF N45°57.19' W90°25.58' at fld. 1496/1W. NOTAM FILE GRB. NDB unmonitored.

NDB OTS indef

