

HUNTSVILLE

HUNTSVILLE EXECUTIVE AIRPORT TOM SHARP JR FLD (MDQ)(KMDQ) 1 NE UTC-6(-5DT)

ATLANTA
H-6K, 9A, L-16J
IAP

N34°51.56' W86°33.45'

764 B NOTAM FILE MDQ

Rwy 18-36: H6500X100 (ASPH-GRVD) S-60, D-75, 2D-140 MIRL
0.7% up S

Rwy 18: REIL. PAPI(P4L)—GA 3.0° TCH 40'.

Rwy 36: REIL. PAPI(P4L)—GA 3.0° TCH 40'. Rgt tfc.

SERVICE: S4 FUEL 100LL, JET A OX2 LGT ACTIVATE REIL Rwy 18 and Rwy 36; PAPI Rwy 18 and Rwy 36 and MIRL Rwy 18-36—CTAF.

AIRPORT REMARKS: Attended Mon-Fri 1330-0330Z, Sat-Sun 1330-0200Z. For svc after hrs call 256-603-9345.

AIRPORT MANAGER: 256-828-1403

WEATHER DATA SOURCES: AWOS-3PT 120.000 (256) 829-1242.

COMMUNICATIONS: CTAF/UNICOM 123.0

Ⓡ **HUNTSVILLE APP/DEP CON** 125.6 (1200-0600Z)

MEMPHIS CENTER APP/DEP CON 120.8 (0600-1200Z)

GCO 121.725 (HUNTSVILLE APCH)

RADIO AIDS TO NAVIGATION: NOTAM FILE ANB.

ROCKET (L) VORTACW 112.2 RQZ Chan 59 N34°47.83'
W86°38.03' O43° 5.3 NM to fld. 1198/2E.

TACAN AZIMUTH unusable:

000°-024° byd 20 NM blo 4,000'

025°-089° byd 6 NM

090°-159° byd 20 NM blo 3,500'

308°-315° byd 8.0 NM

316°-359° byd 20 NM blo 3,500'

DME unusable:

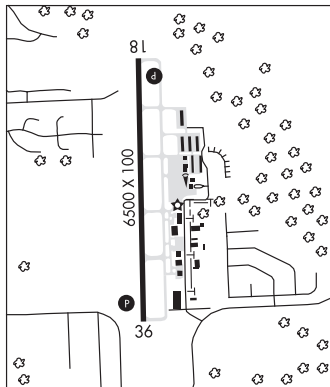
000°-024° byd 20 NM blo 4,000'

025°-089° byd 6 NM blo 5,500'

090°-159° byd 20 NM blo 3,500'

316°-359° byd 20 NM blo 3,500'

ILS/DME 109.75 I-MDQ Chan 34(Y) Rwy 18. Class IT.



HUNTSVILLE INTL-CARL T JONES FLD (HSV)(KHSV) 9 SW UTC-6(-5DT) N34°38.23'

ATLANTA
H-6K, 9A, L-18H
IAP, AD

W86°46.50'

629 B LRA Class I, ARFF Index C NOTAM FILE HSV

Rwy 18R-36L: H12600X150 (ASPH-GRVD) S-120, D-250, 2S-175,
2D-550 PCN 71 F/A/X/T HIRL CL

Rwy 18R: ALSF2. TDZL. RVR-TMR Rgt tfc.

Rwy 36L: MALSR. TDZL. RVR-TMR

Rwy 18L-36R: H10006X150 (ASPH-GRVD) S-120, D-250, 2S-175,
2D-550 PCN 105F/B/W/T HIRL

Rwy 18L: MALSR. PAPI(P4R)—GA 3.0° TCH 73'. RVR-TR

Rwy 36R: MALSR. PAPI(P4R)—GA 3.0° TCH 72'. RVR-TR Thld dsplcd
206'. Rgt tfc.

RUNWAY DECLARED DISTANCE INFORMATION

Rwy 18L: TORA-10006 TODA-10006 ASDA-9800 LDA-9800

Rwy 18R: TORA-12600 TODA-12600 ASDA-12600 LDA-12600

Rwy 36L: TORA-12600 TODA-12600 ASDA-12600 LDA-12600

Rwy 36R: TORA-10006 TODA-10006 ASDA-10006 LDA-9800

SERVICE: S4 FUEL 100LL, JET A OX1, 2, 3, 4 LGT When twr clsd,
ALSF-2 Rwy 18R on step 2. ACTIVATE HIRL Rwy 18R-36L and Rwy
18L-36R, MALSR Rwy 18L, Rwy 36L, and Rwy 36R—CTAF.

AIRPORT REMARKS: Attended continuously. Line up and wait not authorized.
Int of Twy J and svc road are unct. Flight Notification Service (ADCUS)
avbl.

AIRPORT MANAGER: 256-772-9395

WEATHER DATA SOURCES: ASOS (256) 772-8074 WSP

COMMUNICATIONS: CTAF 127.6 ATIS 121.25 UNICOM 122.95

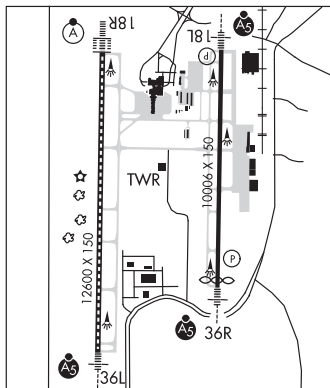
RCO 122.2 (ANNISTON RADIO)

Ⓡ **APP/DEP CON** 118.05 (180°-359°) 125.6 (360°-179°) (1200-0600Z)

MEMPHIS CENTER APP/DEP CON 120.8 (0600-1200Z)

TOWER 127.6 (1200-0600Z) **GND CON** 121.9 **CLNC DEL** 120.35 (1300-0500Z)

AIRSPACE: CLASS C svc ctc **APP CON** svc 1200-0600Z other times CLASS E.



CONTINUED ON NEXT PAGE

CONTINUED FROM PRECEDING PAGE

VOR TEST FACILITY (VOT) 111.0

RADIO AIDS TO NAVIGATION: NOTAM FILE DCU.

DECATUR (L) VOR/DME 112.8 DCU Chan 75 N34°38.90' W86°56.37' 096° 8.2 NM to fld. 590/1W. HIWAS.
 VOR/DME unmonitored.

ILS 111.9 I-TVN Rwy 18L. Class IE.

ILS 109.3 I-HSV Rwy 18R. Class IIIE.

ILS 108.5 I-ELL Rwy 36L. Class IE.

ILS/DME 109.55 I-JJC Chan 32(Y) Rwy 36R. Class IE. LOC unusable byd 20° left of course.

ASR

MOONTOWN (3M5) 7 E UTC-6(-5DT) N34°44.84' W86°27.66'

ATLANTA

655 B NOTAM FILE ANB

RWY 09-27: 2180X160 (TURF) LIRL 1.0% up W

RWY 09: Tree.

RWY 27: Road. Rgt tfc.

SERVICE: S2 FUEL 100LL LGT ACTIVATE LIRL Rwy 09-27 and rotating bcn—CTAF. Rotating bcn OTS indef. Twy lgts for
 twy turnoff only.

AIRPORT REMARKS: Attended 1600-0000Z†.

AIRPORT MANAGER: 256-852-9781

COMMUNICATIONS: CTAF/UNICOM 122.7

ISBELL FLD (See FORT PAYNE on page 51)

JACK EDWARDS NATIONAL (See GULF SHORES on page 54)

JACKSON MUNI (4R3) 2 S UTC-6(-5DT) N31°28.23' W87°53.75'

NEW ORLEANS

62 B NOTAM FILE ANB

H-6K, 9A, L-22G

RWY 01-19: H5003X80 (ASPH) S-25 MIRL 0.6% up S

IAP

RWY 01: PAPI(P2L)—GA 3.0° TCH 42'. Tree.

RWY 19: PAPI(P2L)—GA 3.0° TCH 39'.

SERVICE: FUEL 100LL LGT MIRL Rwy 01-19 on dusk-dawn. ACTIVATE MIRL Rwy 01-19 and PAPI Rwy 01 and Rwy
 19—CTAF.

AIRPORT REMARKS: Unattended. Fuel 24 hr credit card svc avbl. Rwy 01-19 numerous thermal and paving joint cracks,
 raveling, polishing and flushing of the sfc. Rwy 01-19 slopes uphill to the south.

AIRPORT MANAGER: 251-246-2461

COMMUNICATIONS: CTAF 122.9

HOUSTON CENTER APP/DEP CON 127.65

RADIO AIDS TO NAVIGATION: NOTAM FILE ANB.

MONROEVILLE (L) VORTAC 116.8 MVC Chan 115 N31°27.56' W87°21.15' 268° 27.9 NM to fld. 420/4E.

JASPER

WALKER CO-BEVILL FLD (JFX)(KJFX) 5 NW UTC-6(-5DT) N33°54.12' W87°18.83'

ATLANTA

483 B NOTAM FILE ANB

H-6K, 9A, L-18H

RWY 09-27: H5004X100 (ASPH) S-50 MIRL

IAP

RWY 09: REIL. VASI(V4L)—GA 3.0° TCH 39'. Trees.

RWY 27: REIL. VASI(V4L)—GA 3.0° TCH 45'. Thld dsplcd 190'.

RUNWAY DECLARED DISTANCE INFORMATION

RWY 09: TORA-5001 TODA-5001 ASDA-4800 LDA-4800

RWY 27: TORA-5001 TODA-5001 ASDA-5001 LDA-4800

SERVICE: S4 FUEL 100LL, JET A, A1 LGT ACTIVATE REIL Rwy 09 and
 Rwy 27; VASI Rwy 09 and Rwy 27 and MIRL Rwy 09-27—CTAF.

AIRPORT REMARKS: Attended Mon-Sat 1400-2200Z†. Fuel avbl 24/7 with
 credit card. Deer on and infov rwys.

AIRPORT MANAGER: (205) 648-5518

WEATHER DATA SOURCES: AWOS-3PT 119.225 (205) 295-5539.

COMMUNICATIONS: CTAF/UNICOM 122.7

® BIRMINGHAM APP/DEP CON 127.675

GCO 121.725 (Birmingham CLNC DEL)

RADIO AIDS TO NAVIGATION: NOTAM FILE ANB.

VULCAN (H) VORTAC 114.4 VUZ Chan 91 N33°40.21'

W86°53.99' 302° 24.9 NM to fld. 743/2E. HIWAS.

ILS/DME 108.9 I-JFX Chan 26 Rwy 27. DME unusable byd 15°
 left of course.

