

**SUMMIT** (See MIDDLETOWN on page 49)

**WATERLOO** N38°48.59' W75°12.68' NOTAM FILE MIV.  
 (L) **VOR/DME** 112.6 ATR Chan 73 233° 10.1 NM to Delaware Coastal. 5/9W.  
 DME unusable:  
 179°-293° byd 30 NM blo 2,000'  
**RCO** 122.1R 112.6T (MILLVILLE RADIO)

**WASHINGTON**  
 H-101, L-346, A

**WILMINGTON**

**NEW CASTLE** (ILG)(KILG) P (ANG ARNG) 4 S UTC-5(-4DT) N39°40.72' W75°36.40'  
 80 B LRA Class I, ARFF Index B NOTAM FILE ILG  
**RWY 09-27:** H7275X150 (ASPH-GRVD) S-90, D-140, 2S-175,  
 2D-250 PCN 55 F/A/W/T HIRL  
**RWY 09:** REIL. PAPI(P4L)—GA 3.0° TCH 61'. Trees.  
**RWY 27:** REIL. PAPI(P4L)—GA 3.0° TCH 54'. Trees.  
**RWY 01-19:** H7012X150 (ASPH-GRVD) S-90, D-140, 2S-175,  
 2D-250 PCN 59 F/A/W/T HIRL  
**RWY 01:** MALSR. RVR-T Road.  
**RWY 19:** REIL. PAPI(P4L)—GA 3.0° TCH 55'. RVR-R Trees.  
**RWY 14-32:** H4602X150 (ASPH) S-50, D-60 PCN 45 F/A/X/T MIRL  
**RWY 14:** Trees.  
**RWY 32:** VASI(V4L)—GA 3.0° TCH 28'.

**WASHINGTON**  
 H-101, 121, L-346, A  
 IAP, AD

**LAND AND HOLD—SHORT OPERATIONS**

LDG RWY	HOLD—SHORT POINT	AVBL LDG DIST
RWY 01	09-27	4050
RWY 14	RWY 01-19	4450
RWY 19	14-32	5750
RWY 32	09-27	3600

**RUNWAY DECLARED DISTANCE INFORMATION**

<b>RWY 01:</b> TORA-7012 TODA-7012 ASDA-7012 LDA-7012
<b>RWY 09:</b> TORA-7275 TODA-7275 ASDA-7000 LDA-7000
<b>RWY 14:</b> TORA-4602 TODA-4602 ASDA-4602 LDA-4602
<b>RWY 19:</b> TORA-7012 TODA-7012 ASDA-7012 LDA-7012
<b>RWY 27:</b> TORA-7275 TODA-7275 ASDA-7000 LDA-7000
<b>RWY 32:</b> TORA-4602 TODA-4602 ASDA-4602 LDA-4602

**ARRESTING GEAR/SYSTEM**

**RWY 19:** EMAS

**SERVICE:** S4 FUEL 100LL, JET A OX 1, 2, 3, 4 LGT When twr clsd ACTIVATE MALSR Rwy 01; REIL Rwy 09, Rwy 19 and Rwy 27; HIRL Rwy 01-19 and Rwy 09-27; MIRL Rwy 14-32—CTAF.

**AIRPORT REMARKS:** Attended continuously. Birds on and invof arpt. Rwy 09-27 no touch and go ldg for turbo jet 0400-1200Z±. When twr clsd, pilots must announce intentions over CTAF before ldg, tkf or gnd travel on rwy's and twys. When twr clsd announce emergencies on CTAF directly to ARFF station. Rwy 14-32 clsd to air carrier ops. Terminal apron clsd exc air carrier. Private gnd vehicles cross Twy A between Twy A4 and Twy C. Taxilane G northwest of Twy H ltd to acft with wingspan of 79' or less. Taxilane G section between Twy H and Twy G1 ltd to acft with wingspan of 49' or less. Terminal apron fence line 118 ft E of Twy A centerline. Rwy 14-32 NSTD mil assault ldg zone (ALZ) lgtg. Ldg fee for all acft over 7,500 lbs exc federal government and Mil.

**AIRPORT MANAGER:** (302) 229-6315

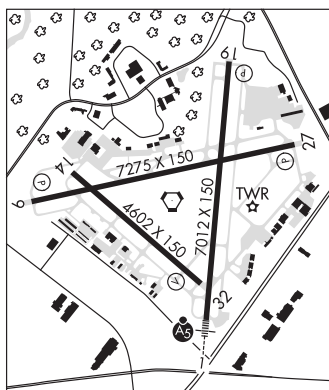
**WEATHER DATA SOURCES:** ASOS (302) 328-1536

**COMMUNICATIONS:** CTAF 126.0 ATIS 123.95 UNICOM 122.95

DUPONT RCO: 122.1R 114.0T (MILLVILLE RADIO)

Ⓜ PHILADELPHIA APP/DEP CON 118.35

WILMINGTON TOWER 126.0 (1130-0400Z±) GND CON 121.7 CLNC DEL 119.95 (TF 800-354-9884)



**CONTINUED ON NEXT PAGE**

## CONTINUED FROM PRECEDING PAGE

AIRSPACE: CLASS D svc 1130-0400Z± other times CLASS E.

RADIO AIDS TO NAVIGATION: NOTAM FILE MIV.

DUPONT (L) VORTAC 114.0 DQO Chan 87 N39°40.69' W75°36.43' at fld. 70/10W.

TACAN AZIMUTH & DME unusable:

040°-100° byd 25 NM blo 5,000'

210°-235° byd 30 NM blo 3,000'

235°-265° byd 22 NM

265°-275° byd 30 NM blo 5,000'

310°-320° byd 35 NM blo 4,000'

VOR unusable:

025°-039° byd 25 NM

025°-039° byd 5 NM blo 10,000'

040°-120° byd 25 NM blo 4,000'

125°-225° blo 10,000'

225°-230° byd 15 NM blo 3,000'

230°-265° byd 22 NM

265°-275° byd 30 NM blo 8,000'

300°-315° byd 35 NM blo 3,000'

355°-005° blo 3,000'

355°-005° byd 15 NM blo 4,000'

355°-005° byd 25 NM

HADIN NDB (LOMW) 248 IL N39°34.88' W75°36.84' 013° 5.9 NM to fld. 21/10W. NOTAM FILE ILG.

ILS 110.3 I-ILG Rwy 01. Class IA. LOM HADIN NDB.

COMM/NAV/WEATHER REMARKS: For Clnc Del when ATCT is clsd ctc PHL Apch at (800) 354-9884.

## WYOMING

JENKINS (15N) 1 W UTC-5(-4DT) N39°07.04' W75°35.07'

WASHINGTON

53 B NOTAM FILE MIV

RWY 18-36: 2842X70 (TURF) LIRL

RWY 18: TRCV(TRIL). Trees.

RWY 36: TRCV(TRIL). Thld dspcd 225'. Road.

RWY 12-30: 2035X70 (TURF) 0.4% up SE

RWY 12: Trees.

RWY 30: Trees.

SERVICE: S4 LGT ACTIVATE LIRL Rwy18-36 and rotating bcn—122.7.

AIRPORT REMARKS: Attended continuously. Rwy 18 TRCV calibration unconfirmed. Rwy 36 TRCV calibration unconfirmed.

AIRPORT MANAGER: 302-697-7743

COMMUNICATIONS: CTAF/UNICOM 122.8