

**DETROIT METROPOLITAN WAYNE CO** (DTW)(KDTW) 15 S UTC-5(-4DT) N42°12.75'

**DETROIT**

W83°21.20'

**COPTER**

645 B TPA—1645(1000) AOE Class I, ARFF Index E NOTAM FILE DTW

**H-10G, L-28J, A**

**RWY 04R-22L:** H12003X200 (CONC-GRVD) S-100, D-185, 2S-175,

**IAP, AD**

2D-350 PCN 126R/B/W/T HIRL CL

**RWY 04R:** ALSF2. TDZL. RVR-TMR Thld dsplcd 509'. Tree.

**RWY 22L:** MALSR. RVR-TMR Railroad.

**RWY 03R-21L:** H10001X150 (CONC-GRVD) S-100, D-200, 2S-175,

2D-350, 2D/2D2-750 PCN 91 R/B/W/T HIRL CL

**RWY 03R:** ALSF2. TDZL. PAPI(P4R)—GA 3.0° TCH 70'. RVR-TMR

**RWY 21L:** MALSR. PAPI(P4L)—GA 3.0° TCH 80'. RVR-TMR Berm.

**RWY 04L-22R:** H10000X150 (CONC-GRVD) S-100, D-200, 2S-175,

2D-350, 2D/2D2-750 PCN 126R/B/W/T HIRL CL

**RWY 04L:** ALSF2. TDZL. PAPI(P4L)—GA 3.0° TCH 71'. RVR-TMR

Tree.

**RWY 22R:** MALSR. TDZL. PAPI(P4R)—GA 3.0° TCH 71'. RVR-TMR

Road.

**RWY 09L-27R:** H8708X150 (CONC-GRVD) S-100, D-185, 2S-175,

2D-350 PCN 73 R/A/W/T HIRL

**RWY 09L:** REIL. RVR-R Antenna.

**RWY 27R:** MALSR. PAPI(P4L)—GA 3.0° TCH 61'. RVR-T Berm.

**RWY 03L-21R:** H8501X200 (ASPH-CONC-GRVD) S-100, D-185,

2S-175, 2D-350 PCN 77 R/A/W/T HIRL CL

**RWY 03L:** REIL. PAPI(P4R)—GA 3.0° TCH 58'. RVR-TR Pole.

**RWY 21R:** REIL. PAPI(P4L)—GA 3.0° TCH 56'. RVR-TR Pole.

**RWY 09R-27L:** H8500X150 (CONC-GRVD) S-100, D-185, 2S-175, 2D-350 PCN 78 R/A/W/T HIRL CL

**RWY 09R:** REIL. RVR-R

**RWY 27L:** MALSR. PAPI(P4L)—GA 3.0° TCH 67'. RVR-T

**RUNWAY DECLARED DISTANCE INFORMATION**

**RWY 03L:**TORA-8501 TODA-8501 ASDA-8501 LDA-8501

**RWY 03R:**TORA-10001 TODA-10001 ASDA-10001 LDA-10001

**RWY 04L:**TORA-10000 TODA-10000 ASDA-10000 LDA-10000

**RWY 04R:**TORA-12003 TODA-12003 ASDA-12003 LDA-11494

**RWY 09L:**TORA-8708 TODA-8708 ASDA-8618 LDA-8618

**RWY 09R:**TORA-8500 TODA-8500 ASDA-8500 LDA-8500

**RWY 21L:**TORA-10001 TODA-10001 ASDA-10001 LDA-10001

**RWY 21R:**TORA-8501 TODA-8501 ASDA-8501 LDA-8501

**RWY 22L:**TORA-12003 TODA-12003 ASDA-12003 LDA-12003

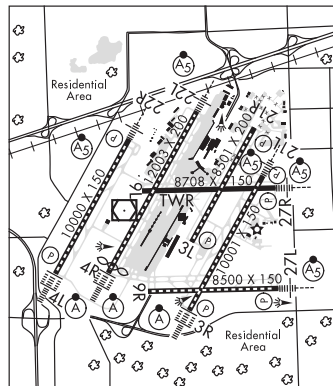
**RWY 22R:**TORA-10000 TODA-10000 ASDA-10000 LDA-10000

**RWY 27L:**TORA-8500 TODA-8500 ASDA-8500 LDA-8500

**RWY 27R:**TORA-8708 TODA-8708 ASDA-8708 LDA-8708

**SERVICE:** FUEL 100LL, JET A **LGT** Rwy 03L PAPI unusable 8° left/right course. Rwy 03R PAPI unusable byd 8° left of course

**AIRPORT REMARKS:** Attended continuously. Be alert birds, waterfowl on and in/ovf arpt. Rwy status lgts are in opn. Rwy visual screen 20' AGL 1150' south AER 04R. Rwy 21R departures be alert for optical illusion, acft taxiing on Twy T may appear as though crossing Rwy 21R centerline. Rwy 22L departures be alert for optical illusion, acft taxiing on Twy Q may appear as though crossing Rwy 22L centerline. Brightly lgtd parking lot 2.6 NM southwest of arpt. Rwy 03L-21R south 3500' grvd asph, north 6500' asph overlaid conc with conc keel section. ASDE-X in use. Operate transponders with altitude reporting mode and ADS-B (if equipped) enabled on all airport surfaces. Rwy 03R ALSF2 req when RVR/visibility is 6000/1 mile or less. SSALR ops when RVR/visibility is 6000/1 mile. PPR for B747-8 ops due to constraints on runws, twys and ramps ctc airfield ops at 734-942-3685. Acft on Twy F and Twy V do not block fire station exits. Turning restriction Twy B to Twy K, restricted to aircraft with wingspan 171' or less. Aircraft with wingspan greater than 171' cannot use Twy G north of Twy V except for aircraft under tow to RON Spot 2H. Aircraft with wingspan greater than 171' are restricted from using Twy PP. Aircraft with wingspan greater than 171' are restricted from using Twy H between K and H2. Aircraft with wingspan greater than 171' are restricted from using Twy M northbound to Twy V westbound. Aircraft with wingspan greater than 171' cannot pass each other on Twy Y and Twy K between Twy U and Twy K6, insufficient wingtip clearance. Twy G north of Twy H is a non-movement area. Aircraft with wingspan greater than 135' are restricted from using Twy G between 27R and Twy V. Aircraft with wingspan greater than 118' are restricted from using Twy H between Twy H2 and Twy G. Unidirectional stopbars on Rwy 27R when being used for taxi between Rwsy 03L and 04R. Ldg fee. Diversionair carriers without a presence at DTW should ctc airfield oprs 734-942-3685 prior to diverting to the extent practical and provide company, fit oprs, ctc info, aircraft type, persons onboard, international or domestic, any grnd handler agreements in place. Flight Notification Service (ADCUS) available. NOTE: See Special Notices—Line Up and Wait (LUAW) Intersection Departures Not Visible from Tower, Continuous Power Facilities



CONTINUED ON NEXT PAGE

## CONTINUED FROM PRECEDING PAGE

AIRPORT MANAGER: 734-942-3550

WEATHER DATA SOURCES: ASOS 133.675 (734) 955-5015. LLWAS. TDWR.

COMMUNICATIONS: D-ATIS 133.675 UNICOM 122.95

CARLETON RCO 122.1R 115.7T (LANSING RADIO)

® APP CON 125.15 (EAST) 124.05 (WEST) 124.975

® DEP CON 132.05 (TURBOJETS-EAST) 134.3 (TURBOPROPS-EAST) 125.525 (TURBOJETS-WEST) 118.95 (TURBOPROP-WEST)

METRO TOWER 118.4 (EAST) (Rwy 03R, Rwy 09R, Rwy 21L, Rwy 27R) 128.125 (Rwy 04R-22L) 128.75 (Rwy 03L, Rwy 21R, Rwy 27L) 135.0 (WEST) (Rwy 04L, Rwy 09L, Rwy 22R)

GND CON 121.8 (NORTHWEST) 132.725 (SOUTHWEST) 119.25 (SOUTHEAST) 119.45 (NORTHEAST)

CLNC DEL 120.65

CPDLC (LOGON KUSA)

PRE TAXI CLNC 120.65

AIRSPACE: CLASS B See VFR Terminal Area Chart

VOR TEST FACILITY (VOT) 109.8

RADIO AIDS TO NAVIGATION: NOTAM FILE DTW.

(H) VOR/DME 113.4 DXO Chan 81 N42°12.79' W83°22.00' at fld. 638/6W.

DME unusable:

Byd 30 NM blo 2,900'

CARLETON (H) VOR/DME 115.7 CRL Chan 104 N42°02.88' W83°27.46' 028° 10.9 NM to fld. 629/3W. NOTAM FILE LAN. HIWAS.

VOR unusable:

000°-019° blo 5,000'

020°-030° byd 13 NM blo 5,000'

031°-040° blo 5,000'

041°-050° byd 25 NM blo 8,000'

255°-335° byd 30 NM blo 8,000'

ILS/DME 111.5 I-HUU Chan 52 Rwy 03R.

ILS/DME 111.95 I-HJT Chan 56(Y) Rwy 04L. Class IIIE. DME also serves Rwy 22R.

ILS/DME 110.7 I-DTW Chan 44 Rwy 04R. Class IIIE.

ILS/DME 111.75 I-ALA Chan 54(Y) Rwy 04X. Class IC. ILS id: (ala) ILS/DME associated with Rwy 04L.

ILS/DME 111.5 I-EJR Chan 52 Rwy 21L. OM unmonitored.

ILS/DME 110.7 I-DWC Chan 44 Rwy 22L. Class IIT. ILS OM unmonitored. LOC unusable inside rwy thld. DME unusable byd 030° right of course

ILS/DME 111.95 I-JKI Chan 56(Y) Rwy 22R. Class IE. DME also serves Rwy 04R.

ILS/DME 111.75 I-BZB Chan 54(Y) Rwy 22X. ILS id: (bzb) ILS/DME associated with Rwy 22R.

ILS/DME 110.15 I-EPA Chan 38(Y) Rwy 27L. Class IIE.

ILS/DME 108.5 I-DMI Chan 22 Rwy 27R. Class IE.

COMM/NAV/WEATHER REMARKS: Dual VHF communications required for Simultaneous Close Parallel ILS PRM Approaches.